



[Go to Product page](#)

Datasheet for ABIN6145273
anti-PBXIP1 antibody (AA 1-190)

1 Image

Overview

Quantity:	100 µL
Target:	PBXIP1
Binding Specificity:	AA 1-190
Reactivity:	Human
Host:	Rabbit
Clonality:	Polyclonal
Conjugate:	This PBXIP1 antibody is un-conjugated
Application:	Western Blotting (WB), Immunohistochemistry (IHC)

Product Details

Immunogen:	Recombinant fusion protein containing a sequence corresponding to amino acids 1-190 of human PBXIP1 (NP_065385.2).
Sequence:	MASCPDSDNS WVLAGESESLP VETLGPASRM DPESERALQA PHSPSKTDGK ELAGTMDGEG TLFQTESPQS GSILTEETEV KGTLEGDVCG VEPPGPGDTV VQGDLETTV VTGLGPDQTQD LEGQSPQSL PSTPKAAWIR EEGRCSSDD DTDVDMEGLR RRRGREAGPP QPMVPLAVEN QAGGEGAGGE
Isotype:	IgG
Cross-Reactivity:	Human, Mouse, Rat
Characteristics:	Polyclonal Antibodies

Target Details

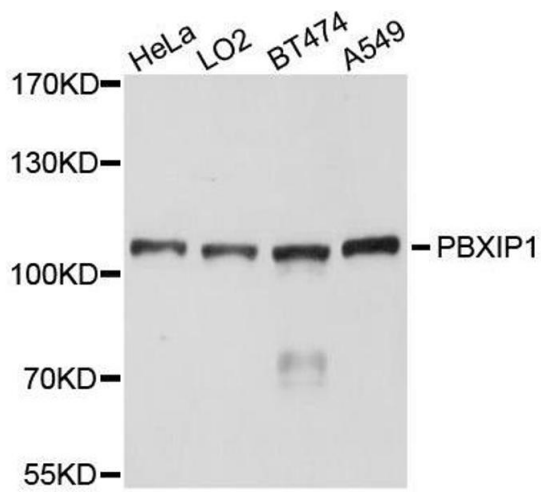
Target:	PBXIP1
Alternative Name:	PBXIP1 (PBXIP1 Products)
Background:	<p>The protein encoded by this gene interacts with the PBX1 homeodomain protein, inhibiting its transcriptional activation potential by preventing its binding to DNA. The encoded protein, which is primarily cytosolic but can shuttle to the nucleus, also can interact with estrogen receptors alpha and beta and promote the proliferation of breast cancer, brain tumors, and lung cancer. Several transcript variants encoding different isoforms have been found for this gene. More variants exist, but their full-length natures have yet to be determined.,PBXIP1,HPiP,Epigenetics & Nuclear Signaling,Nuclear Receptor Signaling,Nuclear hormone receptors,Signal Transduction,PBXIP1</p>
Molecular Weight:	72 kDa/77 kDa/80 kDa
Gene ID:	57326
UniProt:	Q96AQ6

Application Details

Application Notes:	WB,1:1000 - 1:2000,IHC,1:50 - 1:200
Comment:	HIGH QUALITY
Restrictions:	For Research Use only

Handling

Format:	Liquid
Buffer:	PBS with 0.02 % sodium azide,50 % glycerol, pH 7.3.
Preservative:	Sodium azide
Precaution of Use:	This product contains Sodium azide: a POISONOUS AND HAZARDOUS SUBSTANCE which should be handled by trained staff only.
Storage:	-20 °C
Storage Comment:	Store at -20°C. Avoid freeze / thaw cycles.



Western Blotting

Image 1. Western blot analysis of extracts of various cell lines, using PBXIP1 antibody.