



Datasheet for ABIN6145275
anti-PCBD1 antibody (AA 1-104)



[Go to Product page](#)

2 Images

Overview

Quantity:	100 µL
Target:	PCBD1
Binding Specificity:	AA 1-104
Reactivity:	Human
Host:	Rabbit
Clonality:	Polyclonal
Conjugate:	This PCBD1 antibody is un-conjugated
Application:	Western Blotting (WB), Immunofluorescence (IF)

Product Details

Immunogen:	Recombinant fusion protein containing a sequence corresponding to amino acids 1-104 of human PCBD1 (NP_000272.1).
Sequence:	MAGKAHRLSA EERDQLLPNL RAVGWNELEG RDAIFKQFHF KDFNRAFGFM TRVALQAEKL DHHPEWFNVY NKVHITLSTH ECAGLSERDI NLASFIEQVA VSMT
Isotype:	IgG
Cross-Reactivity:	Human, Mouse, Rat
Characteristics:	Polyclonal Antibodies

Target Details

Target:	PCBD1
---------	-------

Target Details

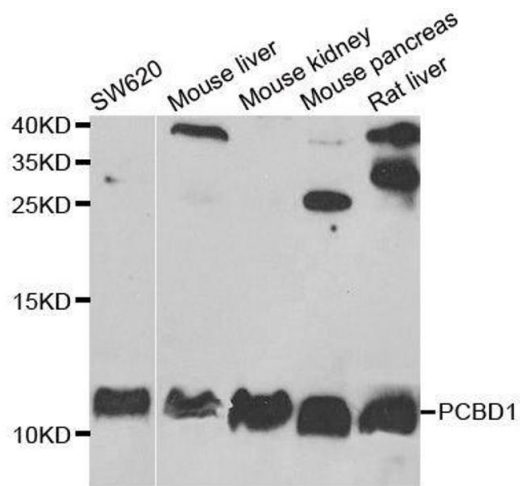
Alternative Name:	PCBD1 (PCBD1 Products)
Background:	This gene encodes a member of the pterin-4-alpha-carbinolamine dehydratase family. The encoded protein has been identified as a moonlighting protein based on its ability to perform mechanistically distinct functions. The encoded protein functions as both a dehydratase involved in tetrahydrobiopterin biosynthesis, and as a cofactor for HNF1A-dependent transcription. A deficiency of this enzyme leads to hyperphenylalaninemia. Alternative splicing results in multiple transcript variants.,PCBD1,DCOH,PCBD,PCD,PHS,Epigenetics & Nuclear Signaling,Cancer,Signal Transduction,Endocrine & Metabolism,Amino acid metabolism,PCBD1
Molecular Weight:	12 kDa
Gene ID:	5092
UniProt:	P61457

Application Details

Application Notes:	WB,1:500 - 1:2000,IF,1:10 - 1:100
Comment:	HIGH QUALITY
Restrictions:	For Research Use only

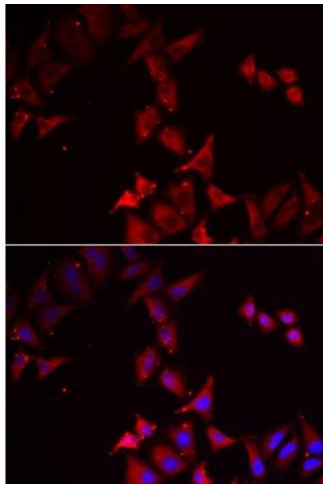
Handling

Format:	Liquid
Buffer:	PBS with 0.02 % sodium azide,50 % glycerol, pH 7.3.
Preservative:	Sodium azide
Precaution of Use:	This product contains Sodium azide: a POISONOUS AND HAZARDOUS SUBSTANCE which should be handled by trained staff only.
Storage:	-20 °C
Storage Comment:	Store at -20°C. Avoid freeze / thaw cycles.



Western Blotting

Image 1. Western blot analysis of extracts of various cell lines, using PCBD1 antibody.



Immunofluorescence

Image 2. Immunofluorescence analysis of MCF7 cells using PCBD1 antibody.