



[Go to Product page](#)

Datasheet for ABIN6145289  
**anti-PCDH15 antibody (AA 160-400)**

1 Image

Overview

Quantity:	100 µL
Target:	PCDH15
Binding Specificity:	AA 160-400
Reactivity:	Human
Host:	Rabbit
Clonality:	Polyclonal
Conjugate:	This PCDH15 antibody is un-conjugated
Application:	Western Blotting (WB), Immunohistochemistry (IHC)

Product Details

Immunogen:	Recombinant fusion protein containing a sequence corresponding to amino acids 160-400 of human PCDH15 (NP_001136235.1).
Sequence:	TVNELTPVGT TIFTGFSGDN GATDIDDGPN GQIEYVIQYN PDDPTSNDTF EIPLMLTGNI VLRKRLNYED KTRYFVIIQA NDRAQNLNER RTTTTTLTVD VLDGDDLGPMLPFCVLPNT RDCRPLTYQA AIPELRTPPEE LNPIIVTPPI QAIDQDRNIQ PPSDRPGILY SILVGTPEDY PRFFHMHPRRT AELSLLPEVN RDFHQKFDLV IKAEQDNGHP LPAFAGLHIE ILDENNQSPY F
Isotype:	IgG
Cross-Reactivity:	Human, Mouse, Rat
Characteristics:	Polyclonal Antibodies

## Target Details

---

Target:	PCDH15
Alternative Name:	PCDH15 ( <a href="#">PCDH15 Products</a> )
Background:	<p>This gene is a member of the cadherin superfamily. Family members encode integral membrane proteins that mediate calcium-dependent cell-cell adhesion. It plays an essential role in maintenance of normal retinal and cochlear function. Mutations in this gene result in hearing loss and Usher Syndrome Type IF (USH1F). Extensive alternative splicing resulting in multiple isoforms has been observed in the mouse ortholog. Similar alternatively spliced transcripts are inferred to occur in human, and additional variants are likely to occur.,PCDH15,CDHR15,DFNB23,USH1F,PCDH15</p>
Molecular Weight:	92 kDa/106 kDa/185 kDa/197 kDa/216 kDa
Gene ID:	65217
UniProt:	<a href="#">Q96QU1</a>
Pathways:	<a href="#">Sensory Perception of Sound</a>

## Application Details

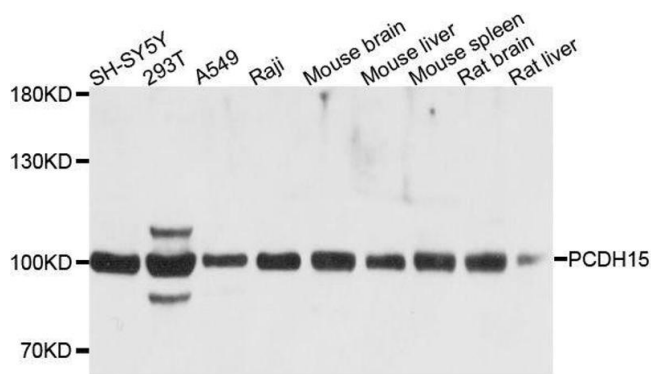
---

Application Notes:	WB,1:500 - 1:2000,IHC,1:100 - 1:200
Comment:	HIGH QUALITY
Restrictions:	For Research Use only

## Handling

---

Format:	Liquid
Buffer:	PBS with 0.02 % sodium azide,50 % glycerol, pH 7.3.
Preservative:	Sodium azide
Precaution of Use:	This product contains Sodium azide: a POISONOUS AND HAZARDOUS SUBSTANCE which should be handled by trained staff only.
Storage:	-20 °C
Storage Comment:	Store at -20°C. Avoid freeze / thaw cycles.



### Western Blotting

**Image 1.** Western blot analysis of extracts of various cell lines, using PCDH15 antibody.