

Datasheet for ABIN6145301
anti-PCDHA6 antibody (AA 1-230)[Go to Product page](#)

2 Images

Overview

Quantity:	100 µL
Target:	PCDHA6
Binding Specificity:	AA 1-230
Reactivity:	Human
Host:	Rabbit
Clonality:	Polyclonal
Conjugate:	This PCDHA6 antibody is un-conjugated
Application:	Western Blotting (WB), Immunofluorescence (IF)

Product Details

Immunogen:	Recombinant fusion protein containing a sequence corresponding to amino acids 1-230 of human PCDHA6 (NP_061732.1).
Sequence:	MVFTPEDRLG KQCLLLPLLL LAAWKVGSGQ LHYSVPPEAK HGTFVGRIAQ DLGLELAELV PRLFRMASKD REDLLEVNQ NGILFVNSRI DREELCGRSA ECSIHLEVIV DRPLQVFHVD VEVRDINDNP PLFPVEEQRV LIYESRLPDS VFPLEGASDA DVGSNSILTY KLSSEYFGL DVKINSDDNK QIGLLKKSL DREEAPAHNL FLTATDGGKP ELTGTVQLLV
Isotype:	IgG
Cross-Reactivity:	Human, Mouse, Rat
Characteristics:	Polyclonal Antibodies

Target Details

Target:	PCDHA6
Alternative Name:	PCDHA6 (PCDHA6 Products)
Background:	<p>This gene is a member of the protocadherin alpha gene cluster, one of three related gene clusters tandemly linked on chromosome five that demonstrate an unusual genomic organization similar to that of B-cell and T-cell receptor gene clusters. The alpha gene cluster is composed of 15 cadherin superfamily genes related to the mouse CNR genes and consists of 13 highly similar and 2 more distantly related coding sequences. The tandem array of 15 N-terminal exons, or variable exons, are followed by downstream C-terminal exons, or constant exons, which are shared by all genes in the cluster. The large, uninterrupted N-terminal exons each encode six cadherin ectodomains while the C-terminal exons encode the cytoplasmic domain. These neural cadherin-like cell adhesion proteins are integral plasma membrane proteins that most likely play a critical role in the establishment and function of specific cell-cell connections in the brain. Alternative splicing has been observed and additional variants have been suggested but their full-length nature has yet to be determined.,PCDHA6,CNR2,CNRN2,CNRS2,CRNR2,PCDH-ALPHA6,Signal Transduction,Cell Biology & Developmental Biology,Cell Cycle,Centrosome,Cell Adhesion,Cadherins,Cytoskeleton,Neuroscience,PCDHA6</p>
Molecular Weight:	75 kDa/86 kDa/102 kDa
Gene ID:	56142
UniProt:	Q9UN73

Application Details

Application Notes:	WB,1:500 - 1:2000,IF,1:50 - 1:200
Restrictions:	For Research Use only

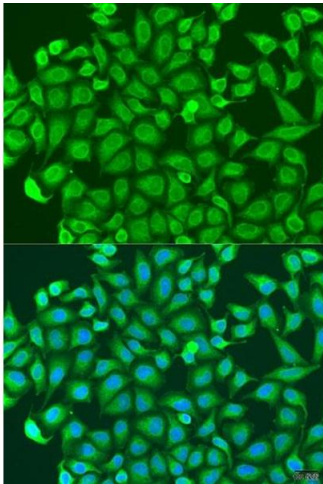
Handling

Format:	Liquid
Buffer:	PBS with 0.02 % sodium azide,50 % glycerol, pH 7.3.
Preservative:	Sodium azide
Precaution of Use:	This product contains Sodium azide: a POISONOUS AND HAZARDOUS SUBSTANCE which should be handled by trained staff only.

Handling

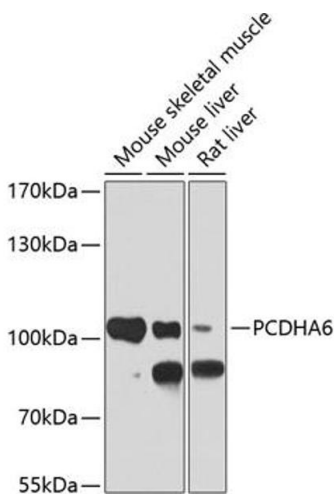
Storage:	-20 °C
Storage Comment:	Store at -20°C. Avoid freeze / thaw cycles.

Images



Immunofluorescence

Image 1. Immunofluorescence analysis of U2OS cells using PCDH antibody (ABIN6128584, ABIN6145301, ABIN6145302 and ABIN6220787) at dilution of 1:100. Blue: DAPI for nuclear staining.



Western Blotting

Image 2. Western blot analysis of extracts of various cell lines, using PCDH antibody (ABIN6128584, ABIN6145301, ABIN6145302 and ABIN6220787) at 1:1000 dilution. Secondary antibody: HRP Goat Anti-Rabbit IgG (H+L) (ABIN1684268 and ABIN3020597) at 1:10000 dilution. Lysates/proteins: 25 µg per lane. Blocking buffer: 3 % nonfat dry milk in TBST. Detection: ECL Basic Kit (RM00020). Exposure time: 30s.