



[Go to Product page](#)

Datasheet for ABIN6145311
anti-PCGF6 antibody (AA 161-350)

1 Image

Overview

Quantity:	100 µL
Target:	PCGF6
Binding Specificity:	AA 161-350
Reactivity:	Human
Host:	Rabbit
Clonality:	Polyclonal
Conjugate:	This PCGF6 antibody is un-conjugated
Application:	Western Blotting (WB)

Product Details

Immunogen:	Recombinant fusion protein containing a sequence corresponding to amino acids 161-350 of human PCGF6 (NP_001011663.1).
Sequence:	RHFYYSNRCP KCNIVVHQTQ PLYNIRLDRQ LQDIVYKLVI NLEEREKKQM HDFYKERGLE VPKPAVPQPV PSSKGRSCKV LESVFRIPPE LDMSLLLEFI GANEGTGHFK PLEKKFVRVS GEATIGHVEK FLRRKMGLDP ACQVDICGD HLLQYQTLR EIRRAIGDAA MQDGLLLVHY GLVVSPLKIT
Isotype:	IgG
Cross-Reactivity:	Human, Mouse, Rat
Characteristics:	Polyclonal Antibodies

Target Details

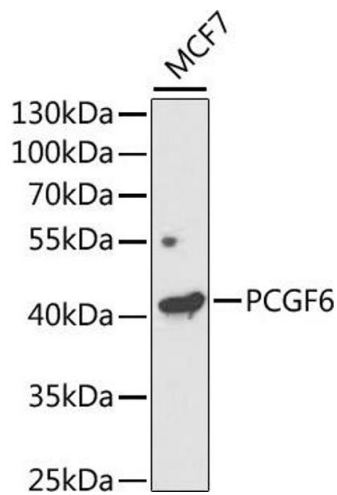
Target:	PCGF6
Alternative Name:	PCGF6 (PCGF6 Products)
Background:	<p>The protein encoded by this gene contains a RING finger motif, which is most closely related to those of polycomb group (PcG) proteins RNF110/MEL-18 and BMI1. PcG proteins are known to form protein complexes and function as transcription repressors. This protein has been shown to interact with some PcG proteins and act as a transcription repressor. The activity of this protein is found to be regulated by cell cycle dependent phosphorylation. Alternatively spliced transcript variants encoding different isoforms have been identified.,PCGF6,MBLR,RNF134,Epigenetics & Nuclear Signaling,Transcription Factors,Chromatin Remodeling,PCGF6</p>
Molecular Weight:	30 kDa/39 kDa
Gene ID:	84108
UniProt:	Q9BYE7

Application Details

Application Notes:	WB,1:500 - 1:2000
Comment:	HIGH QUALITY
Restrictions:	For Research Use only

Handling

Format:	Liquid
Buffer:	PBS with 0.02 % sodium azide,50 % glycerol, pH 7.3.
Preservative:	Sodium azide
Precaution of Use:	This product contains Sodium azide: a POISONOUS AND HAZARDOUS SUBSTANCE which should be handled by trained staff only.
Storage:	-20 °C
Storage Comment:	Store at -20°C. Avoid freeze / thaw cycles.



Western Blotting

Image 1. Western blot analysis of extracts of MCF7 cells, using PCGF6 antibody (ABIN6131076, ABIN6145311, ABIN6145312 and ABIN6221435) at 1:1000 dilution. Secondary antibody: HRP Goat Anti-Rabbit IgG (H+L) (ABIN1684268 and ABIN3020597) at 1:10000 dilution. Lysates/proteins: 25 µg per lane. Blocking buffer: 3 % nonfat dry milk in TBST. Detection: ECL Enhanced Kit (RM00021). Exposure time: 120s.