

Datasheet for ABIN6145315
anti-PCM1 antibody (AA 1-260)



[Go to Product page](#)

5 Images

Overview

Quantity:	100 µL
Target:	PCM1
Binding Specificity:	AA 1-260
Reactivity:	Human
Host:	Rabbit
Clonality:	Polyclonal
Conjugate:	This PCM1 antibody is un-conjugated
Application:	Western Blotting (WB), Immunohistochemistry (IHC), Immunofluorescence (IF)

Product Details

Immunogen:	Recombinant fusion protein containing a sequence corresponding to amino acids 1-260 of human PCM1 (NP_006188.3).
Sequence:	MATGGGPFED GMNDQQLPNW SNENVDDRLN NMDWGAQQKK ANRSSEKNKK KFGVESDKRV TNDISPESSP GVGRRTKTP HTFPHSRYS QMSVPEQAE EKLKQRINFS DLDQRSIGSD SQGRATAANN KRQLSENKRP FNFLPMQINT NKS KDASTSP PNRETIGSAQ CKELFASALS NDLLQNCQVS EEDGRGEPAM ESSQIVSRLV QIRDYITKAS SMREDLVEKN ERSANVERLT HLIDHLKEQE KSYMFKLKKI
Isotype:	IgG
Cross-Reactivity:	Human, Mouse
Characteristics:	Polyclonal Antibodies

Target Details

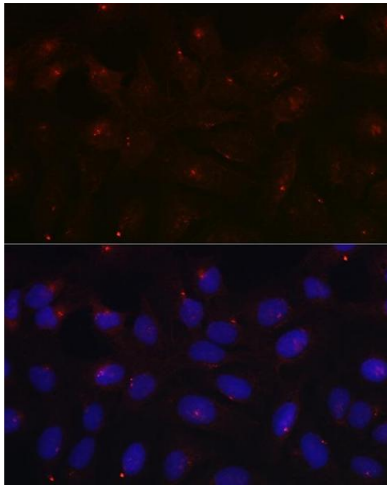
Target:	PCM1
Alternative Name:	PCM1 (PCM1 Products)
Background:	The protein encoded by this gene is a component of centriolar satellites, which are electron dense granules scattered around centrosomes. Inhibition studies show that this protein is essential for the correct localization of several centrosomal proteins, and for anchoring microtubules to the centrosome. Chromosomal aberrations involving this gene are associated with papillary thyroid carcinomas and a variety of hematological malignancies, including atypical chronic myeloid leukemia and T-cell lymphoma. Multiple transcript variants encoding different isoforms have been found for this gene.,PCM1,PTC4,RET/PCM-1,Epigenetics & Nuclear Signaling,Cell Biology & Developmental Biology,Cell Cycle,Centrosome,PCM1
Molecular Weight:	59 kDa/222 kDa/228 kDa
Gene ID:	5108
UniProt:	Q15154
Pathways:	Stem Cell Maintenance , M Phase , Maintenance of Protein Location

Application Details

Application Notes:	WB,1:500 - 1:2000,IHC,1:50 - 1:200,IF,1:50 - 1:200
Comment:	HIGH QUALITY
Restrictions:	For Research Use only

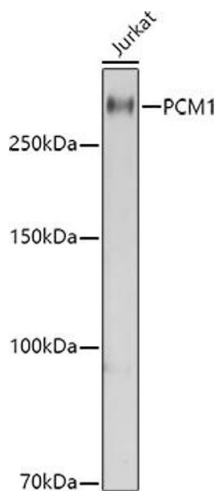
Handling

Format:	Liquid
Buffer:	PBS with 0.02 % sodium azide, pH 7.3.
Preservative:	Sodium azide
Precaution of Use:	This product contains Sodium azide: a POISONOUS AND HAZARDOUS SUBSTANCE which should be handled by trained staff only.
Storage:	4 °C
Storage Comment:	Store at -20°C. Avoid freeze / thaw cycles.



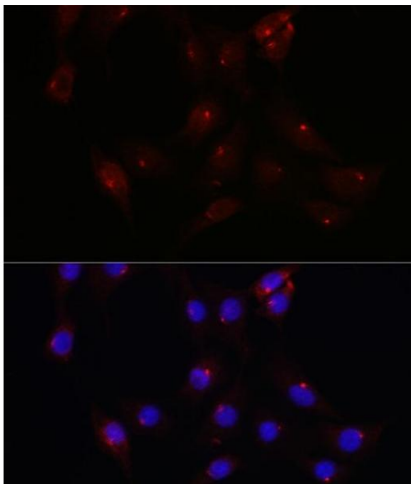
Immunofluorescence

Image 1. Immunofluorescence analysis of U2OS cells using PCM1 Rabbit pAb at dilution of 1:100 (40x lens). Blue: DAPI for nuclear staining.



Western Blotting

Image 2. Western blot analysis of extracts of Jurkat cells, using PCM1 antibody at 1:1000 dilution. Secondary antibody: HRP Goat Anti-Rabbit IgG (H+L) (ABIN1684268 and ABIN3020597) at 1:10000 dilution. Lysates/proteins: 25 µg per lane. Blocking buffer: 3% nonfat dry milk in TBST. Detection: ECL Basic Kit (RM00020). Exposure time: 10s.



Immunofluorescence

Image 3. Immunofluorescence analysis of NIH/3T3 cells using PCM1 Rabbit pAb at dilution of 1:100 (40x lens). Blue: DAPI for nuclear staining.

Please check the [product details page](#) for more images. Overall 5 images are available for ABIN6145315.