

Datasheet for ABIN6145340  
**anti-PDCD6 antibody (AA 1-191)**



[Go to Product page](#)

3 Images

## Overview

Quantity:	100 µL
Target:	PDCD6
Binding Specificity:	AA 1-191
Reactivity:	Human
Host:	Rabbit
Clonality:	Polyclonal
Conjugate:	This PDCD6 antibody is un-conjugated
Application:	Western Blotting (WB), Immunoprecipitation (IP)

## Product Details

Immunogen:	Recombinant fusion protein containing a sequence corresponding to amino acids 1-191 of human PDCD6 (NP_037364.1).
Sequence:	MAAYSYPGP GAGPGAAGA ALPDQSFLWN VFQRVDKDRS GVISDTELQQ ALSNGTWTPF NPVTVRSIIS MFDRENKAGV NFSEFTGVWK YITDWQNVFR TYDRDNSGMI DKNELKQALS GFGYRLSDQF HDILIRKFDR QGRGQIAFDD FIQGCIVLQR LTDIFRRYDT DQDGWIIQVSY EQYLSMVFSI V
Isotype:	IgG
Cross-Reactivity:	Human, Mouse, Rat
Characteristics:	Polyclonal Antibodies

## Target Details

---

Target:	PDCD6
Alternative Name:	PDCD6 ( <a href="#">PDCD6 Products</a> )
Background:	<p>This gene encodes a calcium-binding protein belonging to the penta-EF-hand protein family. Calcium binding is important for homodimerization and for conformational changes required for binding to other protein partners. This gene product participates in T cell receptor-, Fas-, and glucocorticoid-induced programmed cell death. In mice deficient for this gene product, however, apoptosis was not blocked suggesting this gene product is functionally redundant. Alternatively spliced transcript variants encoding multiple isoforms have been observed for this gene, and a pseudogene of this gene is also located on the short arm of chromosome 5.,PDCD6,ALG-2,ALG2,PEF1B,Signal Transduction,Cell Biology &amp; Developmental Biology,Apoptosis,Neuroscience,Calcium Signaling,PDCD6</p>
Molecular Weight:	7 kDa/21 kDa
Gene ID:	10016
UniProt:	<a href="#">O75340</a>
Pathways:	<a href="#">Positive Regulation of Endopeptidase Activity</a>

## Application Details

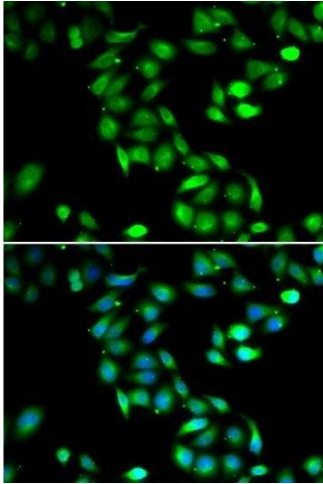
---

Application Notes:	WB,1:500 - 1:2000,IP,1:50 - 1:200
Comment:	HIGH QUALITY
Restrictions:	For Research Use only

## Handling

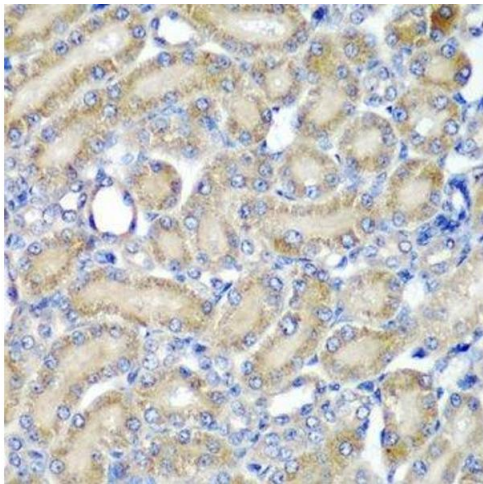
---

Format:	Liquid
Buffer:	PBS with 0.02 % sodium azide,50 % glycerol, pH 7.3.
Preservative:	Sodium azide
Precaution of Use:	This product contains Sodium azide: a POISONOUS AND HAZARDOUS SUBSTANCE which should be handled by trained staff only.
Storage:	-20 °C
Storage Comment:	Store at -20°C. Avoid freeze / thaw cycles.



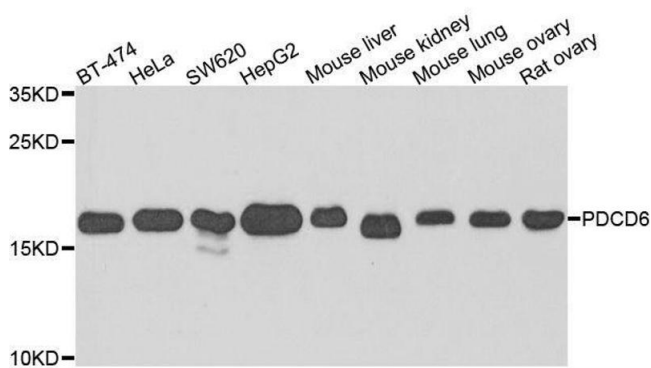
### Immunofluorescence

**Image 1.** Immunofluorescence analysis of HeLa cells using PDCD6 antibody.



### Immunohistochemistry (Paraffin-embedded Sections)

**Image 2.** Immunohistochemistry of paraffin-embedded rat kidney using PDCD6 antibody.



### Western Blotting

**Image 3.** Western blot analysis of extracts of various cell lines, using PDCD6 antibody.