

Datasheet for ABIN6145379
anti-PDHA2 antibody (AA 119-388)



[Go to Product page](#)

4 Images

Overview

| | |
|----------------------|--|
| Quantity: | 100 µL |
| Target: | PDHA2 (PDHa2) |
| Binding Specificity: | AA 119-388 |
| Reactivity: | Human |
| Host: | Rabbit |
| Clonality: | Polyclonal |
| Conjugate: | This PDHA2 antibody is un-conjugated |
| Application: | Western Blotting (WB), Immunofluorescence (IF) |

Product Details

| | |
|-------------------|---|
| Immunogen: | Recombinant fusion protein containing a sequence corresponding to amino acids 119-388 of human PDHA2 (NP_005381.1). |
| Sequence: | HGVCYTRGLS VRSILAELTG RRGCAKGGK GSMHMYTKNF YGGNGIVGAQ GPLGAGIALA CKYKGNDEIC LTLYGDGAAN QGQIAEFNM AALWKLPCVF ICENNLVGMG TSTERAAASP DYYKRGNFIP GLKVDGMDVL CVREATKFAA NYCRSGKGPI LMELQTYRYH GHMSDPGVS YRTREEIQEV RSKRDPIIL QDRMVNSKLA TVEELKEIGA EVRKEIDDA QFATTDPEPH LEELGHHIYS SDSSFVIRGA NPWIKFKSVS |
| Isotype: | IgG |
| Cross-Reactivity: | Human, Mouse, Rat |
| Characteristics: | Polyclonal Antibodies |

Target Details

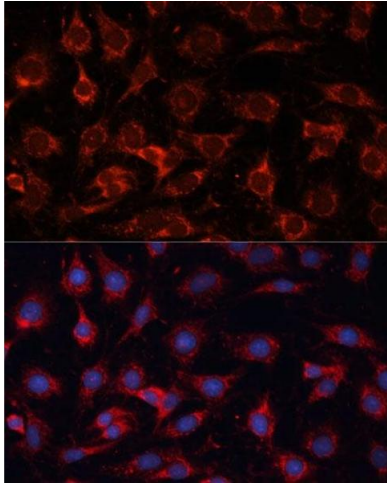
| | |
|-------------------|---|
| Target: | PDHA2 (PDHa2) |
| Alternative Name: | PDHA2 (PDHa2 Products) |
| Background: | The pyruvate dehydrogenase complex catalyzes the overall conversion of pyruvate to acetyl-CoA and CO ₂ , and thereby links the glycolytic pathway to the tricarboxylic cycle.,PDHA2,PDHAL,Cancer,Signal Transduction,Endocrine & Metabolism,Warburg Effect,PDHA2 |
| Molecular Weight: | 42 kDa |
| Gene ID: | 5161 |
| UniProt: | P29803 |
| Pathways: | Warburg Effect |

Application Details

| | |
|--------------------|-----------------------------------|
| Application Notes: | WB,1:500 - 1:2000,IF,1:50 - 1:200 |
| Comment: | HIGH QUALITY |
| Restrictions: | For Research Use only |

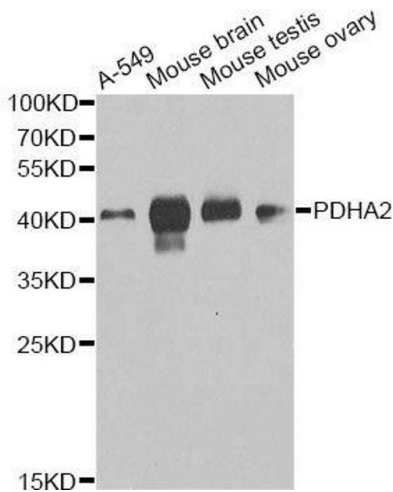
Handling

| | |
|--------------------|--|
| Format: | Liquid |
| Buffer: | PBS with 0.02 % sodium azide,50 % glycerol, pH 7.3. |
| Preservative: | Sodium azide |
| Precaution of Use: | This product contains Sodium azide: a POISONOUS AND HAZARDOUS SUBSTANCE which should be handled by trained staff only. |
| Storage: | -20 °C |
| Storage Comment: | Store at -20°C. Avoid freeze / thaw cycles. |



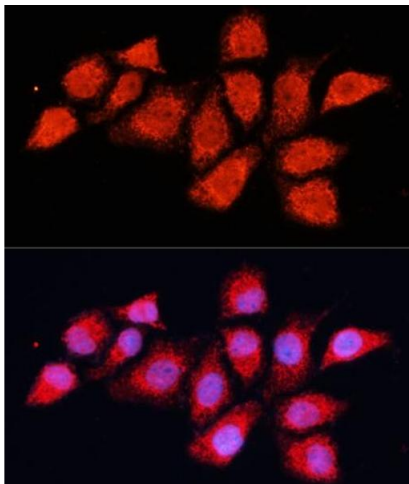
Immunofluorescence

Image 1. Immunofluorescence analysis of C6 cells using PDH Polyclonal Antibody (ABIN6132882, ABIN6145379, ABIN6145381 and ABIN6225274) at dilution of 1:100 (40x lens). Blue: DAPI for nuclear staining.



Western Blotting

Image 2. Western blot analysis of extracts of various cell lines, using PDHA2 antibody.



Immunofluorescence

Image 3. Immunofluorescence analysis of HeLa cells using PDH Polyclonal Antibody (ABIN6132882, ABIN6145379, ABIN6145381 and ABIN6225274) at dilution of 1:100 (40x lens). Blue: DAPI for nuclear staining.

Please check the [product details page](#) for more images. Overall 4 images are available for ABIN6145379.