

Datasheet for ABIN6145398  
**anti-PDLIM1 antibody (AA 1-329)**



[Go to Product page](#)

2 Images

## Overview

Quantity:	100 µL
Target:	PDLIM1
Binding Specificity:	AA 1-329
Reactivity:	Human
Host:	Rabbit
Clonality:	Polyclonal
Conjugate:	This PDLIM1 antibody is un-conjugated
Application:	Western Blotting (WB), Immunofluorescence (IF)

## Product Details

Immunogen:	Recombinant fusion protein containing a sequence corresponding to amino acids 1-329 of human PDLIM1/CLP36 (NP_066272.1).
Sequence:	MTTQQIDLQG PGPWGFRLVG GKDFEQPLAI SRVTPGSKAA LANLCIGDVI TAIDGENTSN MTHLEAQNRI KGCTDNLTLT VARSEHKVWS PLVTEEGKRH PYKMNLASEP QEVLHIGSAH NRSAMPFTAS PASSTARVI TNQYNNPAGL YSSENISNFN NALESKTAAS GVEANSRPLD HAQPPSSLVI DKESVYKML QEQQELNEPP KQSTSFLVLQ EILESEEKGD PNKPSGFRSV KAPVTKVAAS IGNAQKLPMC DKCGTGIVGV FVKLRDRHRH PECYVCTDCG TNLKQKGHFF VEDQIYCEKH ARERVTPPEG YEVTVFPPK
Isotype:	IgG
Cross-Reactivity:	Human, Mouse, Rat
Characteristics:	Polyclonal Antibodies

## Target Details

---

Target:	PDLIM1
Alternative Name:	PDLIM1 ( <a href="#">PDLIM1 Products</a> )
Background:	<p>This gene encodes a member of the enigma protein family. The protein contains two protein interacting domains, a PDZ domain at the amino terminal end and one to three LIM domains at the carboxyl terminal. It is a cytoplasmic protein associated with the cytoskeleton. The protein may function as an adapter to bring other LIM-interacting proteins to the cytoskeleton.</p> <p>Pseudogenes associated with this gene are located on chromosomes 3, 14 and 17.,PDLIM1,CLIM1,CLP-36,CLP36,HEL-S-112,hCLIM1,Epigenetics &amp; Nuclear Signaling,Cancer,Endocrine &amp; Metabolism,PDLIM1</p>
Molecular Weight:	36 kDa
Gene ID:	9124
UniProt:	<a href="#">O00151</a>

## Application Details

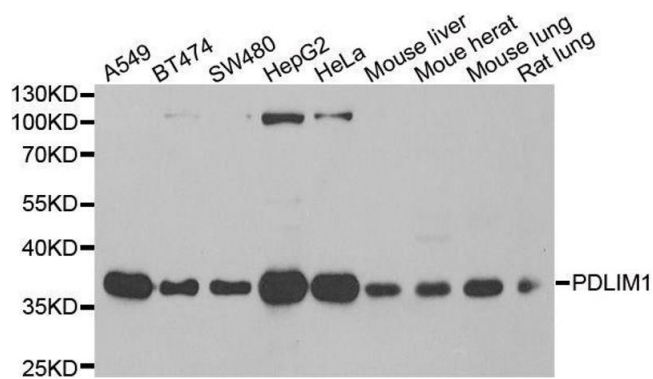
---

Application Notes:	WB,1:500 - 1:2000,IF,1:10 - 1:100
Comment:	HIGH QUALITY
Restrictions:	For Research Use only

## Handling

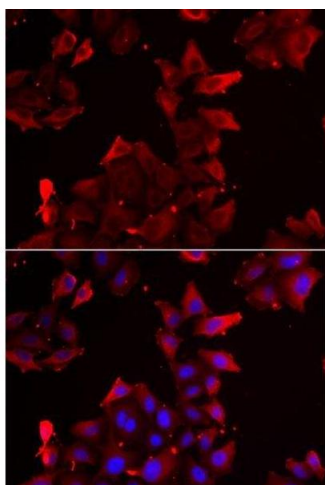
---

Format:	Liquid
Buffer:	PBS with 0.02 % sodium azide,50 % glycerol, pH 7.3.
Preservative:	Sodium azide
Precaution of Use:	This product contains Sodium azide: a POISONOUS AND HAZARDOUS SUBSTANCE which should be handled by trained staff only.
Storage:	-20 °C
Storage Comment:	Store at -20°C. Avoid freeze / thaw cycles.



### Western Blotting

**Image 1.** Western blot analysis of extracts of various cell lines, using PDLIM1 antibody.



### Immunofluorescence

**Image 2.** Immunofluorescence analysis of U2OS cells using PDLIM1 antibody.