

Datasheet for ABIN6145413  
**anti-PDX1 antibody (AA 1-100)**[Go to Product page](#)

## 1 Image

## Overview

Quantity:	100 µL
Target:	PDX1
Binding Specificity:	AA 1-100
Reactivity:	Human
Host:	Rabbit
Clonality:	Polyclonal
Conjugate:	This PDX1 antibody is un-conjugated
Application:	Western Blotting (WB)

## Product Details

Immunogen:	A synthetic peptide corresponding to a sequence within amino acids 1-100 of human PDX1 (NP_000200.1).
Sequence:	MNGEEQYYAA TQLYKDPCAF QRGPAPEFSA SPPACLYMGR QPPPPPPHPF PGALGALEQG SPPDISPYEV PPLADDPAVA HLHHHLPAQL ALPHPPAGPF
Isotype:	IgG
Cross-Reactivity:	Human, Mouse, Rat
Characteristics:	Polyclonal Antibodies

## Target Details

Target:	PDX1
---------	------

## Target Details

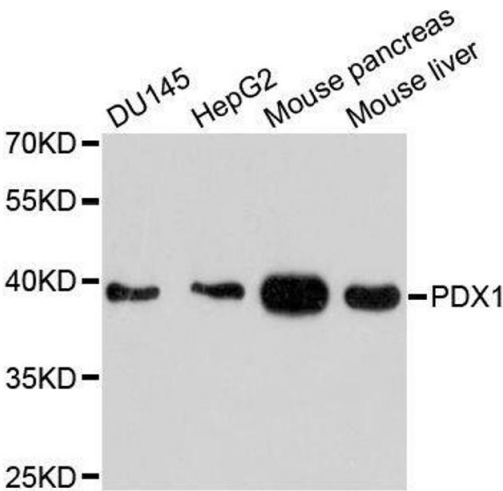
Alternative Name:	PDX1 ( <a href="#">PDX1 Products</a> )
Background:	<p>The protein encoded by this gene is a transcriptional activator of several genes, including insulin, somatostatin, glucokinase, islet amyloid polypeptide, and glucose transporter type 2. The encoded nuclear protein is involved in the early development of the pancreas and plays a major role in glucose-dependent regulation of insulin gene expression. Defects in this gene are a cause of pancreatic agenesis, which can lead to early-onset insulin-dependent diabetes mellitus (NIDDM), as well as maturity onset diabetes of the young type 4 (MODY4).PDX1,GSF,IDX-1,IPF1,IUF1,MODY4,PAGEN1,PDX-1,STF-1,Epigenetics &amp; Nuclear Signaling,Transcription Factors,Cancer,Signal Transduction,Cell Biology &amp; Developmental Biology,Growth factor,Insulin and insulin-like,Endocrine &amp; Metabolism,Endocrine and metabolic diseases,Diabetes,Stem Cells,Cardiovascular,PDX1</p>
Molecular Weight:	30 kDa
Gene ID:	3651
UniProt:	<a href="#">P52945</a>
Pathways:	<a href="#">Nuclear Receptor Transcription Pathway</a> , <a href="#">Positive Regulation of Peptide Hormone Secretion</a> , <a href="#">Steroid Hormone Mediated Signaling Pathway</a> , <a href="#">Hormone Transport</a> , <a href="#">Carbohydrate Homeostasis</a> , <a href="#">Chromatin Binding</a> , <a href="#">Maintenance of Protein Location</a>

## Application Details

Application Notes:	WB,1:500 - 1:1000
Comment:	HIGH QUALITY
Restrictions:	For Research Use only

## Handling

Format:	Liquid
Buffer:	PBS with 0.02 % sodium azide,50 % glycerol, pH 7.3.
Preservative:	Sodium azide
Precaution of Use:	This product contains Sodium azide: a POISONOUS AND HAZARDOUS SUBSTANCE which should be handled by trained staff only.
Storage:	-20 °C
Storage Comment:	Store at -20°C. Avoid freeze / thaw cycles.



Western Blotting

**Image 1.** Western blot analysis of extracts of various cell lines, using PDX1 antibody.