

Datasheet for ABIN6145446
anti-PEPD antibody (AA 288-424)[Go to Product page](#)

1 Image

Overview

Quantity:	100 µL
Target:	PEPD
Binding Specificity:	AA 288-424
Reactivity:	Human
Host:	Rabbit
Clonality:	Polyclonal
Conjugate:	This PEPD antibody is un-conjugated
Application:	Western Blotting (WB)

Product Details

Immunogen:	Recombinant fusion protein containing a sequence corresponding to amino acids 288-424 of human PEPD (NP_000276.2).
Sequence:	ITCSFPANGK FTADQKAVYE AVLRSSRAVM GAMKPGVWWP DMHRLADRIH LEELAHMGIL SGSVDAMVQA HLGAVFMPHG LGHFLGIDVH DVGGYPEGVE RIDEPLRLSL RTARHLQPGM VLTVEPGIYF IDHLLDE
Isotype:	IgG
Cross-Reactivity:	Human, Mouse, Rat
Characteristics:	Polyclonal Antibodies

Target Details

Target:	PEPD
---------	------

Target Details

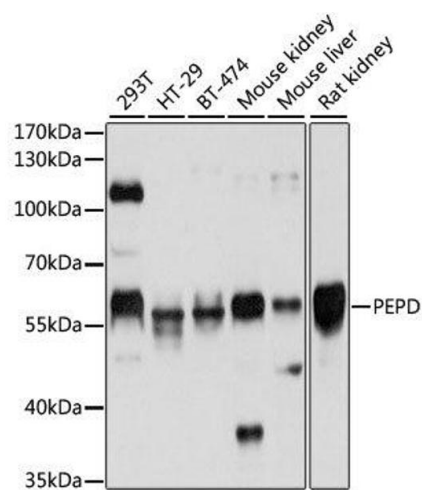
Alternative Name:	PEPD (PEPD Products)
Background:	<p>This gene encodes a member of the peptidase family. The protein forms a homodimer that hydrolyzes dipeptides or tripeptides with C-terminal proline or hydroxyproline residues. The enzyme serves an important role in the recycling of proline, and may be rate limiting for the production of collagen. Mutations in this gene result in prolidase deficiency, which is characterized by the excretion of large amount of di- and tri-peptides containing proline.</p> <p>Multiple transcript variants encoding different isoforms have been found for this gene.,PEPD,PROLIDASE,Signal Transduction,Cell Biology & Developmental Biology,Ubiquitin,Endocrine & Metabolism,Amino acid metabolism,PEPD</p>
Molecular Weight:	47 kDa/49 kDa/54 kDa
Gene ID:	5184
UniProt:	P12955

Application Details

Application Notes:	WB,1:500 - 1:2000
Restrictions:	For Research Use only

Handling

Format:	Liquid
Buffer:	PBS with 0.02 % sodium azide,50 % glycerol, pH 7.3.
Preservative:	Sodium azide
Precaution of Use:	This product contains Sodium azide: a POISONOUS AND HAZARDOUS SUBSTANCE which should be handled by trained staff only.
Storage:	-20 °C
Storage Comment:	Store at -20°C. Avoid freeze / thaw cycles.



Western Blotting

Image 1. Western blot analysis of extracts of various cell lines, using PEPD antibody.