

Datasheet for ABIN6145513

anti-Phosphoglucomutase 1 antibody (AA 1-300)[Go to Product page](#)**1** Image

Overview

Quantity:	100 µL
Target:	Phosphoglucomutase 1 (PGM1)
Binding Specificity:	AA 1-300
Reactivity:	Human
Host:	Rabbit
Clonality:	Polyclonal
Conjugate:	This Phosphoglucomutase 1 antibody is un-conjugated
Application:	Western Blotting (WB)

Product Details

Immunogen:	Recombinant fusion protein containing a sequence corresponding to amino acids 1-300 of human PGM1 (NP_002624.2).
Sequence:	MVKIVTVKTQ AYQDQKPGTS GLRKRVKVFQ SSANYAENFI QSIISTVEPA QRQEATLVVG GDGRFYMKEA IQLIARIAAA NGIGRLVIGQ NGILSTPAVS CIIRKIKAIK GIILTASHNP GGPNGDFGIK FNISNGGPAP EAITDKIFQI SKTIEEYAVC PDLKVDLGV L GKQQFDLENK FKPFTVEIVD SVEAYATMLR SIFDFSALKE LLSGPNRLKI RIDAMHGVVG PYVKKILCEE LGAPANSAVN CVPLEDFGGH HPDPNLT YAA DLVETMKSGE HDFGAAFDGD GDRNMILGKH
Isotype:	IgG
Cross-Reactivity:	Human, Mouse, Rat
Characteristics:	Polyclonal Antibodies

Target Details

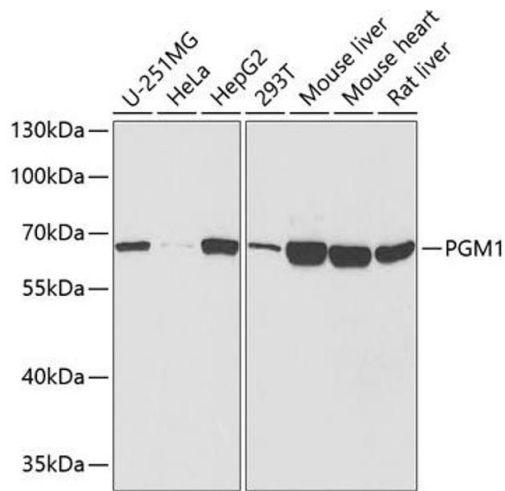
Target:	Phosphoglucomutase 1 (PGM1)
Alternative Name:	PGM1 (PGM1 Products)
Background:	<p>The protein encoded by this gene is an isozyme of phosphoglucomutase (PGM) and belongs to the phosphohexose mutase family. There are several PGM isozymes, which are encoded by different genes and catalyze the transfer of phosphate between the 1 and 6 positions of glucose. In most cell types, this PGM isozyme is predominant, representing about 90 % of total PGM activity. In red cells, PGM2 is a major isozyme. This gene is highly polymorphic. Mutations in this gene cause glycogen storage disease type 14. Alternativley spliced transcript variants encoding different isoforms have been identified in this gene.,PGM1,CDG1T,GSD14,Cancer,Signal Transduction,Endocrine & Metabolism,PGM1</p>
Molecular Weight:	40 kDa/61 kDa/63 kDa
Gene ID:	5236
UniProt:	P36871
Pathways:	Cellular Glucan Metabolic Process

Application Details

Application Notes:	WB,1:500 - 1:2000
Restrictions:	For Research Use only

Handling

Format:	Liquid
Buffer:	PBS with 0.02 % sodium azide,50 % glycerol, pH 7.3.
Preservative:	Sodium azide
Precaution of Use:	This product contains Sodium azide: a POISONOUS AND HAZARDOUS SUBSTANCE which should be handled by trained staff only.
Storage:	-20 °C
Storage Comment:	Store at -20°C. Avoid freeze / thaw cycles.



Western Blotting

Image 1. Western blot analysis of extracts of various cell lines, using PGM1 antibody at 1:1000 dilution. Secondary antibody: HRP Goat Anti-Rabbit IgG (H+L) (ABIN1684268 and ABIN3020597) at 1:10000 dilution. Lysates/proteins: 25 µg per lane. Blocking buffer: 3% nonfat dry milk in TBST. Detection: ECL Enhanced Kit (RM00021). Exposure time: 90s.