



[Go to Product page](#)

Datasheet for ABIN6145545
anti-PHF21B antibody (AA 322-531)

3 Images

Overview

Quantity:	100 µL
Target:	PHF21B
Binding Specificity:	AA 322-531
Reactivity:	Human
Host:	Rabbit
Clonality:	Polyclonal
Conjugate:	This PHF21B antibody is un-conjugated
Application:	Western Blotting (WB)

Product Details

Immunogen:	Recombinant fusion protein containing a sequence corresponding to amino acids 322-531 of human PHF21B (NP_612424.1).
Sequence:	KRLASNYLNN PLFLTARANE DPCWKNEITH DEHCAACKRG ANLQPCGTCP GAYHLSCLEP PLKTAPKGVW VCPRCQKAL KKDEGVPWTG MLAIVHSYVT HKTVKEEEKQ KLLQRGSELQ NEHQLEERD RRLASAVQKC LELKTSLLAR QRG TQSSLDL LRALLRLIQG EQLLQVTMTT TSPAPLLAGP WTKPSVAATH PTVQHPQGHN
Isotype:	IgG
Cross-Reactivity:	Human, Mouse, Rat
Characteristics:	Polyclonal Antibodies

Target Details

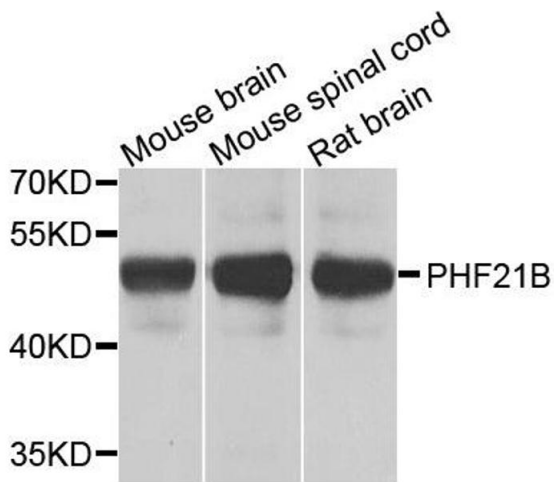
Target:	PHF21B
Alternative Name:	PHF21B (PHF21B Products)
Background:	PHF21B,BHC80L,PHF4,Epigenetics & Nuclear Signaling,Cell Biology & Developmental Biology,PHF21B
Molecular Weight:	51 kDa/53 kDa/57 kDa
Gene ID:	112885
UniProt:	Q96EK2

Application Details

Application Notes:	WB,1:500 - 1:2000
Comment:	HIGH QUALITY
Restrictions:	For Research Use only

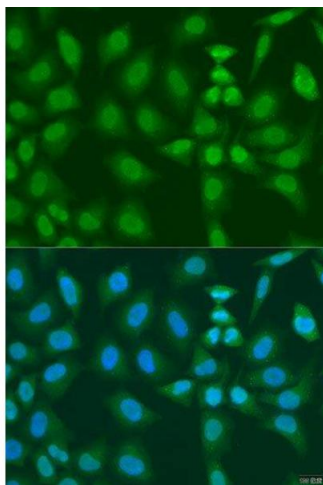
Handling

Format:	Liquid
Buffer:	PBS with 0.02 % sodium azide,50 % glycerol, pH 7.3.
Preservative:	Sodium azide
Precaution of Use:	This product contains Sodium azide: a POISONOUS AND HAZARDOUS SUBSTANCE which should be handled by trained staff only.
Storage:	-20 °C
Storage Comment:	Store at -20°C. Avoid freeze / thaw cycles.



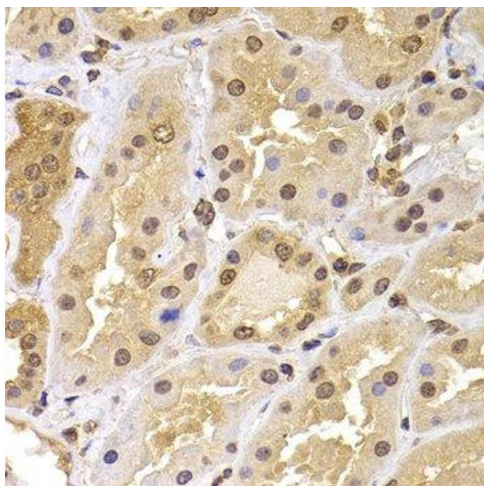
Western Blotting

Image 1. Western blot analysis of extracts of various cell lines, using PHF21B antibody.



Immunofluorescence

Image 2. Immunofluorescence analysis of U2OS cells using PHF21B antibody.



Immunohistochemistry (Paraffin-embedded Sections)

Image 3. Immunohistochemistry of paraffin-embedded human kidney using PHF21B antibody.