



[Go to Product page](#)

Datasheet for ABIN6145606
anti-PICALM antibody (AA 290-460)

1 Image

Overview

Quantity:	100 µL
Target:	PICALM
Binding Specificity:	AA 290-460
Reactivity:	Human
Host:	Rabbit
Clonality:	Polyclonal
Conjugate:	This PICALM antibody is un-conjugated
Application:	Western Blotting (WB)

Product Details

Immunogen:	Recombinant fusion protein containing a sequence corresponding to amino acids 290-460 of human PICALM (NP_001008660.1).
Sequence:	IKDSTAASRA TTLSNAVSSL ASTGLSLTKV DEREKQAALE EEQARLKALK EQRLKELAKK PHTSLTTAAS PVSTSAGGIM TAPAIIDFST PSSSNSTSKL PNDLLDLQQP TFHPSVHPMS TASQVASTWG GFTSPVAQP HPSAGLNVDF ESVFGNKSTN VIVDSGGFDE L
Isotype:	IgG
Cross-Reactivity:	Human, Mouse
Characteristics:	Polyclonal Antibodies

Target Details

Target:	PICALM
---------	--------

Target Details

Alternative Name: [PICALM \(PICALM Products\)](#)

Background: This gene encodes a clathrin assembly protein, which recruits clathrin and adaptor protein complex 2 (AP2) to cell membranes at sites of coated-pit formation and clathrin-vesicle assembly. The protein may be required to determine the amount of membrane to be recycled, possibly by regulating the size of the clathrin cage. The protein is involved in AP2-dependent clathrin-mediated endocytosis at the neuromuscular junction. A chromosomal translocation t(10,11)(p13,q14) leading to the fusion of this gene and the MLLT10 gene is found in acute lymphoblastic leukemia, acute myeloid leukemia and malignant lymphomas. The polymorphisms of this gene are associated with the risk of Alzheimer disease. Multiple alternatively spliced transcript variants encoding different isoforms have been found for this gene. [PICALM](#), [CALM](#), [CLTH](#), [LAP](#), [Signal Transduction](#), [Neuroscience](#), [Neurodegenerative Diseases](#), [Amyloid Plaque and Neurofibrillary Tangle Formation in Alzheimer's Disease](#), [PICALM](#)

Molecular Weight: 59 kDa/66 kDa/68 kDa/70 kDa

Gene ID: 8301

UniProt: [Q13492](#)

Pathways: [Synaptic Membrane](#)

Application Details

Application Notes: WB, 1:1000 - 1:2000

Restrictions: For Research Use only

Handling

Format: Liquid

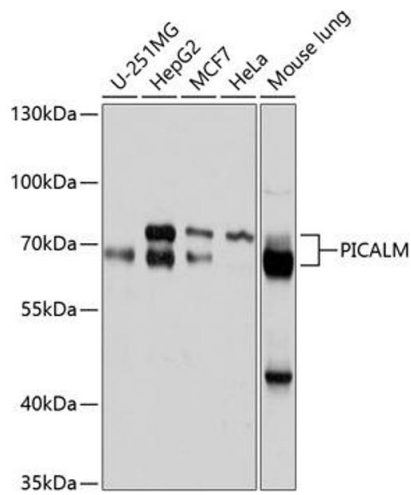
Buffer: PBS with 0.02 % sodium azide, 50 % glycerol, pH 7.3.

Preservative: Sodium azide

Precaution of Use: This product contains Sodium azide: a POISONOUS AND HAZARDOUS SUBSTANCE which should be handled by trained staff only.

Storage: -20 °C

Storage Comment: Store at -20°C. Avoid freeze / thaw cycles.



Western Blotting

Image 1. Western blot analysis of extracts of various cell lines, using PICALM antibody (ABIN6132898, ABIN6145606, ABIN6145607 and ABIN6214874) at 1:1000 dilution. Secondary antibody: HRP Goat Anti-Rabbit IgG (H+L) (ABIN1684268 and ABIN3020597) at 1:10000 dilution. Lysates/proteins: 25 µg per lane. Blocking buffer: 3 % nonfat dry milk in TBST. Detection: ECL Basic Kit (RM00020). Exposure time: 10s.