



[Go to Product page](#)

Datasheet for ABIN6145612  
**anti-PIEZO1 antibody (AA 2230-2420)**

4 Images

Overview

Quantity:	100 µL
Target:	PIEZO1
Binding Specificity:	AA 2230-2420
Reactivity:	Human
Host:	Rabbit
Clonality:	Polyclonal
Conjugate:	This PIEZO1 antibody is un-conjugated
Application:	Western Blotting (WB), Immunofluorescence (IF)

Product Details

Immunogen:	Recombinant fusion protein containing a sequence corresponding to amino acids 2230-2420 of human PIEZO1 (NP_001136336.2).
Sequence:	PSIIPFTAQA YEELSRQFDP QPLAMQFISQ YSPEDIVTAQ IEGSSGALWR ISPPSRAQMK RELYNGTADI TLRFTWNFQR DLAKGGTVEY ANEKHMLALA PNSTARRQLA SLLEGTSDQS VVIPNLFPKY IRAPNGPEAN PVKQLQPNEE ADYLGVRIQL RREQGAGATG FLEWWIELQ ECRTDCNLLP M
Isotype:	IgG
Cross-Reactivity:	Human, Mouse
Characteristics:	Polyclonal Antibodies

## Target Details

---

Target:	PIEZO1
Alternative Name:	PIEZO1 ( <a href="#">PIEZO1 Products</a> )
Background:	The protein encoded by this gene is a mechanically-activated ion channel that links mechanical forces to biological signals. The encoded protein contains 36 transmembrane domains and functions as a homotetramer. Defects in this gene have been associated with dehydrated hereditary stomatocytosis.,PIEZO1,DHS,FAM38A,LMPH3,Mib,PIEZO1
Molecular Weight:	286 kDa
Gene ID:	9780
UniProt:	<a href="#">Q92508</a>

## Application Details

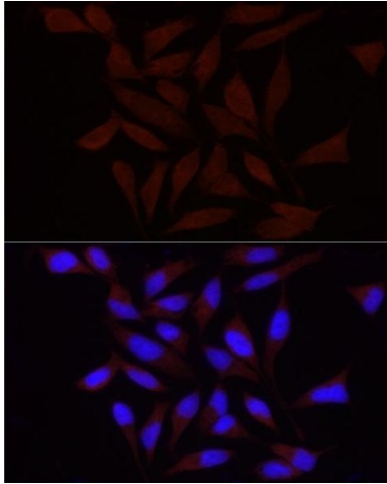
---

Application Notes:	WB,1:500 - 1:2000,IF,1:50 - 1:200
Comment:	HIGH QUALITY
Restrictions:	For Research Use only

## Handling

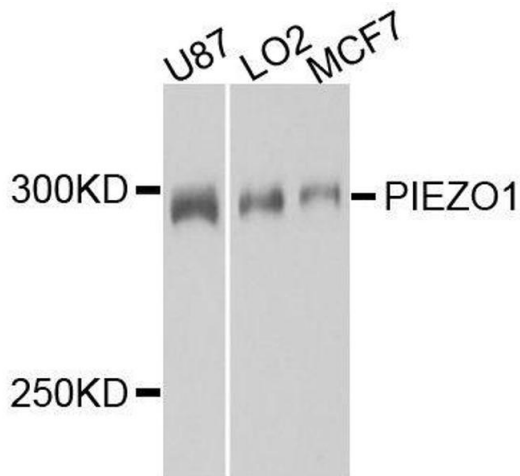
---

Format:	Liquid
Buffer:	PBS with 0.02 % sodium azide,50 % glycerol, pH 7.3.
Preservative:	Sodium azide
Precaution of Use:	This product contains Sodium azide: a POISONOUS AND HAZARDOUS SUBSTANCE which should be handled by trained staff only.
Storage:	-20 °C
Storage Comment:	Store at -20°C. Avoid freeze / thaw cycles.



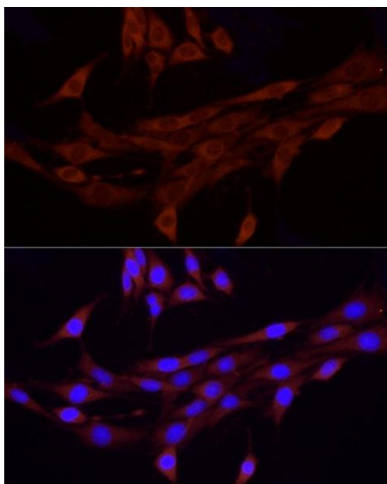
### Immunofluorescence

**Image 1.** Immunofluorescence analysis of HeLa using FA/PIEZO1 antibody (ABIN6133207, ABIN6145612, ABIN6145613 and ABIN6220594) at dilution of 1:100 (40x lens). Blue: DAPI for nuclear staining.



### Western Blotting

**Image 2.** Western blot analysis of extracts of various cell lines, using PIEZO1 antibody.



### Immunofluorescence

**Image 3.** Immunofluorescence analysis of PC-12 using FA/PIEZO1 antibody (ABIN6133207, ABIN6145612, ABIN6145613 and ABIN6220594) at dilution of 1:100 (40x lens). Blue: DAPI for nuclear staining.

Please check the [product details page](#) for more images. Overall 4 images are available for ABIN6145612.