

Datasheet for ABIN6145681
anti-PIP5K1A antibody (AA 231-500)



[Go to Product page](#)

1 Image

Overview

Quantity:	100 µL
Target:	PIP5K1A
Binding Specificity:	AA 231-500
Reactivity:	Human
Host:	Rabbit
Clonality:	Polyclonal
Conjugate:	This PIP5K1A antibody is un-conjugated
Application:	Western Blotting (WB), Immunohistochemistry (IHC)

Product Details

Immunogen:	Recombinant fusion protein containing a sequence corresponding to amino acids 231-500 of human PIP5K1A (NP_001129109.1).
Sequence:	MNLLPRSVK MHIKYDLKGS TYKRRASQKE REKPLPTFKD LDFLQDIPDG LFLDADMYNA LCKTLQRDCL VLQSFKIMDY SLLMSIHNID HAQREPLSSE TQYSVDTRRP APQKALYSTA MESIQGEARR GGTMETDDHM GGIPARNSKG ERLLLYIGII DILQSYRFVK KLEHSWKALV HDGDTVSVHR PGFYAERFQR FMCNTVFKKI PCVHLGRPDV LPQTPPLEEI SEGSPIDPS FSPLVGETLQ MLTTSTTLEK LEVAESEFTH
Isotype:	IgG
Cross-Reactivity:	Human, Mouse
Characteristics:	Polyclonal Antibodies

Target Details

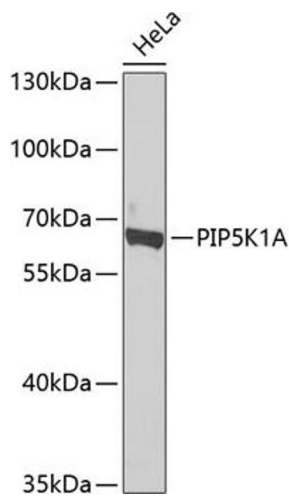
Target:	PIP5K1A
Alternative Name:	PIP5K1A (PIP5K1A Products)
Background:	PIP5K1A,Signal Transduction,Kinase,PI3K-Akt Signaling Pathway,Cell Biology & Developmental Biology,Cytoskeleton,Actins,Endocrine & Metabolism,Lipid Metabolism,PIP5K1A
Molecular Weight:	56 kDa/58 kDa/61 kDa/62 kDa
Gene ID:	8394
UniProt:	Q99755
Pathways:	PI3K-Akt Signaling , Mitotic G1-G1/S Phases , Inositol Metabolic Process , DNA Replication , Cell-Cell Junction Organization , Synthesis of DNA

Application Details

Application Notes:	WB,1:500 - 1:2000,IHC,1:50 - 1:200
Comment:	HIGH QUALITY
Restrictions:	For Research Use only

Handling

Format:	Liquid
Buffer:	PBS with 0.02 % sodium azide,50 % glycerol, pH 7.3.
Preservative:	Sodium azide
Precaution of Use:	This product contains Sodium azide: a POISONOUS AND HAZARDOUS SUBSTANCE which should be handled by trained staff only.
Storage:	-20 °C
Storage Comment:	Store at -20°C. Avoid freeze / thaw cycles.



Western Blotting

Image 1. Western blot analysis of extracts of HeLa cells, using PIP5K1A antibody at 1:1000 dilution. Secondary antibody: HRP Goat Anti-Rabbit IgG (H+L) (ABIN1684268 and ABIN3020597) at 1:10000 dilution. Lysates/proteins: 25 µg per lane. Blocking buffer: 3% nonfat dry milk in TBST. Detection: ECL Basic Kit (RM00020). Exposure time: 90s.