



[Go to Product page](#)

Datasheet for ABIN6145710
anti-PKLR antibody (AA 446-556)

1 Image

Overview

Quantity:	100 µL
Target:	PKLR
Binding Specificity:	AA 446-556
Reactivity:	Human
Host:	Rabbit
Clonality:	Polyclonal
Conjugate:	This PKLR antibody is un-conjugated
Application:	Western Blotting (WB)

Product Details

Immunogen:	Recombinant fusion protein containing a sequence corresponding to amino acids 446-556 of human PKLR (NP_000289.1).
Sequence:	PLSRDPTEVT AIGAVEAAFK CCAAIIIVLT TTGRSAQLLS RYRPRAAVIA VTRSAQAARQ VHLCRGVFPL LYREPPEAIW ADDVDRRVQF GIESGKLRGF LRVGDLVIVV T
Isotype:	IgG
Cross-Reactivity:	Human, Mouse, Rat
Characteristics:	Polyclonal Antibodies

Target Details

Target:	PKLR
---------	------

Target Details

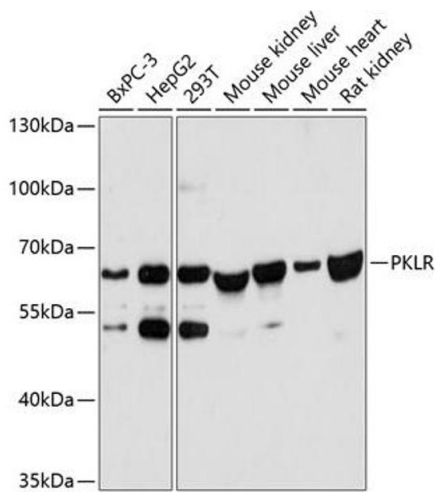
Alternative Name:	PKLR (PKLR Products)
Background:	<p>The protein encoded by this gene is a pyruvate kinase that catalyzes the transphosphorylation of phosphoenolpyruvate into pyruvate and ATP, which is the rate-limiting step of glycolysis. Defects in this enzyme, due to gene mutations or genetic variations, are the common cause of chronic hereditary nonspherocytic hemolytic anemia (CNSHA or HNSHA). Multiple transcript variants encoding different isoforms have been found for this gene.</p> <p>PKLR,PK1,PKL,PKR,PKRL,RPK,Cancer,Signal Transduction,Endocrine & Metabolism,Carbohydrate metabolism,PKLR</p>
Molecular Weight:	58 kDa/61 kDa
Gene ID:	5313
UniProt:	P30613
Pathways:	Ribonucleoside Biosynthetic Process

Application Details

Application Notes:	WB,1:500 - 1:2000
Comment:	HIGH QUALITY
Restrictions:	For Research Use only

Handling

Format:	Liquid
Buffer:	PBS with 0.02 % sodium azide,50 % glycerol, pH 7.3.
Preservative:	Sodium azide
Precaution of Use:	This product contains Sodium azide: a POISONOUS AND HAZARDOUS SUBSTANCE which should be handled by trained staff only.
Storage:	-20 °C
Storage Comment:	Store at -20°C. Avoid freeze / thaw cycles.



Western Blotting

Image 1. Western blot analysis of extracts of various cell lines, using PKLR antibody (ABIN6128469, ABIN6145710, ABIN6145712 and ABIN6215656) at 1:3000 dilution. Secondary antibody: HRP Goat Anti-Rabbit IgG (H+L) (ABIN1684268 and ABIN3020597) at 1:10000 dilution. Lysates/proteins: 25 µg per lane. Blocking buffer: 3 % nonfat dry milk in TBST. Detection: ECL Basic Kit (RM00020). Exposure time: 50s.