

Datasheet for ABIN6145714
anti-PKM antibody (AA 11-221)



[Go to Product page](#)

6 Images

Overview

Quantity:	100 µL
Target:	PKM
Binding Specificity:	AA 11-221
Reactivity:	Human
Host:	Rabbit
Clonality:	Polyclonal
Conjugate:	This PKM antibody is un-conjugated
Application:	Western Blotting (WB), Immunohistochemistry (IHC), Immunofluorescence (IF)

Product Details

Immunogen:	Recombinant fusion protein containing a sequence corresponding to amino acids 11-221 of human PKM2 (NP_002645.3).
Sequence:	AFIQTQQLHA AMADTFLEHM CRLDIDSPPI TARNTGIICT IGPASRSVET LKEMIKSGMN VARLNFSGHT HEYHAETIKN VRTATESFAS DPILYRPVAV ALDTKGPEIR TGLIKGSGTA EVELKKGATL KITLDNAYME KCDENILWLD YKNICKVVEV GSKIYVDDGL ISLQVKQKGA DFLVTEVENG GSLGSKKGVN LPGAAVDLPA V
Isotype:	IgG
Cross-Reactivity:	Human, Mouse, Rat
Characteristics:	Polyclonal Antibodies

Target Details

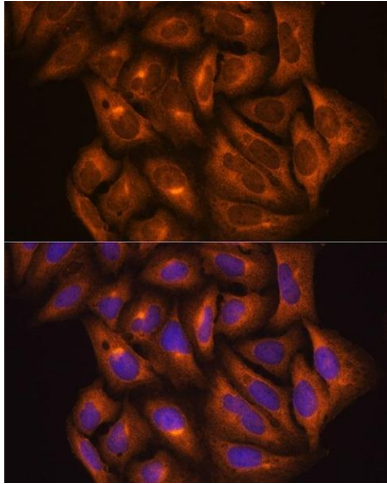
Target:	PKM
Alternative Name:	PKM (PKM Products)
Background:	<p>This gene encodes a protein involved in glycolysis. The encoded protein is a pyruvate kinase that catalyzes the transfer of a phosphoryl group from phosphoenolpyruvate to ADP, generating ATP and pyruvate. This protein has been shown to interact with thyroid hormone and may mediate cellular metabolic effects induced by thyroid hormones. This protein has been found to bind Opa protein, a bacterial outer membrane protein involved in gonococcal adherence to and invasion of human cells, suggesting a role of this protein in bacterial pathogenesis. Several alternatively spliced transcript variants encoding a few distinct isoforms have been reported.,CTHBP,HEL-S-30,OIP3,PK3,PKM2,TCB,THBP1,PKM,Epigenetics & Nuclear Signaling,RNA Binding,Cancer,Tumor biomarkers,Signal Transduction,Endocrine & Metabolism,Carbohydrate metabolism,Warburg Effect,PKM</p>
Molecular Weight:	56 kDa/57 kDa/58 kDa
Gene ID:	5315
UniProt:	P14618
Pathways:	Warburg Effect

Application Details

Application Notes:	WB,1:500 - 1:2000,IHC,1:50 - 1:200,IF,1:50 - 1:200
Restrictions:	For Research Use only

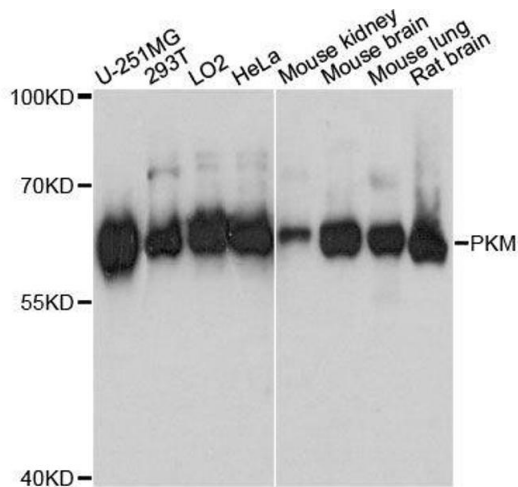
Handling

Format:	Liquid
Buffer:	PBS with 0.02 % sodium azide,50 % glycerol, pH 7.3.
Preservative:	Sodium azide
Precaution of Use:	This product contains Sodium azide: a POISONOUS AND HAZARDOUS SUBSTANCE which should be handled by trained staff only.
Storage:	-20 °C
Storage Comment:	Store at -20°C. Avoid freeze / thaw cycles.



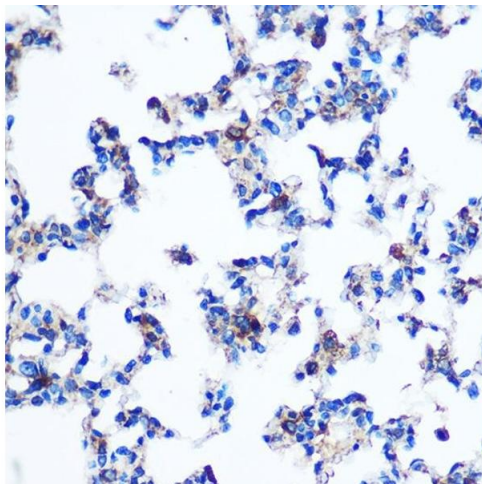
Immunofluorescence

Image 1. Immunofluorescence analysis of U2OS cells using PKM2 Rabbit pAb (ABIN6128296, ABIN6145714, ABIN6145715 and ABIN6218076) at dilution of 1:100 (40x lens). Blue: DAPI for nuclear staining.



Western Blotting

Image 2. Western blot analysis of extracts of various cell lines, using PKM antibody.



Immunohistochemistry

Image 3. Immunohistochemistry of paraffin-embedded Rat lung using PKM2 Rabbit pAb (ABIN6128296, ABIN6145714, ABIN6145715 and ABIN6218076) at dilution of 1:100 (40x lens). Perform microwave antigen retrieval with 10 mM PBS buffer pH 7.2 before commencing with IHC staining protocol.

Please check the [product details page](#) for more images. Overall 6 images are available for ABIN6145714.