



[Go to Product page](#)

Datasheet for ABIN6145735  
**anti-PLA2G7 antibody (AA 172-441)**

1 Image

Overview

Quantity:	100 µL
Target:	PLA2G7 (Lp-PLA2)
Binding Specificity:	AA 172-441
Reactivity:	Human
Host:	Rabbit
Clonality:	Polyclonal
Conjugate:	This PLA2G7 antibody is un-conjugated
Application:	Western Blotting (WB)

Product Details

Immunogen:	Recombinant fusion protein containing a sequence corresponding to amino acids 172-441 of human PLA2G7 (NP_005075.3).
Sequence:	FIVAAVEHRD RSASATYYFK DQSAAEIGDK SWLYLRTLKQ EEETHIRNEQ VRQRAKECSQ ALSLILDIDH GKPVKNALDL KFDMEQLKDS IDREKIAVIG HSGGATVIQ TLSEDQRFRC GIALDAWMFP LGDEVYSRIP QPLFFINSEY FQYPANIIKM KKCYSPOKER KMITIRGSVH QNFADFTFAT GKIIGHMLKL KGDIDSNVAI DLSNKASLAF LQKHLGLHKD FDQWDCLIEG DDENLIPGTN INTTNQHIML QNSSGIEKYN
Isotype:	IgG
Cross-Reactivity:	Human, Mouse, Rat
Characteristics:	Polyclonal Antibodies

## Target Details

---

Target:	PLA2G7 (Lp-PLA2)
Alternative Name:	PLA2G7 ( <a href="#">Lp-PLA2 Products</a> )
Background:	<p>The protein encoded by this gene is a secreted enzyme that catalyzes the degradation of platelet-activating factor to biologically inactive products. Defects in this gene are a cause of platelet-activating factor acetylhydrolase deficiency. Two transcript variants encoding the same protein have been found for this gene.,PLA2G7,LDL-PLA2,LP-PLA2,PAFAD,PAFAH,Immunology &amp; Inflammation,Cell Intrinsic Innate Immunity Signaling Pathway,Neuroscience,Cardiovascular,Blood,Cerebralvascular accident-CVA,PLA2G7</p>
Molecular Weight:	50 kDa
Gene ID:	7941
UniProt:	<a href="#">Q13093</a>
Pathways:	<a href="#">Peptide Hormone Metabolism</a>

## Application Details

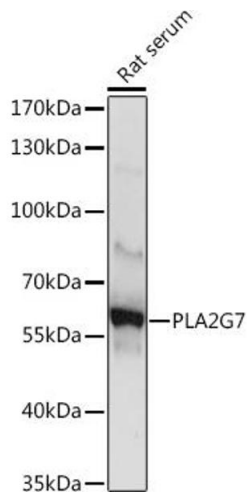
---

Application Notes:	WB,1:500 - 1:1000
Restrictions:	For Research Use only

## Handling

---

Format:	Liquid
Buffer:	PBS with 0.02 % sodium azide,50 % glycerol, pH 7.3.
Preservative:	Sodium azide
Precaution of Use:	This product contains Sodium azide: a POISONOUS AND HAZARDOUS SUBSTANCE which should be handled by trained staff only.
Storage:	-20 °C
Storage Comment:	Store at -20°C. Avoid freeze / thaw cycles.



### Western Blotting

**Image 1.** Western blot analysis of extracts of Rat serum, using PLG7 Rabbit pAb (ABIN6131874, ABIN6145735, ABIN6145737 and ABIN6225094) at 1:1000 dilution. Secondary antibody: HRP Goat Anti-Rabbit IgG (H+L) (ABIN1684268 and ABIN3020597) at 1:10000 dilution. Lysates/proteins: 25 µg per lane. Blocking buffer: 3 % nonfat dry milk in TBST. Detection: ECL Basic Kit (RM00020). Exposure time: 1s.