



[Go to Product page](#)

Datasheet for ABIN6145745

anti-Phospholipase B antibody (AA 1110-1415)

1 Image

Overview

Quantity:	100 µL
Target:	Phospholipase B (PLB)
Binding Specificity:	AA 1110-1415
Reactivity:	Human
Host:	Rabbit
Clonality:	Polyclonal
Conjugate:	This Phospholipase B antibody is un-conjugated
Application:	Western Blotting (WB)

Product Details

Immunogen:	Recombinant fusion protein containing a sequence corresponding to amino acids 1110-1415 of human PLB1 (NP_694566.4).
Sequence:	ARPNNSSDLP TSWRGLSWSI GGDGNLEHT TLPNILKKFN PYLLGFSTST WEGTAGLNVA AEGARARDMP AQAWDLVERM KNSPDINLEK DWKLVTLFIG VNDLCHYCEN PEAHLATEYV QHIQQALDIL SEELPRAFVN VVEVMELASL YQGQGGKCAM LAAQNNCTCL RHSQSSLEKQ ELKKVNWNLQ HGISSFSYWH QYTQREDFAV VVQPPFQNTL TPLNERGDTD LTFSEDCFH FSDRGHAEMA IALWNNMLEP VGRKTTNNF THSRAKLCPC SPESPYLYTL RNSRLLPDQA EEAPEV
Isotype:	IgG
Cross-Reactivity:	Human, Mouse, Rat
Characteristics:	Polyclonal Antibodies

Target Details

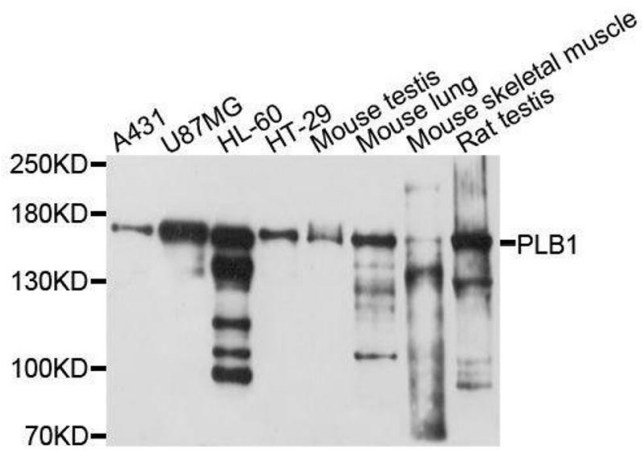
Target:	Phospholipase B (PLB)
Alternative Name:	PLB1 (PLB Products)
Background:	<p>This gene encodes a membrane-associated phospholipase that displays lysophospholipase and phospholipase A2 activities through removal of sn-1 and sn-2 fatty acids of glycerophospholipids. In addition, it displays lipase and retinyl ester hydrolase activities. The encoded protein is highly conserved and is composed of a large, glycosylated extracellular domain composed of four tandem homologous domains, followed by a hydrophobic segment that anchors the enzyme to the membrane and a short C-terminal cytoplasmic tail. This gene has been identified as a candidate rheumatoid arthritis risk gene.,PLB1,PLB,PLB/LIP,hPLB,Cancer,Signal Transduction,Endocrine & Metabolism,Lipid Metabolism,Lipases,Cardiovascular,Lipids,PLB1</p>
Molecular Weight:	47 kDa/54 kDa/85 kDa/161 kDa/163 kDa
Gene ID:	151056
UniProt:	Q6P1J6

Application Details

Application Notes:	WB,1:500 - 1:2000
Comment:	HIGH QUALITY
Restrictions:	For Research Use only

Handling

Format:	Liquid
Buffer:	PBS with 0.02 % sodium azide,50 % glycerol, pH 7.3.
Preservative:	Sodium azide
Precaution of Use:	This product contains Sodium azide: a POISONOUS AND HAZARDOUS SUBSTANCE which should be handled by trained staff only.
Storage:	-20 °C
Storage Comment:	Store at -20°C. Avoid freeze / thaw cycles.



Western Blotting

Image 1. Western blot analysis of extracts of various cell lines, using PLB1 antibody.