



[Go to Product page](#)

Datasheet for ABIN6145781  
**anti-PLK4 antibody (AA 641-970)**

1 Image

Overview

Quantity:	100 µL
Target:	PLK4
Binding Specificity:	AA 641-970
Reactivity:	Human
Host:	Rabbit
Clonality:	Polyclonal
Conjugate:	This PLK4 antibody is un-conjugated
Application:	Western Blotting (WB)

Product Details

Immunogen:	Recombinant fusion protein containing a sequence corresponding to amino acids 641-970 of human PLK4 (NP_055079.3).
Sequence:	SDGNTITIYY PNGGRGFPLA DRPPSPTDNI SRYSDNLPE KYWRKYQYAS RFVQLVRSKS PKITYFTRYA KCILMENSPG ADFEVWFYDG VKIHKTEDFI QVIEKTGKSY TLKSESEVNS LKEEIKMYMD HANEGHRICL ALESIIEEEE RKTRSAPFFP IIIGRKPGST SSPKALSPPP SVDSNYPTRE RASFNRMMVMH SAASPTQAPI LNPSMVTNEG LGLTTTASGT DISSNSLKDC LPKSAQLLKS VFKNVGWAT QLTSGAVVVQ FNDGSQLVVQ AGVSSISYTS PNGQTTRYGE NEKLDPYIKQ KLQCLSSILL MFSNPTPNFH
Isotype:	IgG
Cross-Reactivity:	Human, Mouse, Rat
Characteristics:	Polyclonal Antibodies

## Target Details

---

Target:	PLK4
Alternative Name:	PLK4 ( <a href="#">PLK4 Products</a> )
Target Type:	Phage Protein
Background:	This gene encodes a member of the polo family of serine/threonine protein kinases. The protein localizes to centrioles, complex microtubule-based structures found in centrosomes, and regulates centriole duplication during the cell cycle. Three alternatively spliced transcript variants that encode different protein isoforms have been found for this gene.,PLK4,MCCRP2,SAK,STK18,Epigenetics & Nuclear Signaling,Signal Transduction,Kinase,Cell Biology & Developmental Biology,Cell Cycle,Centrosome,Cell cycle inhibitors,PLK4
Molecular Weight:	104 kDa/105 kDa/108 kDa
Gene ID:	10733
UniProt:	<a href="#">O00444</a>
Pathways:	<a href="#">M Phase</a>

## Application Details

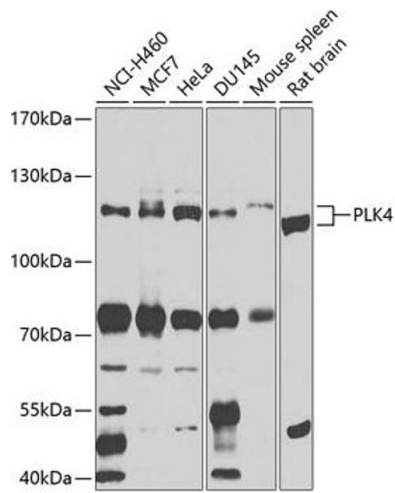
---

Application Notes:	WB,1:500 - 1:2000
Comment:	HIGH QUALITY
Restrictions:	For Research Use only

## Handling

---

Format:	Liquid
Buffer:	PBS with 0.02 % sodium azide,50 % glycerol, pH 7.3.
Preservative:	Sodium azide
Precaution of Use:	This product contains Sodium azide: a POISONOUS AND HAZARDOUS SUBSTANCE which should be handled by trained staff only.
Storage:	-20 °C
Storage Comment:	Store at -20°C. Avoid freeze / thaw cycles.



### Western Blotting

**Image 1.** Western blot analysis of extracts of various cell lines, using PLK4 antibody (ABIN6132496, ABIN6145781, ABIN6145782 and ABIN6225196) at 1:1000 dilution. Secondary antibody: HRP Goat Anti-Rabbit IgG (H+L) (ABIN1684268 and ABIN3020597) at 1:10000 dilution. Lysates/proteins: 25 µg per lane. Blocking buffer: 3 % nonfat dry milk in TBST. Detection: ECL Basic Kit (RM00020). Exposure time: 15s.