



[Go to Product page](#)

Datasheet for ABIN6145806
anti-PLXNB1 antibody (AA 250-470)

1 Image

Overview

Quantity:	100 µL
Target:	PLXNB1
Binding Specificity:	AA 250-470
Reactivity:	Human
Host:	Rabbit
Clonality:	Polyclonal
Conjugate:	This PLXNB1 antibody is un-conjugated
Application:	Western Blotting (WB)

Product Details

Immunogen:	Recombinant fusion protein containing a sequence corresponding to amino acids 250-470 of human PLXNB1 (NP_002664.2).
Sequence:	RVCLRDQHYY SYVELPLACE GGRYGLIQAA AVATSREVAH GEVLFAAFSS AAPPTVGRPP SAAAGASGAS ALCAFPLEDEV DRLANRTRDA CYTREGRAED GTEVAYIEYD VNSDCAQLPV DTLDAYPCGS DHTPSPMASR VPLEATPILE WPGIQLTAVA VTMEDGHTIA FLGDSQGQLH RVYLGPGSDG HPYSTQSIQQ GSAVSRDLTF DGTFEHLVVM T
Isotype:	IgG
Cross-Reactivity:	Human, Mouse
Characteristics:	Polyclonal Antibodies

Target Details

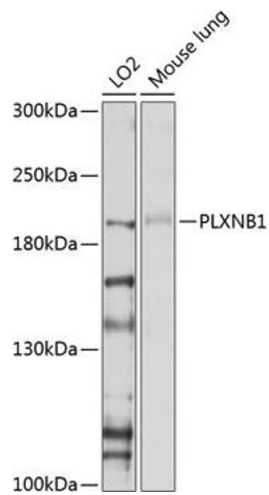
Target:	PLXNB1
Alternative Name:	PLXNB1 (PLXNB1 Products)
Background:	Receptor for SEMA4D. Plays a role in GABAergic synapse development (By similarity. Mediates SEMA4A- and SEMA4D-dependent inhibitory synapse development (By similarity. Plays a role in RHOA activation and subsequent changes of the actin cytoskeleton. Plays a role in axon guidance, invasive growth and cell migration.,PLXNB1,PLEXIN-B1,PLXN5,SEP,plexin-B1,Neuroscience,PLXNB1
Molecular Weight:	78 kDa/214 kDa/232 kDa
Gene ID:	5364
UniProt:	043157

Application Details

Application Notes:	WB,1:500 - 1:2000
Restrictions:	For Research Use only

Handling

Format:	Liquid
Buffer:	PBS with 0.02 % sodium azide,50 % glycerol, pH 7.3.
Preservative:	Sodium azide
Precaution of Use:	This product contains Sodium azide: a POISONOUS AND HAZARDOUS SUBSTANCE which should be handled by trained staff only.
Storage:	-20 °C
Storage Comment:	Store at -20°C. Avoid freeze / thaw cycles.



Western Blotting

Image 1. Western blot analysis of extracts of various cell lines, using PLXNB1 antibody (ABIN6129763, ABIN6145806, ABIN6145807 and ABIN6214109) at 1:1000 dilution. Secondary antibody: HRP Goat Anti-Rabbit IgG (H+L) (ABIN1684268 and ABIN3020597) at 1:10000 dilution. Lysates/proteins: 25 μ g per lane. Blocking buffer: 3 % nonfat dry milk in TBST. Detection: ECL Basic Kit (RM00020). Exposure time: 60s.