



[Go to Product page](#)

Datasheet for ABIN6145894
anti-POLG2 antibody (AA 216-485)

6 Images

Overview

Quantity:	100 µL
Target:	POLG2
Binding Specificity:	AA 216-485
Reactivity:	Human
Host:	Rabbit
Clonality:	Polyclonal
Conjugate:	This POLG2 antibody is un-conjugated
Application:	Immunohistochemistry (IHC), Western Blotting (WB), Immunofluorescence (IF)

Product Details

Immunogen:	Recombinant fusion protein containing a sequence corresponding to amino acids 216-485 of human POLG2 (NP_009146.2).
Sequence:	HPVFDTKQIR NGVKSIGECT EASLVWFTPP RTSNQWLDFW LRHRLQWWRK FAMSPSNFSS SDCQDEEGRK GNKLYYNFPW GKELIETLWN LGDHELLHMY PGNVSKLHGR DGRKNVPCV LSVNGDLDRG MLAYLYDSFQ LTENSFTRKK NLHRKVLKLH PCLAPIKVAL DVGRGPTLEL RQVCQGLFNE LLENGISVWP GYLETMQSSL EQLYSKYDEM SILFTVLVTE TTLENGLIHL RSRDTTMKEM MHISKLKDFL IKYISSAKNV
Isotype:	IgG
Cross-Reactivity:	Human, Mouse, Rat
Characteristics:	Polyclonal Antibodies

Target Details

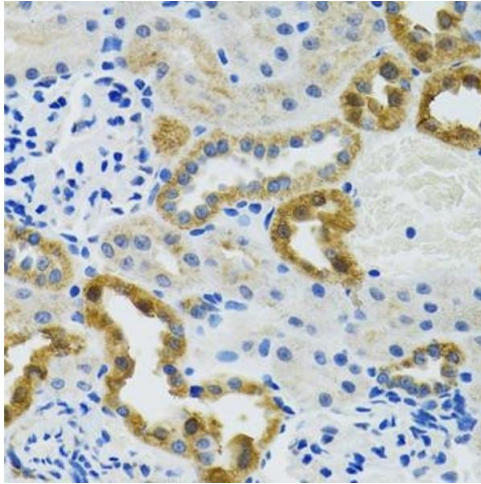
Target:	POLG2
Alternative Name:	POLG2 (POLG2 Products)
Background:	<p>This gene encodes the processivity subunit of the mitochondrial DNA polymerase gamma. The encoded protein forms a heterotrimer containing one catalytic subunit and two processivity subunits. This protein enhances DNA binding and promotes processive DNA synthesis. Mutations in this gene result in autosomal dominant progressive external ophthalmoplegia with mitochondrial DNA deletions.,POLG2,HP55,MTPOLB,PEOA4,POLB,POLG-BETA,POLGB,Epigenetics & Nuclear Signaling,Endocrine & Metabolism,Mitochondrial metabolism,POLG2</p>
Molecular Weight:	54 kDa
Gene ID:	11232
UniProt:	Q9UHN1

Application Details

Application Notes:	WB,1:500 - 1:2000,IHC,1:50 - 1:200,IF,1:10 - 1:100
Restrictions:	For Research Use only

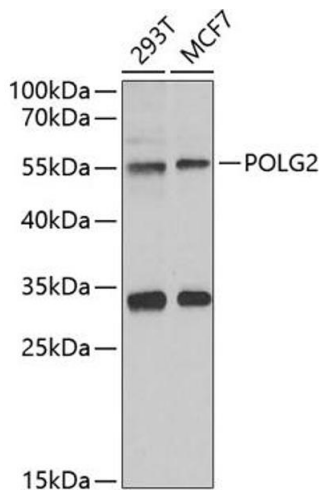
Handling

Format:	Liquid
Buffer:	PBS with 0.02 % sodium azide,50 % glycerol, pH 7.3.
Preservative:	Sodium azide
Precaution of Use:	This product contains Sodium azide: a POISONOUS AND HAZARDOUS SUBSTANCE which should be handled by trained staff only.
Storage:	-20 °C
Storage Comment:	Store at -20°C. Avoid freeze / thaw cycles.



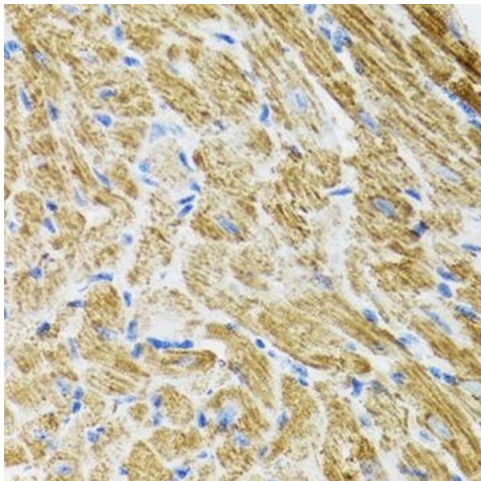
Immunohistochemistry

Image 1. Immunohistochemistry of paraffin-embedded mouse kidney using POLG2 antibody (ABIN6132502, ABIN6145894, ABIN6145895 and ABIN6222405) at dilution of 1:100 (40x lens). Perform microwave antigen retrieval with 10 mM PBS buffer pH 7.2 before commencing with IHC staining protocol.



Western Blotting

Image 2. Western blot analysis of extracts of various cell lines, using POLG2 antibody (ABIN6132502, ABIN6145894, ABIN6145895 and ABIN6222405) at 1:1000 dilution. Secondary antibody: HRP Goat Anti-Rabbit IgG (H+L) (ABIN1684268 and ABIN3020597) at 1:10000 dilution. Lysates/proteins: 25 µg per lane. Blocking buffer: 3 % nonfat dry milk in TBST. Detection: ECL Basic Kit (RM00020). Exposure time: 90s.



Immunohistochemistry

Image 3. Immunohistochemistry of paraffin-embedded rat heart using POLG2 antibody (ABIN6132502, ABIN6145894, ABIN6145895 and ABIN6222405) at dilution of 1:100 (40x lens). Perform microwave antigen retrieval with 10 mM PBS buffer pH 7.2 before commencing with IHC staining protocol.

Please check the [product details page](#) for more images. Overall 6 images are available for ABIN6145894.