

Datasheet for ABIN6145916
anti-POLR2B antibody (AA 1-260)



[Go to Product page](#)

5 Images

Overview

Quantity:	100 µL
Target:	POLR2B
Binding Specificity:	AA 1-260
Reactivity:	Human
Host:	Rabbit
Clonality:	Polyclonal
Conjugate:	This POLR2B antibody is un-conjugated
Application:	Western Blotting (WB), Immunohistochemistry (IHC)

Product Details

Immunogen:	Recombinant fusion protein containing a sequence corresponding to amino acids 1-260 of human POLR2B (NP_000929.1).
Sequence:	MYDADEDMQY DEDDDEITPD LWQEACWIVI SSYFDEKGLV RQQLDSFDEF IQMSVQRIVE DAPPIDLQAE AQHASGEVEE PPRYLLKFEQ IYLSKPTHWE RDGAPSPMMP NEARLRNLTY SAPLYVDITK TVIKEGEEQL QTQHKTFIG KIPIMLRSTY CLLNGLTDRD LCELNECPLD PGGYFIINGS EKVLIAQEKM ATNTVYVFAK KDSKYAYTGE CRSCLENSR PTSTIWVSMML ARGGQGAKKS AIGQRIVATL
Isotype:	IgG
Cross-Reactivity:	Human, Mouse, Rat
Characteristics:	Polyclonal Antibodies

Target Details

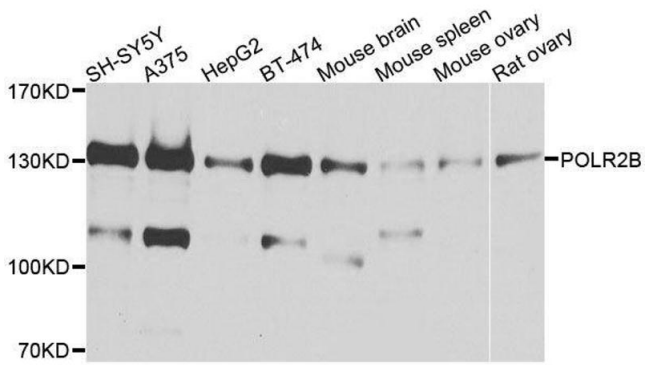
Target:	POLR2B
Alternative Name:	POLR2B (POLR2B Products)
Background:	<p>This gene encodes the second largest subunit of RNA polymerase II (Pol II), a DNA-dependent RNA polymerase that catalyzes the transcription of DNA into precursors of mRNA, snRNA and microRNA. This subunit and the largest subunit form opposite sides of the center cleft of Pol II. Deletion of the flap loop region of this subunit results in a decrease in the rate of transcriptional elongation. Alternative splicing results in multiple transcript variants.,POLR2B,POL2RB,RPB2,hRPB140,Epigenetics & Nuclear Signaling,RNA Binding,Neuroscience,Neurodegenerative Diseases,POLR2B</p>
Molecular Weight:	133 kDa
Gene ID:	5431
UniProt:	P30876
Pathways:	Regulatory RNA Pathways , DNA Damage Repair

Application Details

Application Notes:	WB,1:500 - 1:2000,IHC,1:50 - 1:200
Comment:	HIGH QUALITY
Restrictions:	For Research Use only

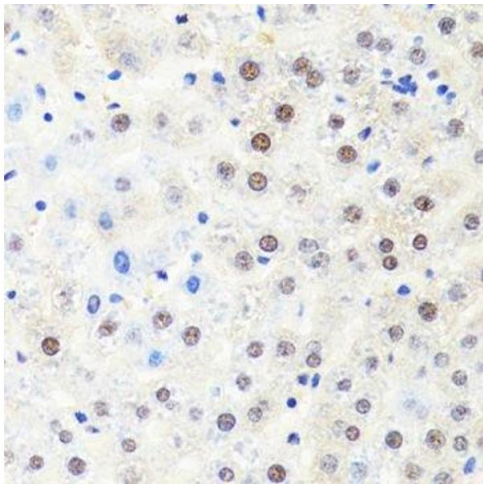
Handling

Format:	Liquid
Buffer:	PBS with 0.02 % sodium azide,50 % glycerol, pH 7.3.
Preservative:	Sodium azide
Precaution of Use:	This product contains Sodium azide: a POISONOUS AND HAZARDOUS SUBSTANCE which should be handled by trained staff only.
Storage:	-20 °C
Storage Comment:	Store at -20°C. Avoid freeze / thaw cycles.



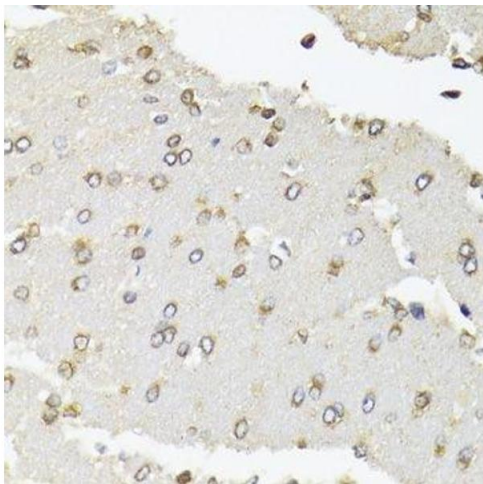
Western Blotting

Image 1. Western blot analysis of extracts of various cell lines, using POLR2B antibody.



Immunohistochemistry (Paraffin-embedded Sections)

Image 2. Immunohistochemistry of paraffin-embedded rat liver using POLR2B antibody.



Immunohistochemistry (Paraffin-embedded Sections)

Image 3. Immunohistochemistry of paraffin-embedded rat brain using POLR2B antibody.

Please check the [product details page](#) for more images. Overall 5 images are available for ABIN6145916.