



[Go to Product page](#)

Datasheet for ABIN6145938  
**anti-POLR3B antibody (AA 680-900)**

1 Image

Overview

Quantity:	100 µL
Target:	POLR3B
Binding Specificity:	AA 680-900
Reactivity:	Human
Host:	Rabbit
Clonality:	Polyclonal
Conjugate:	This POLR3B antibody is un-conjugated
Application:	Western Blotting (WB)

Product Details

Immunogen:	Recombinant fusion protein containing a sequence corresponding to amino acids 680-900 of human POLR3B (NP_060552.4).
Sequence:	SPRNTYQCAM GKQAMGTIGY NQRNRIDTLM YLLAYPQKPM VKTKTIELIE FEKLPAGQNA TVAVMSYSGY DIEDALVLNK ASLDRGFGRC LVYKNAKCTL KRYTNQTFDK VMGPMLDAAT RKPIWRHEIL DAGGICSPGE KVENKQVLVN KSMPTVTQIP LEGSNVPQQP QYKDVPITYK GATDSYIEKV MISSNAEDAF LIKMLLRQTR RPEIGDKFSS R
Isotype:	IgG
Cross-Reactivity:	Human, Mouse, Rat
Characteristics:	Polyclonal Antibodies

## Target Details

---

Target:	POLR3B
Alternative Name:	POLR3B ( <a href="#">POLR3B Products</a> )
Background:	This gene encodes the second largest subunit of RNA polymerase III, the polymerase responsible for synthesizing transfer and small ribosomal RNAs in eukaryotes. The largest subunit and the encoded protein form the catalytic center of RNA polymerase III. Mutations in this gene are a cause of hypomyelinating leukodystrophy. Alternatively spliced transcript variants encoding multiple isoforms have been observed for this gene.,POLR3B,C128,HLD8,INMAP,RPC2,Epigenetics & Nuclear Signaling,POLR3B
Molecular Weight:	121 kDa/127 kDa
Gene ID:	55703
UniProt:	<a href="#">Q9NW08</a>

## Application Details

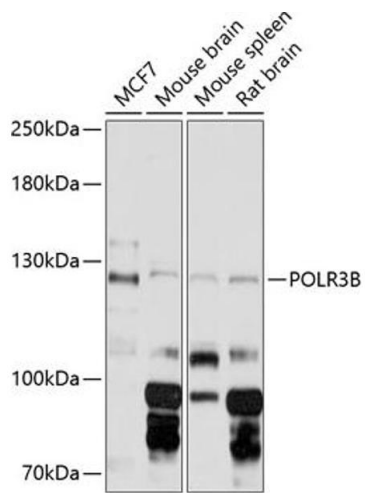
---

Application Notes:	WB,1:1000 - 1:2000
Restrictions:	For Research Use only

## Handling

---

Format:	Liquid
Buffer:	PBS with 0.02 % sodium azide,50 % glycerol, pH 7.3.
Preservative:	Sodium azide
Precaution of Use:	This product contains Sodium azide: a POISONOUS AND HAZARDOUS SUBSTANCE which should be handled by trained staff only.
Storage:	-20 °C
Storage Comment:	Store at -20°C. Avoid freeze / thaw cycles.



### Western Blotting

**Image 1.** Western blot analysis of extracts of various cell lines, using POLR3B Antibody (ABIN6132503, ABIN6145938, ABIN6145939 and ABIN6216383) at 1:3000 dilution. Secondary antibody: HRP Goat Anti-Rabbit IgG (H+L) (ABIN1684268 and ABIN3020597) at 1:10000 dilution. Lysates/proteins: 25 µg per lane. Blocking buffer: 3 % nonfat dry milk in TBST. Detection: ECL Basic Kit (RM00020). Exposure time: 5s.