



[Go to Product page](#)

Datasheet for ABIN6145994  
**anti-PPAN antibody (AA 1-300)**

4 Images

Overview

Quantity:	100 µL
Target:	PPAN
Binding Specificity:	AA 1-300
Reactivity:	Human
Host:	Rabbit
Clonality:	Polyclonal
Conjugate:	This PPAN antibody is un-conjugated
Application:	Western Blotting (WB), Immunohistochemistry (IHC), Immunofluorescence (IF)

Product Details

Immunogen:	Recombinant fusion protein containing a sequence corresponding to amino acids 1-300 of human PPAN (NP_064615.3).
Sequence:	MGQSGRSRHQ KRARAQQLR NLEAYAANPH SFVFTRGCTG RNIRQLSDV RRVMEPLTAS RLQVRKKNSL KDCVAVAGPL GVTHFLILSK TETNVYFKLM RLPGGPTLTF QVKKYSLVRD VVSSLRHRM HEQQFAHPPL LVLNSFGPHG MHVKLMATMF QNLFPSINVH KVNLTIKRC LLIDYNPDSQ ELDFRHYSIK VVPVGASRGM KLLQEKFPN MSRLQDISEL LATGAGLSES EAEPDGDHNI TELPQAVAGR GNMRAQSAV RLTEIGPRMT LQLIKVQEGV GEGKVMFHSF
Isotype:	IgG
Cross-Reactivity:	Human, Mouse
Characteristics:	Polyclonal Antibodies

## Target Details

---

Target:	PPAN
Alternative Name:	PPAN ( <a href="#">PPAN Products</a> )
Background:	<p>The protein encoded by this gene is an evolutionarily conserved protein similar to yeast SSF1 as well as to the gene product of the Drosophila gene peter pan (ppan). SSF1 is known to be involved in the second step of mRNA splicing. Both SSF1 and ppan are essential for cell growth and proliferation. Exogenous expression of this gene was reported to reduce the anchorage-independent growth of some tumor cells. Read-through transcription of this gene with P2RY11/P2Y(11), an adjacent downstream gene that encodes an ATP receptor, has been found. These read-through transcripts are ubiquitously present and up-regulated during granulocyte differentiation.,PPAN,BXDC3,SSF,SSF-1,SSF1,SSF2,Epigenetics &amp; Nuclear Signaling,RNA Binding,Signal Transduction,G protein signaling,G-Protein-Coupled Receptors(GPCR),PPAN</p>
Molecular Weight:	51 kDa/53 kDa/58 kDa
Gene ID:	56342
UniProt:	<a href="#">Q9NQ55</a>

## Application Details

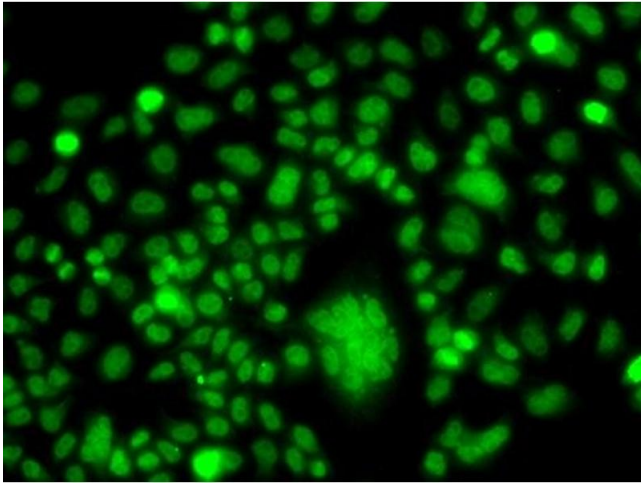
---

Application Notes:	WB,1:500 - 1:2000,IHC,1:50 - 1:200,IF,1:50 - 1:200
Restrictions:	For Research Use only

## Handling

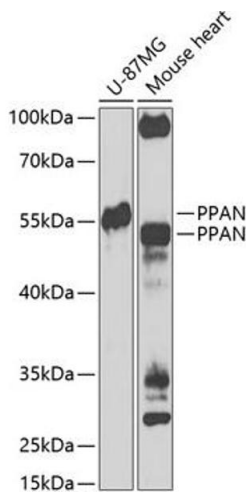
---

Format:	Liquid
Buffer:	PBS with 0.02 % sodium azide,50 % glycerol, pH 7.3.
Preservative:	Sodium azide
Precaution of Use:	This product contains Sodium azide: a POISONOUS AND HAZARDOUS SUBSTANCE which should be handled by trained staff only.
Storage:	-20 °C
Storage Comment:	Store at -20°C. Avoid freeze / thaw cycles.



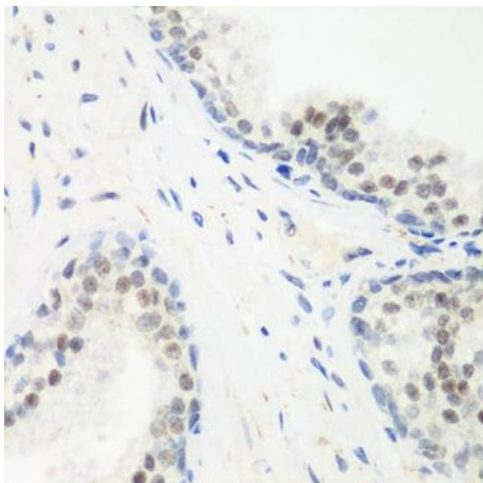
### Immunofluorescence

**Image 1.** Immunofluorescence analysis of cells using PPAN antibody (ABIN6133157, ABIN6145994, ABIN6145996 and ABIN6223238).



### Western Blotting

**Image 2.** Western blot analysis of extracts of various cell lines, using PPAN Antibody (ABIN6133157, ABIN6145994, ABIN6145996 and ABIN6223238) at 1:1000 dilution. Secondary antibody: HRP Goat Anti-Rabbit IgG (H+L) (ABIN1684268 and ABIN3020597) at 1:10000 dilution. Lysates/proteins: 25 µg per lane. Blocking buffer: 3 % nonfat dry milk in TBST. Detection: ECL Enhanced Kit (RM00021). Exposure time: 90s.



### Immunohistochemistry

**Image 3.** Immunohistochemistry of paraffin-embedded human prostate using PPAN antibody (ABIN6133157, ABIN6145994, ABIN6145996 and ABIN6223238) at dilution of 1:200 (40x lens). Perform microwave antigen retrieval with 10 mM PBS buffer pH 7.2 before commencing with IHC staining protocol.

Please check the [product details page](#) for more images. Overall 4 images are available for ABIN6145994.