



Datasheet for ABIN6146015
anti-PPFIA1 antibody (AA 660-800)



[Go to Product page](#)

1 Image

Overview

Quantity:	100 µL
Target:	PPFIA1
Binding Specificity:	AA 660-800
Reactivity:	Human
Host:	Rabbit
Clonality:	Polyclonal
Conjugate:	This PPFIA1 antibody is un-conjugated
Application:	Western Blotting (WB)

Product Details

Immunogen:	Recombinant fusion protein containing a sequence corresponding to amino acids 660-800 of human PPFIA1 (NP_003617.1).
Sequence:	IESRVGSGSL DNLGRFRSMS SIPPYPASSL ASSSPPGSGR STPRRIPHSP AREVDRLGVM TLLPPSREEV RDDKTTIKCE TSPSSPRAL RLDRLHKGAL HTVSHEDIRD IRNSTGSQDG PVSNPSSSNS SQDSLHKAPK K
Isotype:	IgG
Cross-Reactivity:	Human
Characteristics:	Polyclonal Antibodies

Target Details

Target:	PPFIA1
---------	--------

Target Details

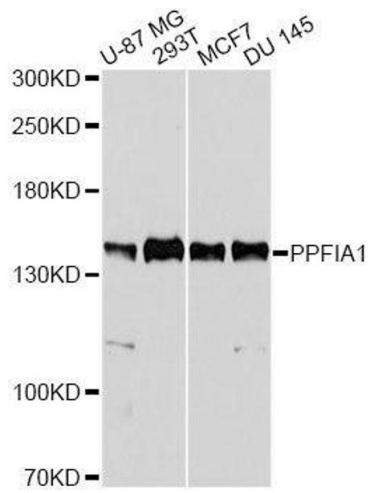
Alternative Name:	PPFIA1 (PPFIA1 Products)
Background:	<p>The protein encoded by this gene is a member of the LAR protein-tyrosine phosphatase-interacting protein (liprin) family. Liprins interact with members of LAR family of transmembrane protein tyrosine phosphatases, which are known to be important for axon guidance and mammary gland development. This protein binds to the intracellular membrane-distal phosphatase domain of tyrosine phosphatase LAR, and appears to localize LAR to cell focal adhesions. This interaction may regulate the disassembly of focal adhesion and thus help orchestrate cell-matrix interactions. Alternatively spliced transcript variants encoding distinct isoforms have been described.,PPFIA1,LIP.1,LIP1,LIPRIN,Signal Transduction,Neuroscience,PPFIA1</p>
Molecular Weight:	133 kDa/135 kDa
Gene ID:	8500
UniProt:	Q13136

Application Details

Application Notes:	WB,1:500 - 1:2000
Comment:	HIGH QUALITY
Restrictions:	For Research Use only

Handling

Format:	Liquid
Buffer:	PBS with 0.02 % sodium azide,50 % glycerol, pH 7.3.
Preservative:	Sodium azide
Precaution of Use:	This product contains Sodium azide: a POISONOUS AND HAZARDOUS SUBSTANCE which should be handled by trained staff only.
Storage:	-20 °C
Storage Comment:	Store at -20°C. Avoid freeze / thaw cycles.



Western Blotting

Image 1. Western blot analysis of extracts of various cell lines, using PPFIA1 antibody.