



[Go to Product page](#)

Datasheet for ABIN6146036
anti-PPL antibody (AA 1-130)

2 Images

Overview

Quantity:	100 µL
Target:	PPL
Binding Specificity:	AA 1-130
Reactivity:	Human
Host:	Rabbit
Clonality:	Polyclonal
Conjugate:	This PPL antibody is un-conjugated
Application:	Western Blotting (WB), Immunofluorescence (IF)

Product Details

Immunogen:	Recombinant fusion protein containing a sequence corresponding to amino acids 1-130 of human PPL (NP_002696.3).
Sequence:	MNSLFRKRNK GKYSPTVQTR SISNKESEL IEQLQKNADQ VEKNIVDTEA KMQSDLARLQ EGRQPEHRDV TLQKVL DSEK LLYVLEADAA IAKHMKHPQG DMIAEDIRQL KERVTNLRGK HKQIYRLAVK
Isotype:	IgG
Cross-Reactivity:	Human, Mouse, Rat
Characteristics:	Polyclonal Antibodies

Target Details

Target:	PPL
---------	-----

Target Details

Alternative Name: PPL ([PPL Products](#))

Background: The protein encoded by this gene is a component of desmosomes and of the epidermal cornified envelope in keratinocytes. The N-terminal domain of this protein interacts with the plasma membrane and its C-terminus interacts with intermediate filaments. Through its rod domain, this protein forms complexes with envoplakin. This protein may serve as a link between the cornified envelope and desmosomes as well as intermediate filaments. AKT1/PKB, a protein kinase mediating a variety of cell growth and survival signaling processes, is reported to interact with this protein, suggesting a possible role for this protein as a localization signal in AKT1-mediated signaling.,PPL,Signal Transduction,Cell Biology & Developmental Biology,Cytoskeleton,Extracellular Matrix,Immunology & Inflammation,PPL

Molecular Weight: 204 kDa

Gene ID: 5493

UniProt: [O60437](#)

Application Details

Application Notes: WB,1:500 - 1:2000,IF,1:50 - 1:100

Comment: HIGH QUALITY

Restrictions: For Research Use only

Handling

Format: Liquid

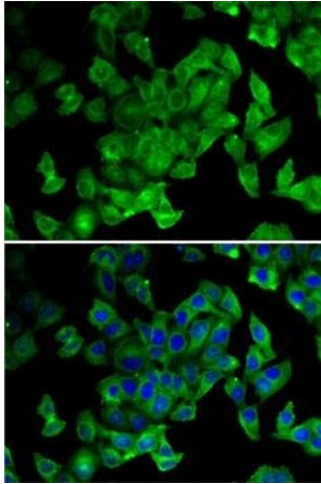
Buffer: PBS with 0.02 % sodium azide,50 % glycerol, pH 7.3.

Preservative: Sodium azide

Precaution of Use: This product contains Sodium azide: a POISONOUS AND HAZARDOUS SUBSTANCE which should be handled by trained staff only.

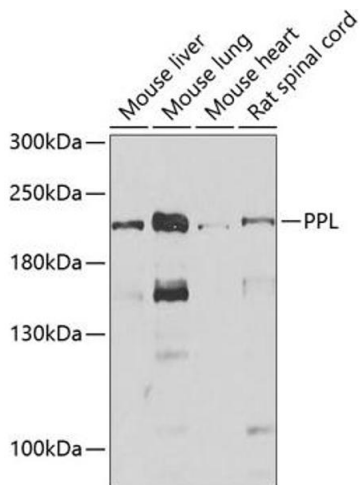
Storage: -20 °C

Storage Comment: Store at -20°C. Avoid freeze / thaw cycles.



Immunofluorescence

Image 1. Immunofluorescence analysis of MCF7 cells using PPL antibody (ABIN6128532, ABIN6146036, ABIN6146038 and ABIN6222699). Blue: DAPI for nuclear staining.



Western Blotting

Image 2. Western blot analysis of extracts of various cell lines, using PPL antibody (ABIN6128532, ABIN6146036, ABIN6146038 and ABIN6222699) at 1:1000 dilution. Secondary antibody: HRP Goat Anti-Rabbit IgG (H+L) (ABIN1684268 and ABIN3020597) at 1:10000 dilution. Lysates/proteins: 25 µg per lane. Blocking buffer: 3 % nonfat dry milk in TBST. Detection: ECL Enhanced Kit (RM00021). Exposure time: 30s.