

Datasheet for ABIN6146039  
**anti-PPM1A antibody (AA 1-382)**

## 4 Images

[Go to Product page](#)

## Overview

Quantity:	100 µL
Target:	PPM1A
Binding Specificity:	AA 1-382
Reactivity:	Human
Host:	Rabbit
Clonality:	Polyclonal
Conjugate:	This PPM1A antibody is un-conjugated
Application:	Western Blotting (WB), Immunofluorescence (IF)

## Product Details

Immunogen:	Recombinant fusion protein containing a sequence corresponding to amino acids 1-382 of human PPM1A (NP_066283.1).
Sequence:	MGAFLDKPKM EKHNAQQGN GLRYGLSSMQ GWRVEMEDAH TAVIGLPSGL ESWSFFAVYD GHAGSQVAKY CCEHLLDHIT NNQDFKGSAG APSVENVKNG IRTGFLEIDE HMRVMSEKKH GADRSGSTAV GVLISPQHTY FINCGDSRGL LCRNRKVHFF TQDHKPSNPL EKERIQNAGG SVMIQRVNGS LAVSRALGDF DYKCVHGKGP TEQLVSPEPE VHDIERSEED DQFIILACDG IWDVMGNEEL CDFVRSRLEV TDDLEKVCNE VVDTCLYKGS RDNMSVILIC FPNAPKVSPE AVKKEAELDK YLECRVEEII KKQGEGVPDL VHVMTLASE NIPSLPPGGE LASKRNVIEA VYNRLNPYKN DDTDSTSTDD MW
Isotype:	IgG
Cross-Reactivity:	Human, Mouse, Rat

## Product Details

Characteristics: Polyclonal Antibodies

## Target Details

Target: PPM1A

Alternative Name: PPM1A ([PPM1A Products](#))

Background: The protein encoded by this gene is a member of the PP2C family of Ser/Thr protein phosphatases. PP2C family members are known to be negative regulators of cell stress response pathways. This phosphatase dephosphorylates, and negatively regulates the activities of, MAP kinases and MAP kinase kinases. It has been shown to inhibit the activation of p38 and JNK kinase cascades induced by environmental stresses. This phosphatase can also dephosphorylate cyclin-dependent kinases, and thus may be involved in cell cycle control. Overexpression of this phosphatase is reported to activate the expression of the tumor suppressor gene TP53/p53, which leads to G2/M cell cycle arrest and apoptosis. Three alternatively spliced transcript variants encoding distinct isoforms have been described.,PPM1A,PP2C-ALPHA,PP2CA,PP2Calpha,Signal Transduction,PPM1A

Molecular Weight: 35 kDa/42 kDa/51 kDa

Gene ID: 5494

UniProt: [P35813](#)

## Application Details

Application Notes: WB,1:500 - 1:2000,IF,1:50 - 1:200

Comment: HIGH QUALITY

Restrictions: For Research Use only

## Handling

Format: Liquid

Buffer: PBS with 0.02 % sodium azide,50 % glycerol, pH 7.3.

Preservative: Sodium azide

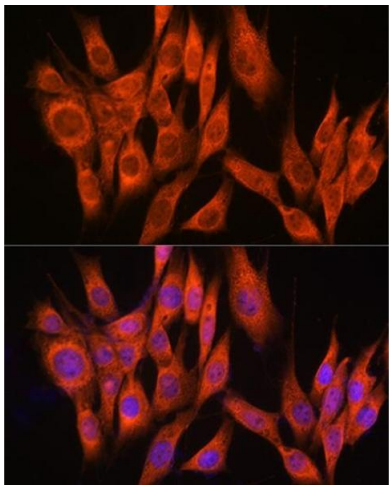
Precaution of Use: This product contains Sodium azide: a POISONOUS AND HAZARDOUS SUBSTANCE which should be handled by trained staff only.

Storage: -20 °C

Handling

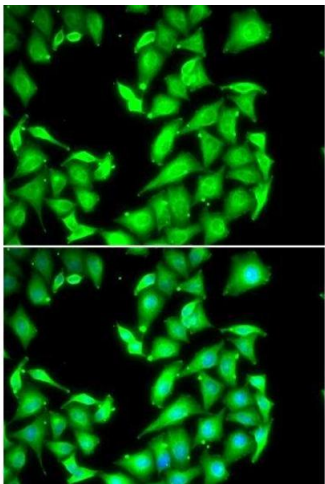
Storage Comment: Store at -20°C. Avoid freeze / thaw cycles.

Images



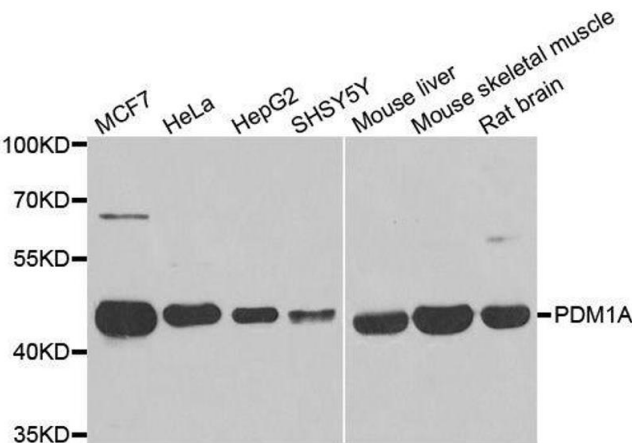
**Immunofluorescence**

**Image 1.** Immunofluorescence analysis of NIH-3T3 cells using PPM1A Rabbit pAb (ABIN6132507, ABIN6146039, ABIN6146040 and ABIN6222411) at dilution of 1:100 (40x lens). Blue: DAPI for nuclear staining.



**Immunofluorescence**

**Image 2.** Immunofluorescence analysis of HeLa cells using PPM1A antibody.



**Western Blotting**

**Image 3.** Western blot analysis of extracts of various cell lines, using PPM1A antibody.

Please check the [product details page](#) for more images. Overall 4 images are available for ABIN6146039.