

Datasheet for ABIN6146049
anti-PPME1 antibody (AA 1-160)



[Go to Product page](#)

1 Image

Overview

Quantity:	100 µL
Target:	PPME1
Binding Specificity:	AA 1-160
Reactivity:	Human
Host:	Rabbit
Clonality:	Polyclonal
Conjugate:	This PPME1 antibody is un-conjugated
Application:	Western Blotting (WB)

Product Details

Immunogen:	Recombinant fusion protein containing a sequence corresponding to amino acids 1-160 of human PPME1 (NP_057231.1).
Sequence:	MSALEKSMHL GRLPSRPPLP GSGGSQSGAK MRMGPGRKRK FSPVPWSQYF ESMEDVEVEN ETGKDTFRVY KSGSEGPVLL LLHGGGHSAL SWAVFTAII SRVQCRIVAL DLRSHGETKV KNPEDLSAET MAKDVGNVVE AMYGDLPPI MLIGHSMGGA
Isotype:	IgG
Cross-Reactivity:	Human, Mouse, Rat
Characteristics:	Polyclonal Antibodies

Target Details

Target:	PPME1
---------	-------

Target Details

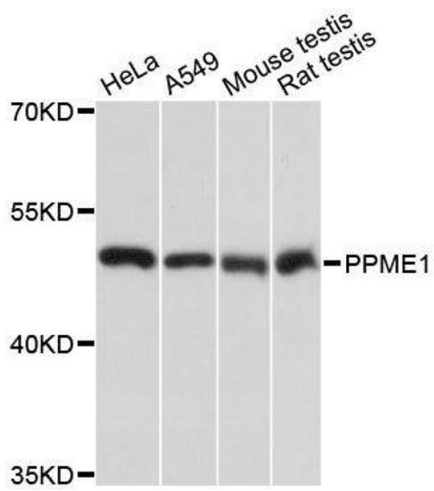
Alternative Name:	PPME1 (PPME1 Products)
Background:	This gene encodes a protein phosphatase methylesterase localized to the nucleus. The encoded protein acts on the protein phosphatase-2A catalytic subunit and supports the ERK pathway through dephosphorylation of regulatory proteins. It plays a role in malignant glioma progression. Alternative splicing results in multiple transcript variants.,PPME1,PME-1,Signal Transduction,PPME1
Molecular Weight:	18 kDa/22 kDa/42 kDa/43 kDa
Gene ID:	51400
UniProt:	Q9Y570
Pathways:	Methionine Biosynthetic Process

Application Details

Application Notes:	WB,1:500 - 1:2000
Comment:	HIGH QUALITY
Restrictions:	For Research Use only

Handling

Format:	Liquid
Buffer:	PBS with 0.02 % sodium azide,50 % glycerol, pH 7.3.
Preservative:	Sodium azide
Precaution of Use:	This product contains Sodium azide: a POISONOUS AND HAZARDOUS SUBSTANCE which should be handled by trained staff only.
Storage:	-20 °C
Storage Comment:	Store at -20°C. Avoid freeze / thaw cycles.



Western Blotting

Image 1. Western blot analysis of extracts of various cell lines, using PPME1 antibody.