

Datasheet for ABIN6146078  
**anti-PPP2CA antibody (AA 1-309)**



[Go to Product page](#)

4 Images

## Overview

Quantity:	100 µL
Target:	PPP2CA
Binding Specificity:	AA 1-309
Reactivity:	Human
Host:	Rabbit
Clonality:	Polyclonal
Conjugate:	This PPP2CA antibody is un-conjugated
Application:	Western Blotting (WB), Immunofluorescence (IF), Immunoprecipitation (IP)

## Product Details

Immunogen:	Recombinant fusion protein containing a sequence corresponding to amino acids 1-309 of human PP2A Catalytic alpha (NP_002706.1).
Sequence:	MDEKVFTKEL DQWIEQLNEC KQLSESQVKS LCEKAKEILT KESNVQEVRC PVTVCGDVHG QFHDLMELFR IGGKSPDTNY LFMGDYVDRG YYSVETVTLL VALKVRYRER ITILRGNHES RQITQVYGFY DECLRKYGNA NWWKYFTDLF DYLPALTALVD GQIFCLHGGL SPSIDTLDHI RALDRLQEV PHEGPMCDLLW SDPDDRGGWG ISPRGAGYTF GQDISETFNH ANGLTLVSRA HQLVMEGYNW CHDRNVVTIF SAPNYCYRCG NQAAIMELDD TLKYSFLQFD PAPRRGEPHV TRRTPDYFL
Isotype:	IgG
Cross-Reactivity:	Human, Mouse, Rat
Characteristics:	Polyclonal Antibodies

## Target Details

---

Target:	PPP2CA
Alternative Name:	PPP2CA ( <a href="#">PPP2CA Products</a> )
Background:	<p>This gene encodes the phosphatase 2A catalytic subunit. Protein phosphatase 2A is one of the four major Ser/Thr phosphatases, and it is implicated in the negative control of cell growth and division. It consists of a common heteromeric core enzyme, which is composed of a catalytic subunit and a constant regulatory subunit, that associates with a variety of regulatory subunits. This gene encodes an alpha isoform of the catalytic subunit.,PPP2CA,PP2Ac,PP2CA,PP2Calpha,RP-C,Cancer,Signal Transduction,G protein signaling,Kinase,Serine/threonine kinases,PI3K-Akt Signaling Pathway,MAPK-Erk Signaling Pathway,Cell Biology &amp; Developmental Biology,Apoptosis,Cell Cycle,Centromere,TGF-b-Smad Signaling Pathway,Wnt/<math>\beta</math>-Catenin Signaling Pathway,ESC Pluripotency and Differentiation,Endocrine &amp; Metabolism,Carbohydrate metabolism,Insulin Receptor Signaling Pathway,Immunology &amp; Inflammation,Phosphatase of Akt,PPP2CA</p>
Molecular Weight:	29 kDa/35 kDa
Gene ID:	5515
UniProt:	<a href="#">P67775</a>
Pathways:	<a href="#">PI3K-Akt Signaling</a> , <a href="#">Mitotic G1-G1/S Phases</a> , <a href="#">Hepatitis C</a> , <a href="#">Toll-Like Receptors Cascades</a>

## Application Details

---

Application Notes:	WB,1:500 - 1:2000,IF,1:50 - 1:200,IP,1:50 - 1:200
Comment:	HIGH QUALITY
Restrictions:	For Research Use only

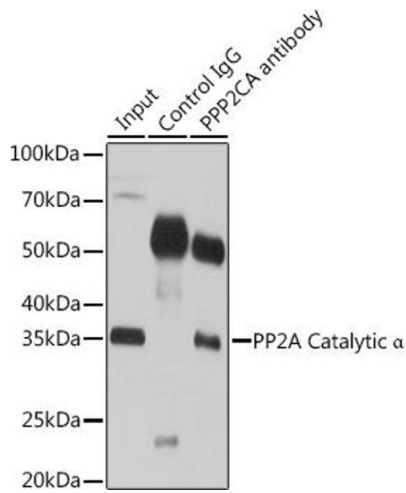
## Handling

---

Format:	Liquid
Buffer:	PBS with 0.02 % sodium azide,50 % glycerol, pH 7.3.
Preservative:	Sodium azide
Precaution of Use:	This product contains Sodium azide: a POISONOUS AND HAZARDOUS SUBSTANCE which should be handled by trained staff only.
Storage:	-20 °C

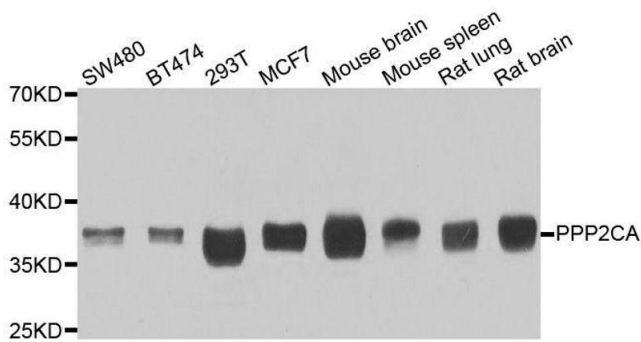
Storage Comment: Store at -20°C. Avoid freeze / thaw cycles.

Images



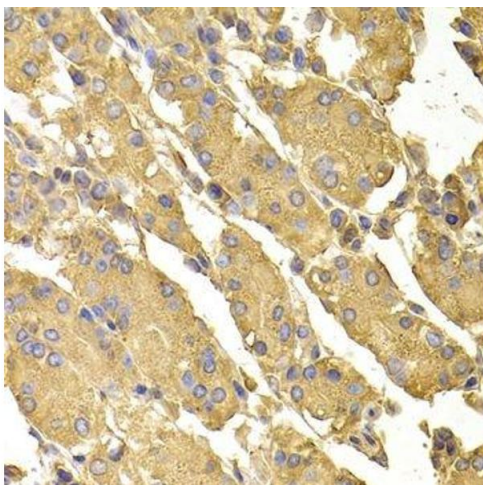
**Immunoprecipitation**

**Image 1.** Immunoprecipitation analysis of 200 µg extracts of 293T cells using 3 µg PP2A Catalytic α antibody . Western blot was performed from the immunoprecipitate using PP2A Catalytic α antibody at a dilution of 1:1000.



**Western Blotting**

**Image 2.** Western blot analysis of extracts of various cell lines, using PPP2CA antibody.



**Immunohistochemistry (Paraffin-embedded Sections)**

**Image 3.** Immunohistochemistry of paraffin-embedded human stomach using PPP2CA antibody.

Please check the [product details page](#) for more images. Overall 4 images are available for ABIN6146078.