

Datasheet for ABIN6146110
anti-PP5 antibody (AA 1-210)



[Go to Product page](#)

2 Images

Overview

Quantity:	100 µL
Target:	PP5 (PPP5C)
Binding Specificity:	AA 1-210
Reactivity:	Human
Host:	Rabbit
Clonality:	Polyclonal
Conjugate:	This PP5 antibody is un-conjugated
Application:	Western Blotting (WB), Immunofluorescence (IF)

Product Details

Immunogen:	Recombinant fusion protein containing a sequence corresponding to amino acids 1-210 of human PPP5C (NP_006238.1).
Sequence:	MAMAEGERTE CAEPPRDEPP ADGALKRAEE LKTQANDYFK AKDYENAIKF YSQAIELNPS NAIYYGNRSL AYLRTCEYGY ALGDATRAIE LDKKYIKGY RRAASNMALG KFRAALRDYE TVVKVKPHDK DAKMKYQECN KIVKQKAER AIAGDEHKRS VVDSLDIESM TIEDEYSGPK LEDGKVTISF MKELMQWYKD QKKLHRKCAY
Isotype:	IgG
Cross-Reactivity:	Human, Mouse, Rat
Characteristics:	Polyclonal Antibodies

Target Details

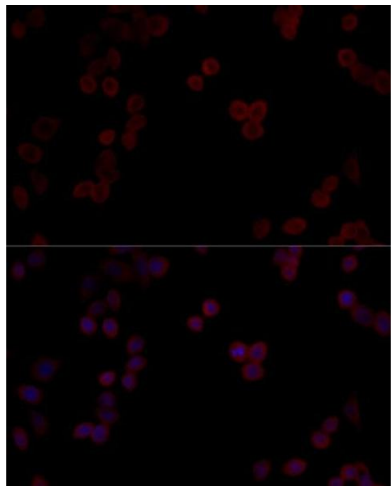
Target:	PP5 (PPP5C)
Alternative Name:	PPP5C (PPP5C Products)
Background:	This gene encodes a serine/threonine phosphatase which is a member of the protein phosphatase catalytic subunit family. Proteins in this family participate in pathways regulated by reversible phosphorylation at serine and threonine residues, many of these pathways are involved in the regulation of cell growth and differentiation. The product of this gene has been shown to participate in signaling pathways in response to hormones or cellular stress, and elevated levels of this protein may be associated with breast cancer development. Alternative splicing results in multiple transcript variants.,PPP5C,PP5,PPP5,PPT,Epigenetics & Nuclear Signaling,Kinase,Cell Biology & Developmental Biology,Cell Cycle,PPP5C
Molecular Weight:	56 kDa
Gene ID:	5536
UniProt:	P53041

Application Details

Application Notes:	WB,1:500 - 1:2000,IF,1:50 - 1:200
Comment:	HIGH QUALITY
Restrictions:	For Research Use only

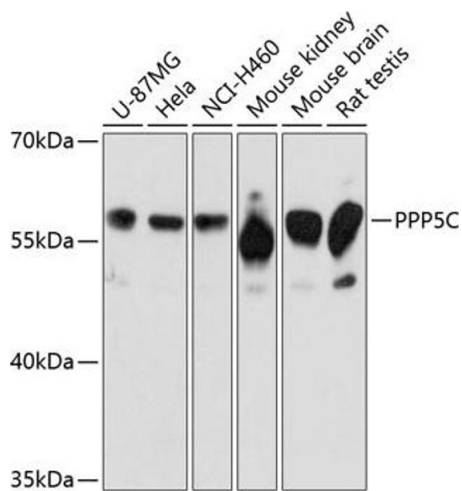
Handling

Format:	Liquid
Buffer:	PBS with 0.02 % sodium azide,50 % glycerol, pH 7.3.
Preservative:	Sodium azide
Precaution of Use:	This product contains Sodium azide: a POISONOUS AND HAZARDOUS SUBSTANCE which should be handled by trained staff only.
Storage:	-20 °C
Storage Comment:	Store at -20°C. Avoid freeze / thaw cycles.



Immunofluorescence

Image 1. Immunofluorescence analysis of HeLa cells using PPP5C Polyclonal Antibody (ABIN6128492, ABIN6146110, ABIN6146111 and ABIN6215406) at dilution of 1:100 (40x lens). Blue: DAPI for nuclear staining.



Western Blotting

Image 2. Western blot analysis of extracts of various cell lines, using PPP5C Antibody (ABIN6128492, ABIN6146110, ABIN6146111 and ABIN6215406) at 1:3000 dilution. Secondary antibody: HRP Goat Anti-Rabbit IgG (H+L) (ABIN1684268 and ABIN3020597) at 1:10000 dilution. Lysates/proteins: 25 µg per lane. Blocking buffer: 3 % nonfat dry milk in TBST. Detection: ECL Basic Kit (RM00020). Exposure time: 60s.