



[Go to Product page](#)

Datasheet for ABIN6146114  
**anti-SAPS2 antibody (AA 640-959)**

1 Image

Overview

Quantity:	100 µL
Target:	SAPS2
Binding Specificity:	AA 640-959
Reactivity:	Human
Host:	Rabbit
Clonality:	Polyclonal
Conjugate:	This SAPS2 antibody is un-conjugated
Application:	Western Blotting (WB)

Product Details

Immunogen:	Recombinant fusion protein containing a sequence corresponding to amino acids 640-959 of human PPP6R2 (NP_001229827.1).
Sequence:	EDSDTRCAAR VMARPRFGAP HASESCSKNG PERGGQDGKA SLEAHRDAPG AGAPPAPGKK EAPPVEGDSE GAMWTAVFDE PANSTPTAPG VVRDVGSSVW AAGTSAPEEK GWAKFTDFQP FCCSESGPRC SSPVDTECSH AEGSRSQGPE KAFSPASPCA WNVCVTRKAP LLASDSSSSG GSHSEGDQK AASAMDAVSR GPGREAPPLP TVARTEEAVG RVGCADSRLL SPACPAPKEV TAAPAVAVPP EATVAITTAL SKAGPAIPTP AVSSALAVAV PLGPIMAVTA APAMVATLGT VTKDGKTDAP PEGAALNGPV
Isotype:	IgG
Cross-Reactivity:	Human
Characteristics:	Polyclonal Antibodies

## Target Details

---

Target:	SAPS2
Alternative Name:	PPP6R2 ( <a href="#">SAPS2 Products</a> )
Background:	The protein encoded by this gene is a regulatory protein for the protein phosphatase-6 catalytic subunit. Together, these proteins act as a significant T-loop phosphatase for Aurora A, an essential mitotic kinase. Loss of function of either the regulatory or catalytic subunit of protein phosphatase-6 interferes with spindle formation and chromosome alignment.,PPP6R2,KIAA0685,PP6R2,SAP190,SAPS2,Signal Transduction,PPP6R2
Molecular Weight:	98 kDa/101 kDa/104 kDa
Gene ID:	9701
UniProt:	<a href="#">075170</a>

## Application Details

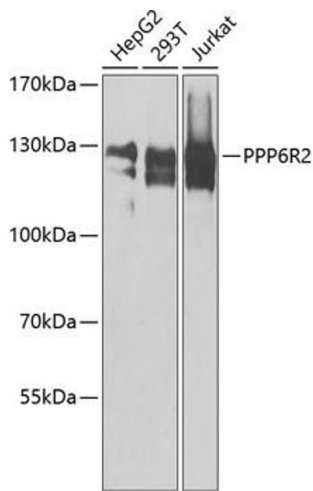
---

Application Notes:	WB,1:500 - 1:2000
Comment:	HIGH QUALITY
Restrictions:	For Research Use only

## Handling

---

Format:	Liquid
Buffer:	PBS with 0.02 % sodium azide,50 % glycerol, pH 7.3.
Preservative:	Sodium azide
Precaution of Use:	This product contains Sodium azide: a POISONOUS AND HAZARDOUS SUBSTANCE which should be handled by trained staff only.
Storage:	-20 °C
Storage Comment:	Store at -20°C. Avoid freeze / thaw cycles.



### Western Blotting

**Image 1.** Western blot analysis of extracts of various cell lines, using PPP6R2 antibody at 1:1000 dilution. Secondary antibody: HRP Goat Anti-Rabbit IgG (H+L) (ABIN1684268 and ABIN3020597) at 1:10000 dilution. Lysates/proteins: 25 µg per lane. Blocking buffer: 3% nonfat dry milk in TBST. Detection: ECL Enhanced Kit (RM00021). Exposure time: 10s.