

Datasheet for ABIN6146126
anti-PRDM1 antibody (AA 1-240)



[Go to Product page](#)

1 Image

Overview

Quantity:	100 µL
Target:	PRDM1
Binding Specificity:	AA 1-240
Reactivity:	Human
Host:	Rabbit
Clonality:	Polyclonal
Conjugate:	This PRDM1 antibody is un-conjugated
Application:	Western Blotting (WB)

Product Details

Immunogen:	Recombinant fusion protein containing a sequence corresponding to amino acids 1-240 of human PRDM1 (NP_878911.1).
Sequence:	MEKIYSRGEL HHFIDGFNEE KSNWMRYVNP AHSPREQNLA ACQNGMNIYF YTIKPIPANQ ELLVWYCRDF AERLHYPYPG ELTMMNLTQT QSSLKQPSTE KNELCPKNVP KREYSVKEIL KLDSNPSK GK DLYRSNISPL TSEKLDLDFR RRGSPPEMPFY PRVVYPIRAP LPEDFLKASL AYGIERPTYI TRSPISSSTT PPSARSSPD QSLKSSSPHS SPGNTVSPVG PGSQEHRDSY
Isotype:	IgG
Cross-Reactivity:	Human, Mouse
Characteristics:	Polyclonal Antibodies

Target Details

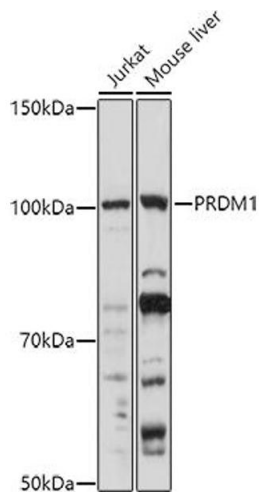
Target:	PRDM1
Alternative Name:	PRDM1 (PRDM1 Products)
Background:	This gene encodes a protein that acts as a repressor of beta-interferon gene expression. The protein binds specifically to the PRDI (positive regulatory domain I element) of the beta-IFN gene promoter. Transcription of this gene increases upon virus induction. Two alternatively spliced transcript variants that encode different isoforms have been reported.,PRDM1,BLIMP1,PRDI-BF1,Epigenetics & Nuclear Signaling,Immunology & Inflammation,Cytokines,Interferons,Cell Intrinsic Innate Immunity Signaling Pathway,PRDM1
Molecular Weight:	76 kDa/87 kDa/91 kDa
Gene ID:	639
UniProt:	O75626
Pathways:	Regulation of Muscle Cell Differentiation

Application Details

Application Notes:	WB,1:500 - 1:2000
Restrictions:	For Research Use only

Handling

Format:	Liquid
Buffer:	PBS with 0.02 % sodium azide,50 % glycerol, pH 7.3.
Preservative:	Sodium azide
Precaution of Use:	This product contains Sodium azide: a POISONOUS AND HAZARDOUS SUBSTANCE which should be handled by trained staff only.
Storage:	-20 °C
Storage Comment:	Store at -20°C. Avoid freeze / thaw cycles.



Western Blotting

Image 1. Western blot analysis of extracts of various cell lines, using (ABIN6128500, ABIN6146126, ABIN6146127 and ABIN6219111) at 1:1000 dilution. Secondary antibody: HRP Goat Anti-Rabbit IgG (H+L) (ABIN1684268 and ABIN3020597) at 1:10000 dilution. Lysates/proteins: 25 µg per lane. Blocking buffer: 3% nonfat dry milk in TBST. Detection: ECL Enhanced Kit (RM00021). Exposure time: 180s.