



[Go to Product page](#)

Datasheet for ABIN614613

anti-Hemoglobin Subunit beta antibody (AA 38-148)

2 Images

Overview

Quantity:	50 µg
Target:	Hemoglobin Subunit beta (HBB)
Binding Specificity:	AA 38-148
Reactivity:	Human
Host:	Mouse
Clonality:	Monoclonal
Conjugate:	This Hemoglobin Subunit beta antibody is un-conjugated
Application:	Western Blotting (WB), Immunohistochemistry (Paraffin-embedded Sections) (IHC (p)), Enzyme Immunoassay (EIA)

Product Details

Immunogen:	Recombinant protein, HBB (AAH07075, 38 a.a. ~ 148 a.a) partial recombinant protein with GST tag. Genename: HBB
Clone:	7B12
Isotype:	IgG1
Specificity:	This antibody recognizes Hemoglobin Beta (HBB).
Purification:	Protein A Chromatography

Target Details

Target:	Hemoglobin Subunit beta (HBB)
---------	-------------------------------

Target Details

Alternative Name: Hemoglobin beta Chain ([HBB Products](#))

Target Type: Viral Protein

Background: The alpha (HBA) and beta (HBB) loci determine the structure of the 2 types of polypeptide chains in adult hemoglobin, Hb A. The normal adult hemoglobin tetramer consists of two alpha chains and two beta chains. Mutant beta globin that sickles causes sickle cell anemia. Absence of beta chain causes beta-zero-thalassemia. Reduced amounts of detectable beta globin causes beta-plus-thalassemia. The order of the genes in the beta-globin cluster is 5'-epsilon -- gamma-G -- gamma-A -- delta -- beta--3'. Synonyms: Beta-globin, HBB

Gene ID: 3043

NCBI Accession: [NP_000509](#)

UniProt: [P68871](#)

Application Details

Application Notes: Optimal working dilution should be determined by the investigator.

Restrictions: For Research Use only

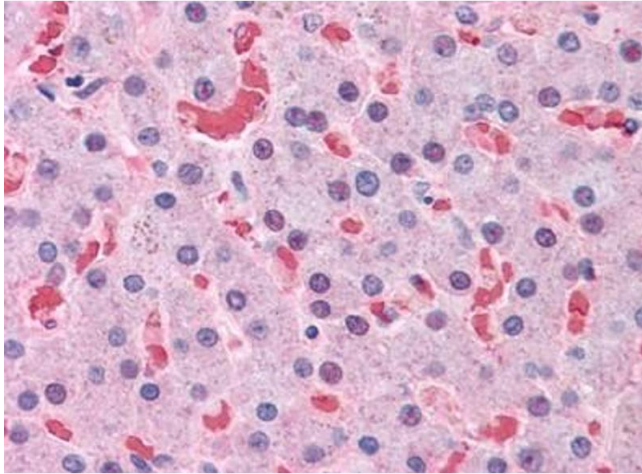
Handling

Concentration: 1.0 mg/mL

Buffer: PBS, pH 7.2

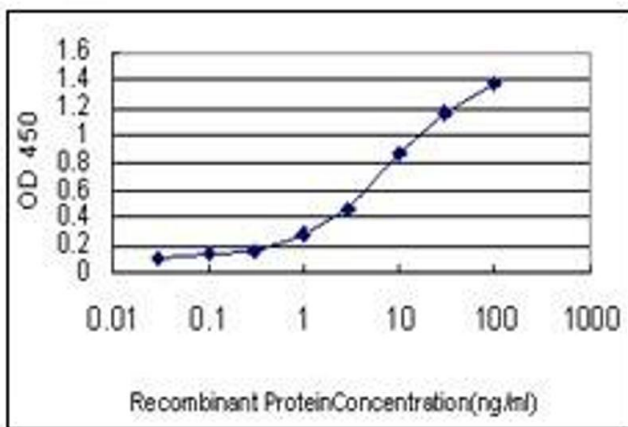
Handling Advice: Avoid repeated freezing and thawing.

Storage: -20 °C



Immunohistochemistry

Image 1.



ELISA

Image 2.