



[Go to Product page](#)

Datasheet for ABIN6146132
anti-PRDM14 antibody (AA 1-260)

1 Image

Overview

Quantity:	100 µL
Target:	PRDM14
Binding Specificity:	AA 1-260
Reactivity:	Human
Host:	Rabbit
Clonality:	Polyclonal
Conjugate:	This PRDM14 antibody is un-conjugated
Application:	Western Blotting (WB), Immunohistochemistry (IHC)

Product Details

Immunogen:	Recombinant fusion protein containing a sequence corresponding to amino acids 1-260 of human PRDM14 (NP_078780.1).
Sequence:	MALPRPSEAV PQDKVCYPPE SSPQNLAAYY TPFPSYGHYR NSLATVEEDF QPFRQLEAAA SAAPAMPPFP FRMAPLLSP GLGLQREPLY DLPWYSLKPP WYPIPHVPRE VPPFLSSSHE YAGASSEDLG HQIIGGDNES GPCCGPDTLI PPPPADASLL PEGLRTSQLL PCSPSKQSED GPKPSNQEKG SPARFQFTEE DLHFVLYGVT PSLEHPASLH HAISGLLVPP DSSGSDSLPQ TLDKDSLQLP EGLCLMQTVF
Isotype:	IgG
Cross-Reactivity:	Human, Mouse, Rat
Characteristics:	Polyclonal Antibodies

Target Details

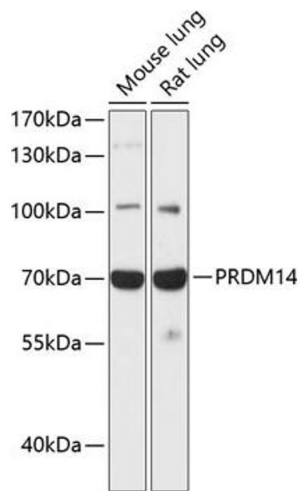
Target:	PRDM14
Alternative Name:	PRDM14 (PRDM14 Products)
Background:	This gene encodes a member of the PRDI-BF1 and RIZ homology domain containing (PRDM) family of transcriptional regulators. The encoded protein may possess histone methyltransferase activity and plays a critical role in cell pluripotency by suppressing the expression of differentiation marker genes. Expression of this gene may play a role in breast cancer.,PRDM14,PFM11,Epigenetics & Nuclear Signaling,PRDM14
Molecular Weight:	64 kDa
Gene ID:	63978
UniProt:	Q9GZV8

Application Details

Application Notes:	WB,1:500 - 1:2000,IHC,1:50 - 1:200
Restrictions:	For Research Use only

Handling

Format:	Liquid
Buffer:	PBS with 0.02 % sodium azide,50 % glycerol, pH 7.3.
Preservative:	Sodium azide
Precaution of Use:	This product contains Sodium azide: a POISONOUS AND HAZARDOUS SUBSTANCE which should be handled by trained staff only.
Storage:	-20 °C
Storage Comment:	Store at -20°C. Avoid freeze / thaw cycles.



Western Blotting

Image 1. Western blot analysis of extracts of various cell lines, using PRDM14 antibody (ABIN6128495, ABIN6146132, ABIN6146135 and ABIN6217736) at 1:1000 dilution. Secondary antibody: HRP Goat Anti-Rabbit IgG (H+L) (ABIN1684268 and ABIN3020597) at 1:10000 dilution. Lysates/proteins: 25 µg per lane. Blocking buffer: 3% nonfat dry milk in TBST. Detection: ECL Basic Kit (RM00020). Exposure time: 90s.