

Datasheet for ABIN6146197

anti-PKC alpha antibody (AA 523-672)



[Go to Product page](#)

1 Image

Overview

Quantity:	100 µL
Target:	PKC alpha (PKCa)
Binding Specificity:	AA 523-672
Reactivity:	Human
Host:	Rabbit
Clonality:	Polyclonal
Conjugate:	This PKC alpha antibody is un-conjugated
Application:	Western Blotting (WB)

Product Details

Immunogen:	Recombinant fusion protein containing a sequence corresponding to amino acids 523-672 of human PKC alpha (NP_002728.1).
Sequence:	AYGVLLYEML AGQPPFDGED EDELFSIME HNVSYPKSLS KEAVSICKGL MTKHPAKRLG CGPEGERDVR EHAFFRRIDW EKLENREIQP PFKPKVCGKG AENFDKFFTR GQPVLTPPDQ LVIANIDQSD FEGFSYVNPQ FVHPILQSAV
Isotype:	IgG
Cross-Reactivity:	Human, Mouse, Rat
Characteristics:	Polyclonal Antibodies

Target Details

Target:	PKC alpha (PKCa)
---------	------------------

Target Details

Alternative Name:	PRKCA (PKCa Products)
Background:	<p>Protein kinase C (PKC) is a family of serine- and threonine-specific protein kinases that can be activated by calcium and the second messenger diacylglycerol. PKC family members phosphorylate a wide variety of protein targets and are known to be involved in diverse cellular signaling pathways. PKC family members also serve as major receptors for phorbol esters, a class of tumor promoters. Each member of the PKC family has a specific expression profile and is believed to play a distinct role in cells. The protein encoded by this gene is one of the PKC family members. This kinase has been reported to play roles in many different cellular processes, such as cell adhesion, cell transformation, cell cycle checkpoint, and cell volume control. Knockout studies in mice suggest that this kinase may be a fundamental regulator of cardiac contractility and Ca(2+) handling in myocytes.,PRKCA,AAG6,PKC- alpha,PKCA,PRKACA,PKC alpha,Epigenetics & Nuclear Signaling,Chromatin Modifying Enzymes,Phosphorylation,Cancer,Signal Transduction,G protein signaling,G2/M DNA Damage Checkpoint,Kinase,Serine/threonine kinases,mTOR Signaling Pathway,Phospholipase Signaling Pathway,Protein Kinase C Signaling Pathway,ErbB-HER Signaling Pathway,MAPK-Erk Signaling Pathway,Cell Biology & Developmental Biology,Apoptosis,Mitochondrial Control of Apoptosis,Inhibition of Apoptosis,Cell Adhesion,Cytoskeleton,Microtubules,Actins,TGF-b-Smad Signaling Pathway,Endocrine & Metabolism,Immunology & Inflammation,B Cell Receptor Signaling Pathway,Neuroscience,Amyloid Plaque and Neurofibrillary Tangle Formation in Alzheimer's Disease,Neurodegenerative Diseases Markers,Cardiovascular,Heart,Hypertrophy,PRKCA</p>
Molecular Weight:	76 kDa
Gene ID:	5578
UniProt:	P17252
Pathways:	WNT Signaling , TCR Signaling , EGFR Signaling Pathway , Neurotrophin Signaling Pathway , Thyroid Hormone Synthesis , cAMP Metabolic Process , Myometrial Relaxation and Contraction , Cell-Cell Junction Organization , Regulation of G-Protein Coupled Receptor Protein Signaling , G-protein mediated Events , Signaling Events mediated by VEGFR1 and VEGFR2 , Interaction of EGFR with phospholipase C-gamma , Thromboxane A2 Receptor Signaling , VEGFR1 Specific Signals , VEGF Signaling

Application Details

Application Notes:	WB,1:500 - 1:2000
--------------------	-------------------

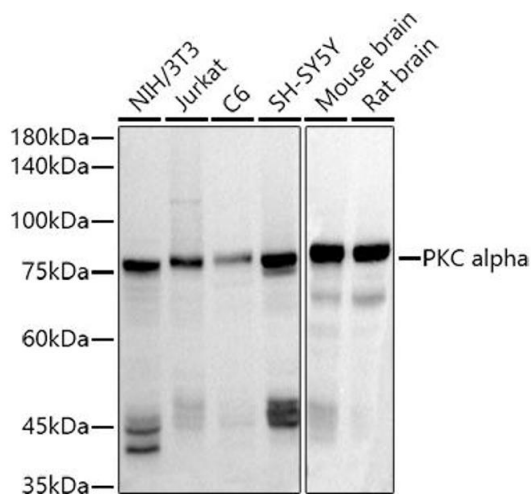
Application Details

Restrictions: For Research Use only

Handling

Format:	Liquid
Buffer:	PBS with 0.02 % sodium azide,50 % glycerol, pH 7.3.
Preservative:	Sodium azide
Precaution of Use:	This product contains Sodium azide: a POISONOUS AND HAZARDOUS SUBSTANCE which should be handled by trained staff only.
Storage:	-20 °C
Storage Comment:	Store at -20°C. Avoid freeze / thaw cycles.

Images



Western Blotting

Image 1. Western blot analysis of extracts of various cell lines, using PKC alpha antibody (ABIN6128461, ABIN6146197, ABIN6146198 and ABIN6217299) at 1:1000 dilution. Secondary antibody: HRP Goat Anti-Rabbit IgG (H+L) (ABIN1684268 and ABIN3020597) at 1:10000 dilution. Lysates/proteins: 25 µg per lane. Blocking buffer: 3 % nonfat dry milk in TBST. Detection: ECL Basic Kit (RM00020). Exposure time: 10s.