



[Go to Product page](#)

Datasheet for ABIN6146211
anti-PKC zeta antibody (AA 453-592)

4 Images

Overview

Quantity:	100 µL
Target:	PKC zeta (PRKCZ)
Binding Specificity:	AA 453-592
Reactivity:	Human
Host:	Rabbit
Clonality:	Polyclonal
Conjugate:	This PKC zeta antibody is un-conjugated
Application:	Western Blotting (WB), Immunofluorescence (IF)

Product Details

Immunogen:	Recombinant fusion protein containing a sequence corresponding to amino acids 453-592 of human PKC zeta (NP_002735.3).
Sequence:	IITDNPDMNT EDYLFQVILE KPIRIPRFLS VKASHVLKGF LNKDPKERLG CRPQTGFSDI KSHAFFRSID WDLLEKKQAL PPFQPQITDD YGLDNFDTQF TSEPVLTPD DEDAIKRIDQ SEFEGFEYIN PLLLSTEEVS
Isotype:	IgG
Cross-Reactivity:	Human, Mouse, Rat
Characteristics:	Polyclonal Antibodies

Target Details

Target:	PKC zeta (PRKCZ)
---------	------------------

Target Details

Alternative Name: PRKCZ ([PRKCZ Products](#))

Background: Protein kinase C (PKC) zeta is a member of the PKC family of serine/threonine kinases which are involved in a variety of cellular processes such as proliferation, differentiation and secretion. Unlike the classical PKC isoenzymes which are calcium-dependent, PKC zeta exhibits a kinase activity which is independent of calcium and diacylglycerol but not of phosphatidylserine. Furthermore, it is insensitive to typical PKC inhibitors and cannot be activated by phorbol ester. Unlike the classical PKC isoenzymes, it has only a single zinc finger module. These structural and biochemical properties indicate that the zeta subspecies is related to, but distinct from other isoenzymes of PKC. Alternative splicing results in multiple transcript variants encoding different isoforms.,PRKCZ,PKC-ZETA,PKC2,Signal Transduction,G protein signaling,G2/M DNA Damage Checkpoint,Kinase,Serine/threonine kinases,Phospholipase Signaling Pathway,Protein Kinase C Signaling Pathway,ErbB-HER Signaling Pathway,MAPK-Erk Signaling Pathway,Cell Biology & Developmental Biology,Apoptosis,Mitochondrial Control of Apoptosis,Inhibition of Apoptosis,TGF-b-Smad Signaling Pathway,Endocrine & Metabolism,Insulin Receptor Signaling Pathway,Immunology & Inflammation,B Cell Receptor Signaling Pathway,NF-kB Signaling Pathway,PRKCZ

Molecular Weight: 46 kDa/56 kDa/67 kDa

Gene ID: 5590

UniProt: [Q05513](#)

Pathways: [NF-kappaB Signaling](#), [RTK Signaling](#), [Myometrial Relaxation and Contraction](#), [Regulation of Leukocyte Mediated Immunity](#), [Positive Regulation of Immune Effector Process](#), [Synaptic Membrane](#), [Production of Molecular Mediator of Immune Response](#), [CXCR4-mediated Signaling Events](#), [Thromboxane A2 Receptor Signaling](#)

Application Details

Application Notes: WB,1:500 - 1:1000,IF,1:50 - 1:200

Comment: HIGH QUALITY

Restrictions: For Research Use only

Handling

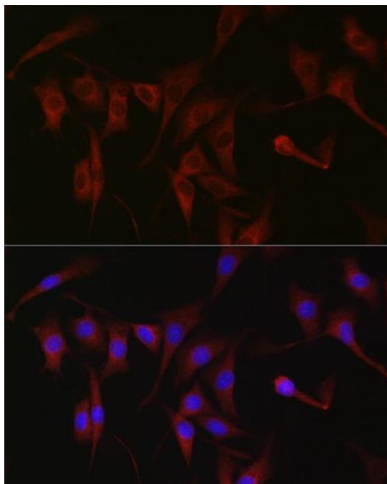
Format: Liquid

Buffer: PBS with 0.02 % sodium azide,50 % glycerol, pH 7.3.

Handling

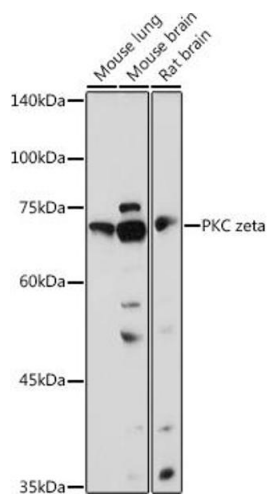
Preservative:	Sodium azide
Precaution of Use:	This product contains Sodium azide: a POISONOUS AND HAZARDOUS SUBSTANCE which should be handled by trained staff only.
Storage:	-20 °C
Storage Comment:	Store at -20°C. Avoid freeze / thaw cycles.

Images



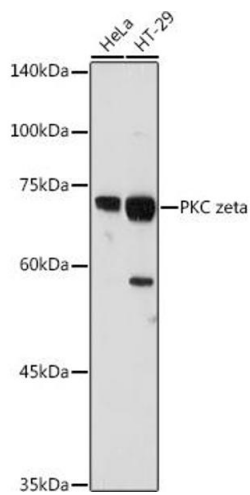
Immunofluorescence

Image 1. Immunofluorescence analysis of NIH/3T3 cells using PKC zeta Rabbit pAb (ABIN6128468, ABIN6146211, ABIN6146213 and ABIN6221376) at dilution of 1:100 (40x lens). Blue: DAPI for nuclear staining.



Western Blotting

Image 2. Western blot analysis of extracts of various cell lines, using PKC zeta antibody (ABIN6128468, ABIN6146211, ABIN6146213 and ABIN6221376) at 1:1000 dilution. Secondary antibody: HRP Goat Anti-Rabbit IgG (H+L) (ABIN1684268 and ABIN3020597) at 1:10000 dilution. Lysates/proteins: 25 µg per lane. Blocking buffer: 3 % nonfat dry milk in TBST. Detection: ECL Basic Kit (RM00020). Exposure time: 90s.



Western Blotting

Image 3. Western blot analysis of extracts of various cell lines, using PKC zeta antibody (ABIN6128468, ABIN6146211, ABIN6146213 and ABIN6221376) at 1:1000 dilution. Secondary antibody: HRP Goat Anti-Rabbit IgG (H+L) (ABIN1684268 and ABIN3020597) at 1:10000 dilution. Lysates/proteins: 25 µg per lane. Blocking buffer: 3 % nonfat dry milk in TBST. Detection: ECL Basic Kit (RM00020). Exposure time: 30s.

Please check the [product details page](#) for more images. Overall 4 images are available for ABIN6146211.