



[Go to Product page](#)

Datasheet for ABIN6146262
anti-PRPF31 antibody (AA 1-200)

4 Images

Overview

| | |
|----------------------|---|
| Quantity: | 100 µL |
| Target: | PRPF31 |
| Binding Specificity: | AA 1-200 |
| Reactivity: | Human |
| Host: | Rabbit |
| Clonality: | Polyclonal |
| Conjugate: | This PRPF31 antibody is un-conjugated |
| Application: | Western Blotting (WB), Immunohistochemistry (IHC) |

Product Details

| | |
|-------------------|--|
| Immunogen: | Recombinant fusion protein containing a sequence corresponding to amino acids 1-200 of human PRPF31 (NP_056444.3). |
| Sequence: | MSLADELLAD LEEAEEEEEG GSYGEEEEEP AIEDVQEETQ LDLSGDSVKT IAKLWDSKMF AEIMMKIEEY ISKQAKASEV MGPVEAAPEY RVIVDANNLT VEIENELNII HKFIRDKYSK RFPELESLVP NALDYIRTVK ELGNSLDKCK NNENLQQILT NATIMVVSVT ASTTQGQQLS EEELERLEEA CDMALELNAS |
| Isotype: | IgG |
| Cross-Reactivity: | Human, Mouse, Rat |
| Characteristics: | Polyclonal Antibodies |

Target Details

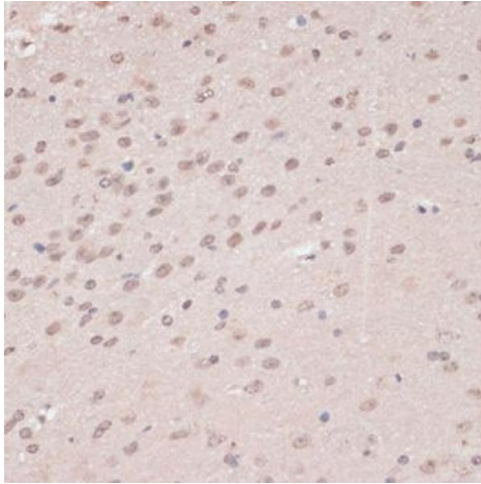
| | |
|-------------------|--|
| Target: | PRPF31 |
| Alternative Name: | PRPF31 (PRPF31 Products) |
| Background: | This gene encodes a component of the spliceosome complex and is one of several retinitis pigmentosa-causing genes. When the gene product is added to the spliceosome complex, activation occurs.,PRPF31,NY-BR-99,PRP31,RP11,SNRNP61,Epigenetics & Nuclear Signaling,RNA Binding,PRPF31 |
| Molecular Weight: | 30 kDa/40 kDa/54 kDa/55 kDa |
| Gene ID: | 26121 |
| UniProt: | Q8WWY3 |
| Pathways: | Ribonucleoprotein Complex Subunit Organization |

Application Details

| | |
|--------------------|------------------------------------|
| Application Notes: | WB,1:500 - 1:2000,IHC,1:50 - 1:100 |
| Restrictions: | For Research Use only |

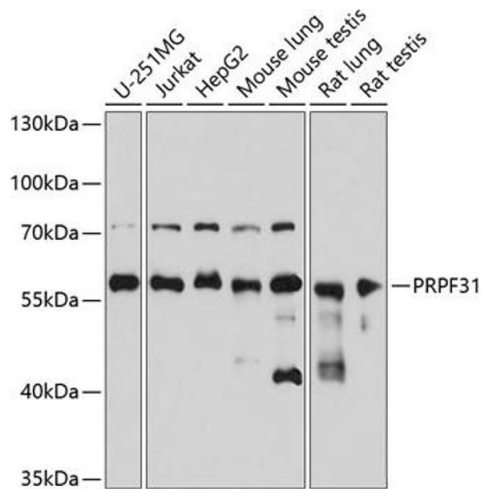
Handling

| | |
|--------------------|--|
| Format: | Liquid |
| Buffer: | PBS with 0.02 % sodium azide,50 % glycerol, pH 7.3. |
| Preservative: | Sodium azide |
| Precaution of Use: | This product contains Sodium azide: a POISONOUS AND HAZARDOUS SUBSTANCE which should be handled by trained staff only. |
| Storage: | -20 °C |
| Storage Comment: | Store at -20°C. Avoid freeze / thaw cycles. |



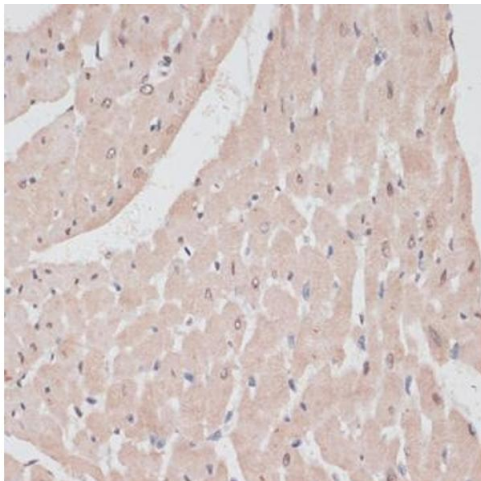
Immunohistochemistry

Image 1. Immunohistochemistry of paraffin-embedded mouse brain using PRPF31 antibody (ABIN6132996, ABIN6146262, ABIN6146264 and ABIN6221399) at dilution of 1:100 (40x lens). Perform microwave antigen retrieval with 10 mM PBS buffer pH 7.2 before commencing with IHC staining protocol.



Western Blotting

Image 2. Western blot analysis of extracts of various cell lines, using PRPF31 antibody (ABIN6132996, ABIN6146262, ABIN6146264 and ABIN6221399) at 1:3000 dilution. Secondary antibody: HRP Goat Anti-Rabbit IgG (H+L) (ABIN1684268 and ABIN3020597) at 1:10000 dilution. Lysates/proteins: 25 µg per lane. Blocking buffer: 3 % nonfat dry milk in TBST. Detection: ECL Basic Kit (RM00020). Exposure time: 90s.



Immunohistochemistry

Image 3. Immunohistochemistry of paraffin-embedded rat heart using PRPF31 antibody (ABIN6132996, ABIN6146262, ABIN6146264 and ABIN6221399) at dilution of 1:100 (40x lens). Perform microwave antigen retrieval with 10 mM PBS buffer pH 7.2 before commencing with IHC staining protocol.

Please check the [product details page](#) for more images. Overall 4 images are available for ABIN6146262.