



[Go to Product page](#)

Datasheet for ABIN6146268
anti-PRPF8 antibody (AA 1-100)

5 Images

Overview

Quantity:	100 µL
Target:	PRPF8
Binding Specificity:	AA 1-100
Reactivity:	Human
Host:	Rabbit
Clonality:	Polyclonal
Conjugate:	This PRPF8 antibody is un-conjugated
Application:	Western Blotting (WB), Immunohistochemistry (IHC), Immunoprecipitation (IP), Immunofluorescence (IF)

Product Details

Immunogen:	A synthetic peptide corresponding to a sequence within amino acids 1-100 of human PRPF8 (NP_006436.3).
Sequence:	MAGVFPYRGP GNPVPGPLAP LPDYMSEEKL QEKARKWQQL QAKRYAEK RK FGFVDAQKED MPPEHVRKII RDHGDMTNRK FRHDKRVYLG ALKYMPHAVL
Isotype:	IgG
Cross-Reactivity:	Human, Mouse, Rat
Characteristics:	Polyclonal Antibodies

Target Details

Target:	PRPF8
---------	-------

Target Details

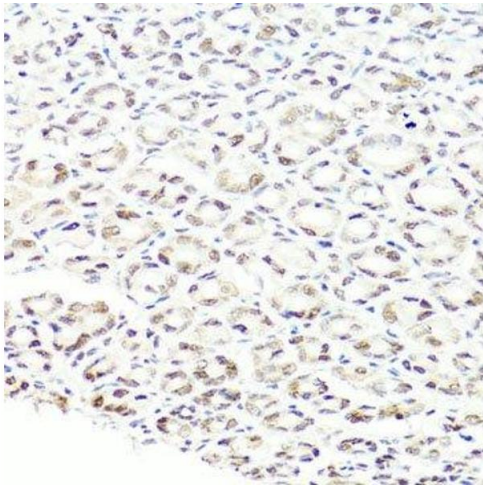
Alternative Name:	PRPF8 (PRPF8 Products)
Background:	Pre-mRNA splicing occurs in 2 sequential transesterification steps. The protein encoded by this gene is a component of both U2- and U12-dependent spliceosomes, and found to be essential for the catalytic step II in pre-mRNA splicing process. It contains several WD repeats, which function in protein-protein interactions. This protein has a sequence similarity to yeast Prp8 protein. This gene is a candidate gene for autosomal dominant retinitis pigmentosa.,PRPF8,HPRP8,PRP8,PRPC8,RP13,SNRNP220,PRPF8,Epigenetics & Nuclear Signaling,RNA Binding,Neuroscience,PRPF8
Molecular Weight:	273 kDa
Gene ID:	10594
UniProt:	Q6P2Q9

Application Details

Application Notes:	WB,1:500 - 1:1000,IHC,1:50 - 1:100,IF,1:50 - 1:100,IP,1:50 - 1:100
Comment:	HIGH QUALITY
Restrictions:	For Research Use only

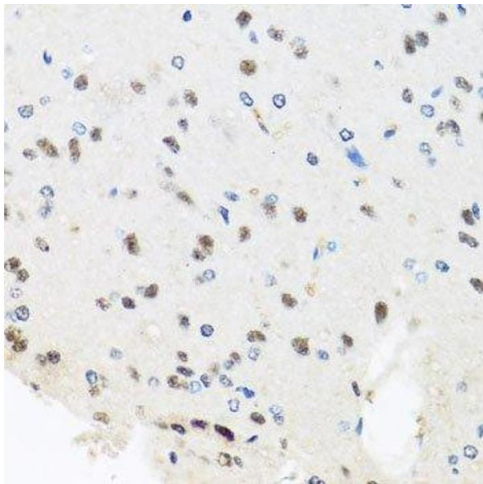
Handling

Format:	Liquid
Buffer:	PBS with 0.02 % sodium azide,50 % glycerol, pH 7.3.
Preservative:	Sodium azide
Precaution of Use:	This product contains Sodium azide: a POISONOUS AND HAZARDOUS SUBSTANCE which should be handled by trained staff only.
Storage:	-20 °C
Storage Comment:	Store at -20°C. Avoid freeze / thaw cycles.



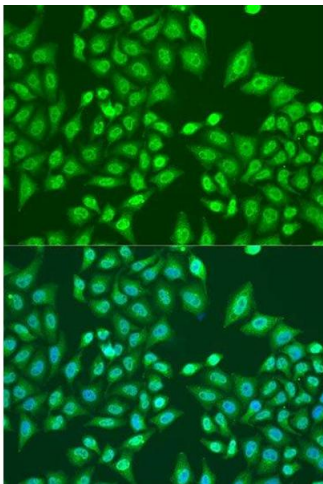
Immunohistochemistry (Paraffin-embedded Sections)

Image 1. Immunohistochemistry of paraffin-embedded mouse stomach using PRPF8 antibody.



Immunohistochemistry (Paraffin-embedded Sections)

Image 2. Immunohistochemistry of paraffin-embedded rat brain using PRPF8 antibody.



Immunofluorescence

Image 3. Immunofluorescence analysis of U2OS cells using PRPF8 antibody.

Please check the [product details page](#) for more images. Overall 5 images are available for ABIN6146268.