

Datasheet for ABIN6146307
anti-PSMA6 antibody (AA 1-246)[Go to Product page](#)

4 Images

Overview

Quantity:	100 µL
Target:	PSMA6
Binding Specificity:	AA 1-246
Reactivity:	Human
Host:	Rabbit
Clonality:	Polyclonal
Conjugate:	This PSMA6 antibody is un-conjugated
Application:	Western Blotting (WB), Immunofluorescence (IF)

Product Details

Immunogen:	Recombinant fusion protein containing a sequence corresponding to amino acids 1-246 of human PSMA6 (NP_002782.1).
Sequence:	MSRGSSAGFD RHITIFSPEG RLYQVEYAFK AINQGGLTSV AVRKGDCAVI VTQKKVPDKL LDSSTVTHLF KITENIGCVM TGMTADSRSQ VQRARYEAAW WKYKYGYEIP VDMLCKRIAD ISQVYTQNAE MRPLGCCMIL IGIDEEQGPQ VYKCDPAGYY CGFKATAAGV KQTESTSFLE KKVKKKFDWT FEQTVETAIT CLSTVLSIDF KPSEIEVGW TVENPKFRIL TEAEIDAHLV ALAERD
Isotype:	IgG
Cross-Reactivity:	Human, Mouse, Rat
Characteristics:	Polyclonal Antibodies

Target Details

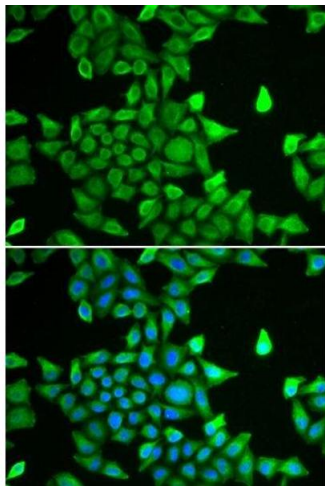
Target:	PSMA6
Alternative Name:	PSMA6 (PSMA6 Products)
Background:	<p>The proteasome is a multicatalytic proteinase complex with a highly ordered ring-shaped 20S core structure. The core structure is composed of 4 rings of 28 non-identical subunits, 2 rings are composed of 7 alpha subunits and 2 rings are composed of 7 beta subunits. Proteasomes are distributed throughout eukaryotic cells at a high concentration and cleave peptides in an ATP/ubiquitin-dependent process in a non-lysosomal pathway. An essential function of a modified proteasome, the immunoproteasome, is the processing of class I MHC peptides. This gene encodes a member of the peptidase T1A family, that is a 20S core alpha subunit. Multiple transcript variants encoding several different isoforms have been found for this gene. A pseudogene has been identified on the Y chromosome.,PSMA6,IOTA,PROS27,p27K,Cell Biology & Developmental Biology,Ubiquitin,PSMA6</p>
Molecular Weight:	18 kDa/25 kDa/27 kDa
Gene ID:	5687
UniProt:	P60900
Pathways:	Mitotic G1-G1/S Phases , DNA Replication , Synthesis of DNA

Application Details

Application Notes:	WB,1:500 - 1:2000,IF,1:50 - 1:200
Restrictions:	For Research Use only

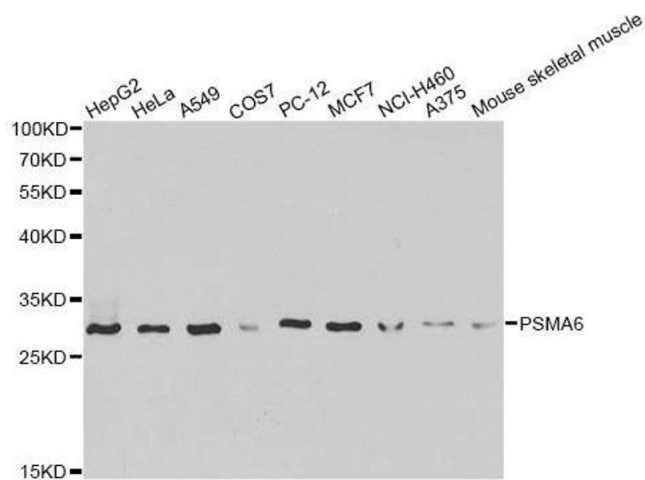
Handling

Format:	Liquid
Buffer:	PBS with 0.02 % sodium azide,50 % glycerol, pH 7.3.
Preservative:	Sodium azide
Precaution of Use:	This product contains Sodium azide: a POISONOUS AND HAZARDOUS SUBSTANCE which should be handled by trained staff only.
Storage:	-20 °C
Storage Comment:	Store at -20°C. Avoid freeze / thaw cycles.



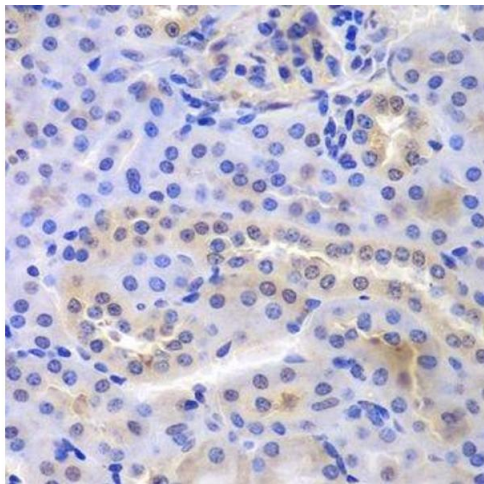
Immunofluorescence

Image 1. Immunofluorescence analysis of MCF-7 cells using PSMA6 antibody.



Western Blotting

Image 2. Western blot analysis of extracts of various cell lines, using PSMA6 antibody.



Immunohistochemistry (Paraffin-embedded Sections)

Image 3. Immunohistochemistry of paraffin-embedded mouse kidney using PSMA6 antibody.

Please check the [product details page](#) for more images. Overall 4 images are available for ABIN6146307.