

Datasheet for ABIN6146309
anti-PSMB1 antibody (AA 29-241)[Go to Product page](#)

7 Images

Overview

Quantity:	100 µL
Target:	PSMB1
Binding Specificity:	AA 29-241
Reactivity:	Human
Host:	Rabbit
Clonality:	Polyclonal
Conjugate:	This PSMB1 antibody is un-conjugated
Application:	Western Blotting (WB), Immunofluorescence (IF)

Product Details

Immunogen:	Recombinant fusion protein containing a sequence corresponding to amino acids 29-241 of human PSMB1 (NP_002784.1).
Sequence:	RFSPYVFNGG TILAIAGEDF AIVASDTRL S EGFSIHTRDS PKCYKLTDKT VIGCSGFHGD CLTLTKIIEA RLKMYKHSNN KAMTTGAIAA MLSTILYSRR FFPYYVYNII GGLDEEGKGA VYSFDPVGSY QRDSFKAGGS ASAMLQPLLD NQVGFKNMQN VEHVPLSLDR AMRLVKDVFI SAAERDVYTG DALRICIVTK EGIREETVSL RKD
Isotype:	IgG
Cross-Reactivity:	Human, Mouse, Rat
Characteristics:	Polyclonal Antibodies

Target Details

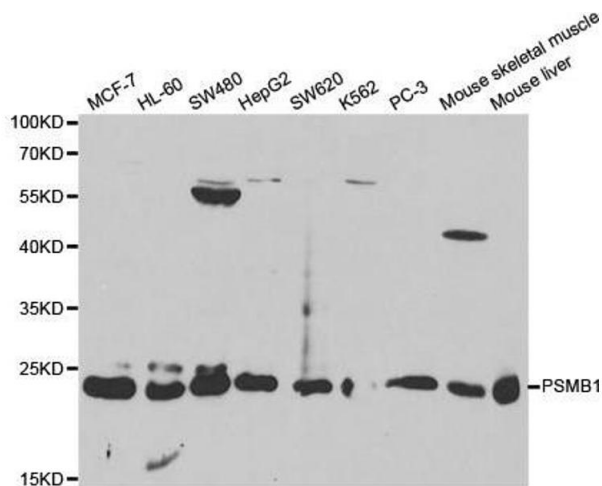
Target:	PSMB1
Alternative Name:	PSMB1 (PSMB1 Products)
Background:	<p>The proteasome is a multicatalytic proteinase complex with a highly ordered ring-shaped 20S core structure. The core structure is composed of 4 rings of 28 non-identical subunits, 2 rings are composed of 7 alpha subunits and 2 rings are composed of 7 beta subunits. Proteasomes are distributed throughout eukaryotic cells at a high concentration and cleave peptides in an ATP/ubiquitin-dependent process in a non-lysosomal pathway. An essential function of a modified proteasome, the immunoproteasome, is the processing of class I MHC peptides. This gene encodes a member of the proteasome B-type family, also known as the T1B family, that is a 20S core beta subunit. This gene is tightly linked to the TBP (TATA-binding protein) gene in human and in mouse, and is transcribed in the opposite orientation in both species.,PSMB1,HC5,PMSB1,PSC5,Cell Biology & Developmental Biology,Ubiquitin,PSMB1</p>
Molecular Weight:	26 kDa
Gene ID:	5689
UniProt:	P20618
Pathways:	Mitotic G1-G1/S Phases , DNA Replication , Synthesis of DNA

Application Details

Application Notes:	WB,1:500 - 1:2000,IF,1:50 - 1:200
Comment:	HIGH QUALITY
Restrictions:	For Research Use only

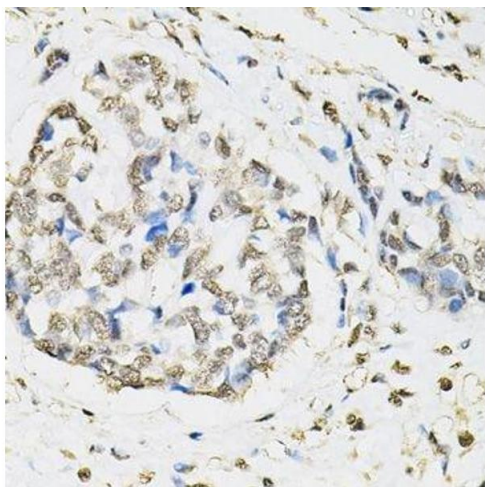
Handling

Format:	Liquid
Buffer:	PBS with 0.02 % sodium azide,50 % glycerol, pH 7.3.
Preservative:	Sodium azide
Precaution of Use:	This product contains Sodium azide: a POISONOUS AND HAZARDOUS SUBSTANCE which should be handled by trained staff only.
Storage:	-20 °C
Storage Comment:	Store at -20°C. Avoid freeze / thaw cycles.



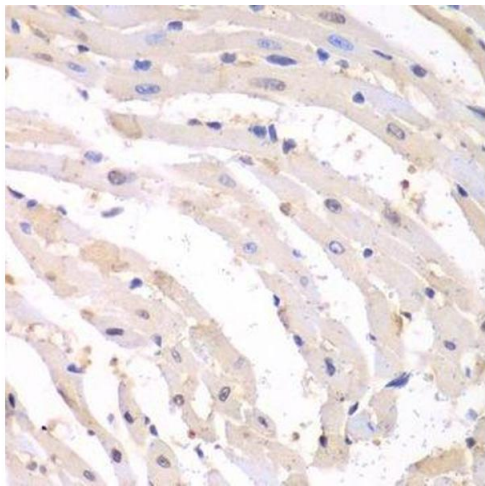
Western Blotting

Image 1. Western blot analysis of extracts of various cell lines, using PSMB1 antibody.



Immunohistochemistry (Paraffin-embedded Sections)

Image 2. Immunohistochemistry of paraffin-embedded human esophageal cancer using PSMB1 antibody.



Immunohistochemistry (Paraffin-embedded Sections)

Image 3. Immunohistochemistry of paraffin-embedded mouse heart using PSMB1 antibody.

Please check the [product details page](#) for more images. Overall 7 images are available for ABIN6146309.