

Datasheet for ABIN6146314
anti-PSMB2 antibody (AA 1-201)[Go to Product page](#)

4 Images

Overview

Quantity:	100 µL
Target:	PSMB2
Binding Specificity:	AA 1-201
Reactivity:	Human
Host:	Rabbit
Clonality:	Polyclonal
Conjugate:	This PSMB2 antibody is un-conjugated
Application:	Western Blotting (WB), Immunohistochemistry (IHC), Immunoprecipitation (IP)

Product Details

Immunogen:	Recombinant fusion protein containing a sequence corresponding to amino acids 1-201 of human PSMB2 (NP_002785.1).
Sequence:	MEYLIQIGQP DYVLVASDRV AASNIVQMKD DHDKMFKMSE KILLLCVGEA GDTVQFAEYI QKNVQLYKMR NGYELSPTAA ANFTRRLAD CLRSRTPYHV NLLAGYDEH EGPALYYMDY LAALAKAPFA AHGYGAFTL SILDRYYTPT ISRERAVELL RKCLEELQKR FILNLPTFSV RIIDKNGIHD LDNISFPKQG S
Isotype:	IgG
Cross-Reactivity:	Human, Mouse, Rat
Characteristics:	Polyclonal Antibodies

Target Details

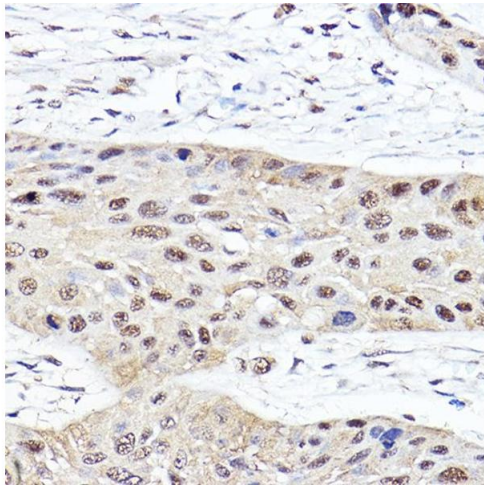
Target:	PSMB2
Alternative Name:	PSMB2 (PSMB2 Products)
Background:	<p>The proteasome is a multicatalytic proteinase complex with a highly ordered ring-shaped 20S core structure. The core structure is composed of 4 rings of 28 non-identical subunits, 2 rings are composed of 7 alpha subunits and 2 rings are composed of 7 beta subunits. Proteasomes are distributed throughout eukaryotic cells at a high concentration and cleave peptides in an ATP/ubiquitin-dependent process in a non-lysosomal pathway. An essential function of a modified proteasome, the immunoproteasome, is the processing of class I MHC peptides. This gene encodes a member of the proteasome B-type family, also known as the T1B family, that is a 20S core beta subunit. Multiple alternatively spliced transcript variants encoding distinct isoforms have been found for this gene.,PSMB2,HC7-I,Cell Biology & Developmental Biology,Ubiquitin,PSMB2</p>
Molecular Weight:	22 kDa
Gene ID:	5690
UniProt:	P49721
Pathways:	Mitotic G1-G1/S Phases , DNA Replication , Synthesis of DNA

Application Details

Application Notes:	WB,1:500 - 1:2000,IHC,1:50 - 1:200,IP,1:50 - 1:200
Comment:	HIGH QUALITY
Restrictions:	For Research Use only

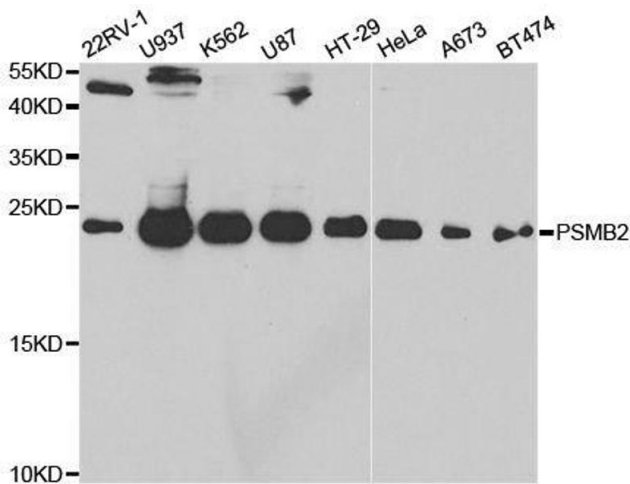
Handling

Format:	Liquid
Buffer:	PBS with 0.02 % sodium azide,50 % glycerol, pH 7.3.
Preservative:	Sodium azide
Precaution of Use:	This product contains Sodium azide: a POISONOUS AND HAZARDOUS SUBSTANCE which should be handled by trained staff only.
Storage:	-20 °C
Storage Comment:	Store at -20°C. Avoid freeze / thaw cycles.



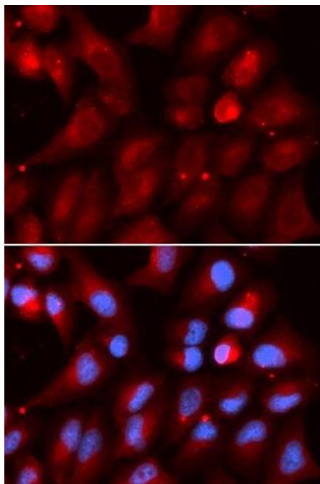
Immunohistochemistry

Image 1. Immunohistochemistry of paraffin-embedded human esophageal cancer using PSMB2 Rabbit pAb (ABIN6129442, ABIN6146314, ABIN6146316 and ABIN6221150) at dilution of 1:100 (40x lens). Perform high pressure antigen retrieval with 10 mM citrate buffer pH 6.0 before commencing with IHC staining protocol.



Western Blotting

Image 2. Western blot analysis of extracts of various cell lines, using PSMB2 antibody.



Immunofluorescence

Image 3. Immunofluorescence analysis of U2OS cells using PSMB2 antibody.

Please check the [product details page](#) for more images. Overall 4 images are available for ABIN6146314.