

Datasheet for ABIN6146328
anti-PSMC6 antibody (AA 20-150)

2 Images

[Go to Product page](#)

Overview

Quantity:	100 µL
Target:	PSMC6
Binding Specificity:	AA 20-150
Reactivity:	Human
Host:	Rabbit
Clonality:	Polyclonal
Conjugate:	This PSMC6 antibody is un-conjugated
Application:	Western Blotting (WB)

Product Details

Immunogen:	Recombinant fusion protein containing a sequence corresponding to amino acids 20-150 of human PSMC6 (NP_002797.3).
Sequence:	DKALQDYRKK LLEHKEIDGR LKELREQLKE LTKQYEKSEN DLKALQSVGQ IVGEVLKQLT EEKFIVKATN GPRYVVGCRRLQDKSKLKPG TRVALDMTTL TIMRYLPREV DPLVYNMSHE DPGNVSYSEI G
Isotype:	IgG
Cross-Reactivity:	Human, Mouse
Characteristics:	Polyclonal Antibodies

Target Details

Target:	PSMC6
---------	-------

Target Details

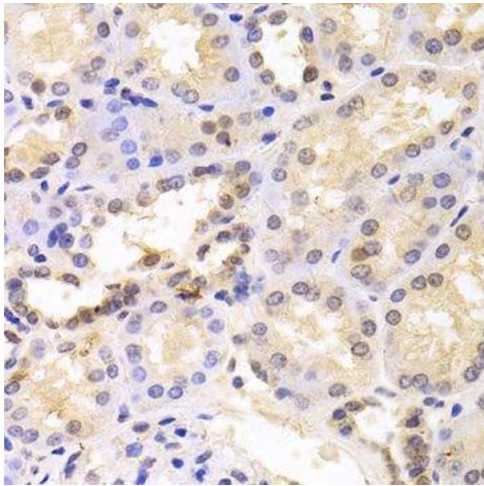
Alternative Name:	PSMC6 (PSMC6 Products)
Background:	<p>The 26S proteasome is a multicatalytic proteinase complex with a highly ordered structure composed of 2 complexes, a 20S core and a 19S regulator. The 20S core is composed of 4 rings of 28 non-identical subunits, 2 rings are composed of 7 alpha subunits and 2 rings are composed of 7 beta subunits. The 19S regulator is composed of a base, which contains 6 ATPase subunits and 2 non-ATPase subunits, and a lid, which contains up to 10 non-ATPase subunits. Proteasomes are distributed throughout eukaryotic cells at a high concentration and cleave peptides in an ATP/ubiquitin-dependent process in a non-lysosomal pathway. An essential function of a modified proteasome, the immunoproteasome, is the processing of class I MHC peptides. This gene encodes one of the ATPase subunits, a member of the triple-A family of ATPases which have a chaperone-like activity. Pseudogenes have been identified on chromosomes 8 and 12.,PSMC6,CADP44,HEL-S-73,P44,SUG2,p42,ATPase 6,Cell Biology & Developmental Biology,Ubiquitin,PSMC6</p>
Molecular Weight:	44 kDa
Gene ID:	5706
UniProt:	P62333
Pathways:	Mitotic G1-G1/S Phases , DNA Replication , Synthesis of DNA , Ubiquitin Proteasome Pathway

Application Details

Application Notes:	WB,1:500 - 1:2000
Comment:	HIGH QUALITY
Restrictions:	For Research Use only

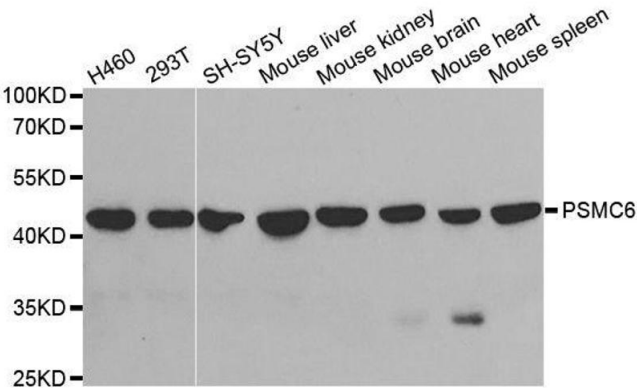
Handling

Format:	Liquid
Buffer:	PBS with 0.02 % sodium azide,50 % glycerol, pH 7.3.
Preservative:	Sodium azide
Precaution of Use:	This product contains Sodium azide: a POISONOUS AND HAZARDOUS SUBSTANCE which should be handled by trained staff only.
Storage:	-20 °C
Storage Comment:	Store at -20°C. Avoid freeze / thaw cycles.



Immunohistochemistry (Paraffin-embedded Sections)

Image 1. Immunohistochemistry of paraffin-embedded human kidney using PSMC6 antibody.



Western Blotting

Image 2. Western blot analysis of extracts of various cell lines, using PSMC6 antibody.