

Datasheet for ABIN6146359
anti-PSME4 antibody (AA 1634-1843)



[Go to Product page](#)

4 Images

Overview

Quantity:	100 µL
Target:	PSME4
Binding Specificity:	AA 1634-1843
Reactivity:	Human
Host:	Rabbit
Clonality:	Polyclonal
Conjugate:	This PSME4 antibody is un-conjugated
Application:	Western Blotting (WB), Immunohistochemistry (IHC)

Product Details

Immunogen:	Recombinant fusion protein containing a sequence corresponding to amino acids 1634-1843 of human PSME4 (NP_055429.2).
Sequence:	LYPHQVPLVL QVLKQTARSS SWHARYTVLT YLQTMVFYNL FIFLNNEAV KDIRWLVISL LEDEQLEVRE MAATTLGGLL QCNFLTMDSP MQIHFEQLCK TKLPKRRKRD PGVSGDTIPS AELVKRHAGV LGLGACVLSS PYDVPTWMPQ LLMNLSAHLN DPQPIEMTVK KTLNFRRTH HDNWQEHKQQ FTDDQLLVLT DLLVSPCYA
Isotype:	IgG
Cross-Reactivity:	Human, Mouse, Rat
Characteristics:	Polyclonal Antibodies

Target Details

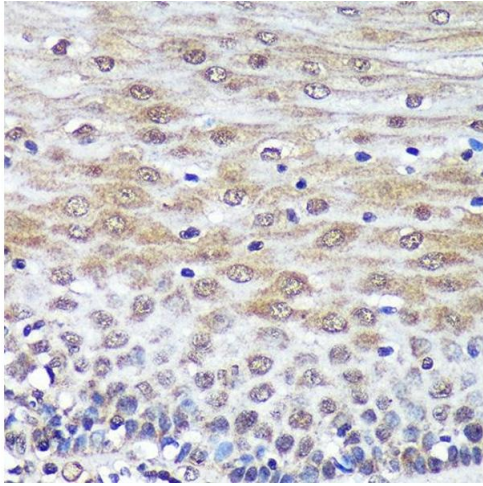
Target:	PSME4
Alternative Name:	PSME4 (PSME4 Products)
Background:	Associated component of the proteasome that specifically recognizes acetylated histones and promotes ATP- and ubiquitin-independent degradation of core histones during spermatogenesis and DNA damage response. Recognizes and binds acetylated histones via its bromodomain-like (BRDL region and activates the proteasome by opening the gated channel for substrate entry. Binds to the core proteasome via its C-terminus, which occupies the same binding sites as the proteasomal ATPases, opening the closed structure of the proteasome via an active gating mechanism. Component of the spermatoproteasome, a form of the proteasome specifically found in testis: binds to acetylated histones and promotes degradation of histones, thereby participating actively to the exchange of histones during spermatogenesis. Also involved in DNA damage response in somatic cells, by promoting degradation of histones following DNA double-strand breaks.,PSME4,PA200,Cell Biology & Developmental Biology,Ubiquitin,PSME4
Molecular Weight:	24 kDa/113 kDa/139 kDa/211 kDa
Gene ID:	23198
UniProt:	Q14997
Pathways:	DNA Replication , Synthesis of DNA

Application Details

Application Notes:	WB,1:500 - 1:2000,IHC,1:50 - 1:200
Restrictions:	For Research Use only

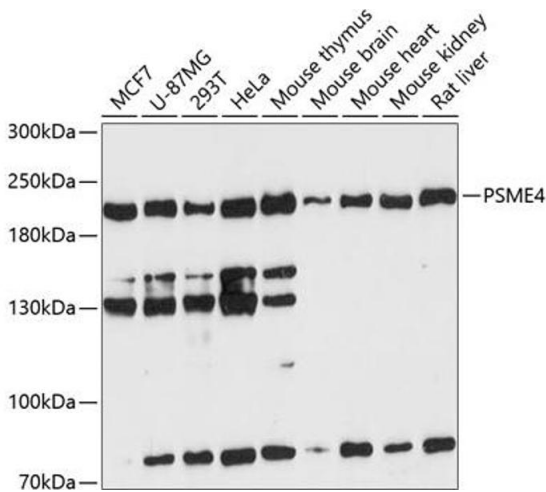
Handling

Format:	Liquid
Buffer:	PBS with 0.02 % sodium azide,50 % glycerol, pH 7.3.
Preservative:	Sodium azide
Precaution of Use:	This product contains Sodium azide: a POISONOUS AND HAZARDOUS SUBSTANCE which should be handled by trained staff only.
Storage:	-20 °C
Storage Comment:	Store at -20°C. Avoid freeze / thaw cycles.



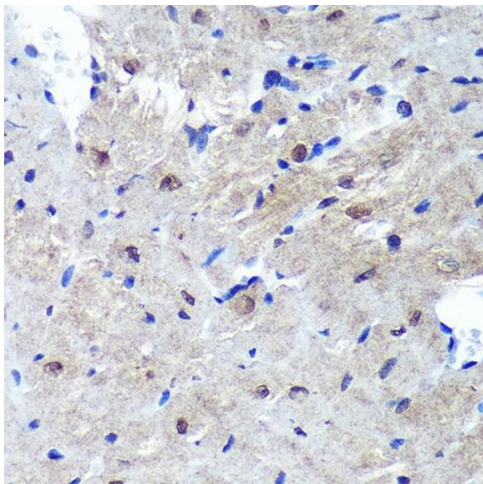
Immunohistochemistry

Image 1. Immunohistochemistry of paraffin-embedded Human esophageal using PSME4 Rabbit pAb at dilution of 1:100 (40x lens). Perform microwave antigen retrieval with 10 mM PBS buffer pH 7.2 before commencing with IHC staining protocol.



Western Blotting

Image 2. Western blot analysis of extracts of various cell lines, using PSME4 antibody at 1:3000 dilution. Secondary antibody: HRP Goat Anti-Rabbit IgG (H+L) (ABIN1684268 and ABIN3020597) at 1:10000 dilution. Lysates/proteins: 25 µg per lane. Blocking buffer: 3% nonfat dry milk in TBST. Detection: ECL Enhanced Kit (RM00021). Exposure time: 90s.



Immunohistochemistry

Image 3. Immunohistochemistry of paraffin-embedded Mouse heart using PSME4 Rabbit pAb at dilution of 1:100 (40x lens). Perform microwave antigen retrieval with 10 mM PBS buffer pH 7.2 before commencing with IHC staining protocol.

Please check the [product details page](#) for more images. Overall 4 images are available for ABIN6146359.