

Datasheet for ABIN6146363  
**anti-PSPC1 antibody (AA 1-70)**

## 5 Images

[Go to Product page](#)

## Overview

Quantity:	100 µL
Target:	PSPC1
Binding Specificity:	AA 1-70
Reactivity:	Human
Host:	Rabbit
Clonality:	Polyclonal
Conjugate:	This PSPC1 antibody is un-conjugated
Application:	Western Blotting (WB), Immunohistochemistry (IHC), Immunoprecipitation (IP)

## Product Details

Immunogen:	Recombinant fusion protein containing a sequence corresponding to amino acids 1-70 of human PSPC1 (NP_001035879.1).
Sequence:	MMLRGNLKQV RIEKNPARLR ALESAVGES PAAAAAMALA LAGEPAPPAP APPEDHPDEE MGFTIDIKSF
Isotype:	IgG
Cross-Reactivity:	Human, Mouse, Rat
Characteristics:	Polyclonal Antibodies

## Target Details

Target:	PSPC1
---------	-------

## Target Details

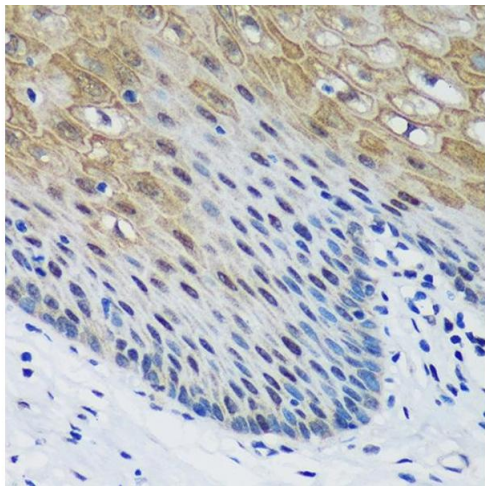
Alternative Name:	PSPC1 ( <a href="#">PSPC1 Products</a> )
Background:	<p>This gene encodes a nucleolar protein that localizes to punctate subnuclear structures that occur close to splicing speckles, known as paraspeckles. These paraspeckles are composed of RNA-protein structures that include a non-coding RNA, NEAT1/Men epsilon/beta, and the Drosophila Behavior Human Splicing family of proteins, which include the product of this gene and the P54NRB/NONO and PSF/SFPQ proteins. Paraspeckles may function in the control of gene expression via an RNA nuclear retention mechanism. The protein encoded by this gene is found in paraspeckles in transcriptionally active cells, but it localizes to unique cap structures at the nucleolar periphery when RNA polymerase II transcription is inhibited, or during telophase. Alternative splicing of this gene results in multiple transcript variants. A related pseudogene, which is also located on chromosome 13, has been identified.,PSPC1,PSP1,Epigenetics &amp; Nuclear Signaling,RNA Binding,PSPC1</p>
Molecular Weight:	45 kDa/58 kDa
Gene ID:	55269
UniProt:	<a href="#">Q8WXF1</a>

## Application Details

Application Notes:	WB,1:500 - 1:2000,IHC,1:50 - 1:200,IP,1:50 - 1:200
Restrictions:	For Research Use only

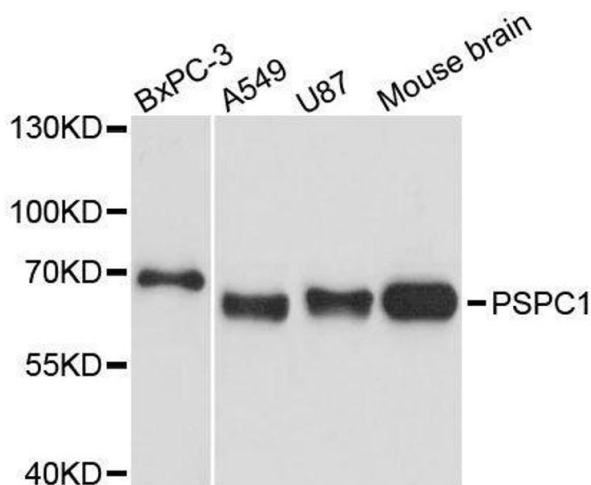
## Handling

Format:	Liquid
Buffer:	PBS with 0.02 % sodium azide,50 % glycerol, pH 7.3.
Preservative:	Sodium azide
Precaution of Use:	This product contains Sodium azide: a POISONOUS AND HAZARDOUS SUBSTANCE which should be handled by trained staff only.
Storage:	-20 °C
Storage Comment:	Store at -20°C. Avoid freeze / thaw cycles.



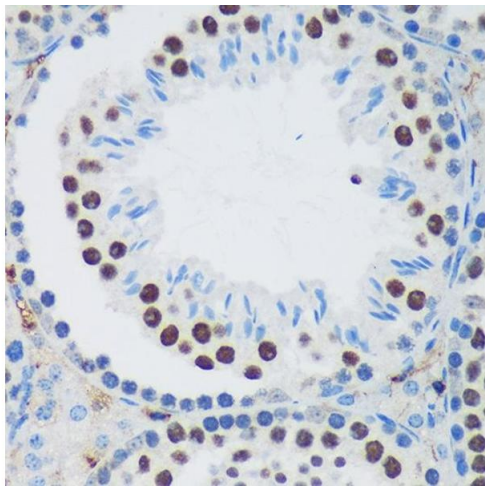
#### Immunohistochemistry

**Image 1.** Immunohistochemistry of paraffin-embedded Human esophageal using PSpC1 Rabbit pAb (ABIN6132925, ABIN6146363, ABIN6146364 and ABIN6224928) at dilution of 1:100 (40x lens). Perform microwave antigen retrieval with 10 mM PBS buffer pH 7.2 before commencing with IHC staining protocol.



#### Western Blotting

**Image 2.** Western blot analysis of extracts of various cell lines, using PSpC1 antibody.



#### Immunohistochemistry

**Image 3.** Immunohistochemistry of paraffin-embedded Mouse testis using PSpC1 Rabbit pAb (ABIN6132925, ABIN6146363, ABIN6146364 and ABIN6224928) at dilution of 1:100 (40x lens). Perform microwave antigen retrieval with 10 mM PBS buffer pH 7.2 before commencing with IHC staining protocol.

Please check the [product details page](#) for more images. Overall 5 images are available for ABIN6146363.