



[Go to Product page](#)

Datasheet for ABIN6146379
anti-PTCRA antibody (AA 172-281)

1 Image

Overview

Quantity:	100 µL
Target:	PTCRA
Binding Specificity:	AA 172-281
Reactivity:	Human
Host:	Rabbit
Clonality:	Polyclonal
Conjugate:	This PTCRA antibody is un-conjugated
Application:	Western Blotting (WB)

Product Details

Immunogen:	Recombinant fusion protein containing a sequence corresponding to amino acids 172-281 of human PTCRA (NP_612153.2).
Sequence:	LCDPAGPLPS PATTTRLRAL GSHRLHPATE TGGREATSSP RPQPRDRRWG DTPPGRKPGS PVWGECSYLS SYPTCPAQAW CSRSALRAPS SSLGAFFAGD LPPPLQAGAA
Isotype:	IgG
Cross-Reactivity:	Human
Characteristics:	Polyclonal Antibodies

Target Details

Target:	PTCRA
---------	-------

Target Details

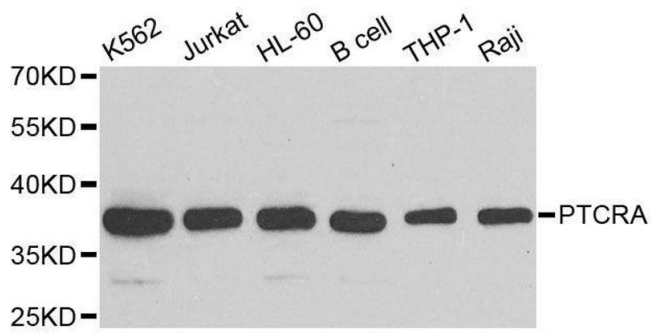
Alternative Name:	PTCRA (PTCRA Products)
Background:	The protein encoded by this gene is a single-pass type I membrane protein that is found in immature but not mature T-cells. Along with TCRB and CD3 complex, the encoded protein forms the pre-T-cell receptor complex, which regulates early T-cell development. Four transcript variants encoding different isoforms have been found for this gene.,PTCRA,PT-ALPHA,PTA,Stem Cells,Hematopoietic Progenitors,PTCRA
Molecular Weight:	18 kDa/26 kDa/29 kDa
Gene ID:	171558
UniProt:	Q6ISU1
Pathways:	Cancer Immune Checkpoints

Application Details

Application Notes:	WB,1:500 - 1:2000
Comment:	HIGH QUALITY
Restrictions:	For Research Use only

Handling

Format:	Liquid
Buffer:	PBS with 0.02 % sodium azide,50 % glycerol, pH 7.3.
Preservative:	Sodium azide
Precaution of Use:	This product contains Sodium azide: a POISONOUS AND HAZARDOUS SUBSTANCE which should be handled by trained staff only.
Storage:	-20 °C
Storage Comment:	Store at -20°C. Avoid freeze / thaw cycles.



Western Blotting

Image 1. Western blot analysis of extracts of various cell lines, using PTCRA antibody.