

Datasheet for ABIN6146408
anti-PTGES3 antibody (AA 1-100)



[Go to Product page](#)

1 Image

Overview

Quantity:	100 µL
Target:	PTGES3
Binding Specificity:	AA 1-100
Reactivity:	Human
Host:	Rabbit
Clonality:	Polyclonal
Conjugate:	This PTGES3 antibody is un-conjugated
Application:	Western Blotting (WB)

Product Details

Immunogen:	A synthetic peptide corresponding to a sequence within amino acids 1-100 of human P23/P23/PTGES3 (NP_006592.3).
Sequence:	MQPASAKWYD RRDYVFIEFC VEDSKDVNVN FEKSKLTFSC LGGSDNFKHL NEIDL FHCID PNDSKHKRTD RSILCCLRKG ESGQSWPRLT KERAKLNWLS
Isotype:	IgG
Cross-Reactivity:	Human, Mouse, Rat
Characteristics:	Polyclonal Antibodies

Target Details

Target:	PTGES3
---------	--------

Target Details

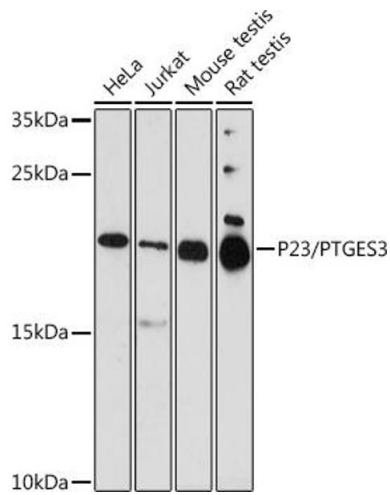
Alternative Name:	PTGES3 (PTGES3 Products)
Background:	<p>This gene encodes an enzyme that converts prostaglandin endoperoxide H2 (PGH2) to prostaglandin E2 (PGE2). This protein functions as a co-chaperone with heat shock protein 90 (HSP90), localizing to response elements in DNA and disrupting transcriptional activation complexes. Alternative splicing results in multiple transcript variants. There are multiple pseudogenes of this gene on several different chromosomes.,PTGES3,P23,TEBP,cPGES,Epigenetics & Nuclear Signaling,Cancer,Signal Transduction,Endocrine & Metabolism,Lipid Metabolism,PTGES3</p>
Molecular Weight:	14 kDa/16 kDa/18 kDa
Gene ID:	10728
UniProt:	Q15185
Pathways:	Intracellular Steroid Hormone Receptor Signaling Pathway , Cellular Glucan Metabolic Process

Application Details

Application Notes:	WB,1:500 - 1:2000
Restrictions:	For Research Use only

Handling

Format:	Liquid
Buffer:	PBS with 0.02 % sodium azide,50 % glycerol, pH 7.3.
Preservative:	Sodium azide
Precaution of Use:	This product contains Sodium azide: a POISONOUS AND HAZARDOUS SUBSTANCE which should be handled by trained staff only.
Storage:	-20 °C
Storage Comment:	Store at -20°C. Avoid freeze / thaw cycles.



Western Blotting

Image 1. Western blot analysis of extracts of various cell lines, using P23/P23/PTGES3 antibody at 1:1000 dilution. Secondary antibody: HRP Goat Anti-Rabbit IgG (H+L) (ABIN1684268 and ABIN3020597) at 1:10000 dilution. Lysates/proteins: 25 µg per lane. Blocking buffer: 3 % nonfat dry milk in TBST. Detection: ECL Enhanced Kit (RM00021). Exposure time: 90s.