

Datasheet for ABIN6146413
anti-PTGS1 antibody (AA 1-180)



[Go to Product page](#)

3 Images

Overview

Quantity:	100 µL
Target:	PTGS1
Binding Specificity:	AA 1-180
Reactivity:	Human
Host:	Rabbit
Clonality:	Polyclonal
Conjugate:	This PTGS1 antibody is un-conjugated
Application:	Western Blotting (WB), Immunohistochemistry (IHC), Immunofluorescence (IF)

Product Details

Immunogen:	Recombinant fusion protein containing a sequence corresponding to amino acids 1-180 of human COX1/COX1/PTGS1 (NP_001258094.1).
Sequence:	MLMRLVLTVR SNLIPSPPTY NSAHDYISWE SFSNVSYTR ILPSVPKDCP TPMGTKGKKQ LPDAQLLARR FLLRRKFIPD PQGTNLMFAF FAQHFTHQFF KTSGKMGPFG TKALGHGVDL GHIYGDNLER QYQLRLFKDG KLKYQVLDGE MYPPSVVEEAP VLMHYPRGIP PQSQMAVGQE
Isotype:	IgG
Cross-Reactivity:	Human, Mouse, Rat
Characteristics:	Polyclonal Antibodies

Target Details

Target:	PTGS1
---------	-------

Target Details

Alternative Name: PTGS1 ([PTGS1 Products](#))

Background: This is one of two genes encoding similar enzymes that catalyze the conversion of arachinodate to prostaglandin. The encoded protein regulates angiogenesis in endothelial cells, and is inhibited by nonsteroidal anti-inflammatory drugs such as aspirin. Based on its ability to function as both a cyclooxygenase and as a peroxidase, the encoded protein has been identified as a moonlighting protein. The protein may promote cell proliferation during tumor progression. Alternative splicing results in multiple transcript variants.,PTGS1,COX1,COX3,PCOX1,PES-1,PGG/HS,PGHS-1,PGHS1,PHS1,PTGHS,Cancer,Signal Transduction,Endocrine & Metabolism,Lipid Metabolism,Immunology & Inflammation,Cell Intrinsic Innate Immunity Signaling Pathway,Cardiovascular,Blood,Heart,Cardiovascular diseases,Heart disease,PTGS1

Molecular Weight: 56 kDa/61 kDa/64 kDa/68 kDa/71 kDa/72 kDa

Gene ID: 5742

UniProt: [P23219](#)

Application Details

Application Notes: WB,1:500 - 1:2000,IHC,1:100 - 1:200,IF,1:50 - 1:200

Comment: HIGH QUALITY

Restrictions: For Research Use only

Handling

Format: Liquid

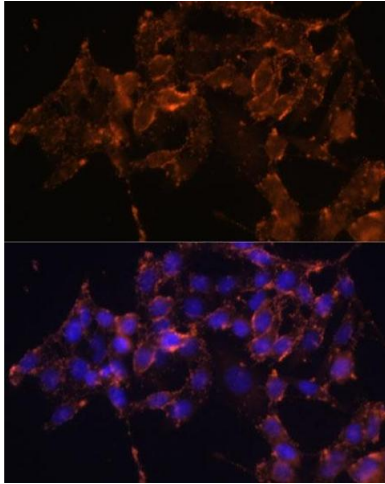
Buffer: PBS with 0.02 % sodium azide,50 % glycerol, pH 7.3.

Preservative: Sodium azide

Precaution of Use: This product contains Sodium azide: a POISONOUS AND HAZARDOUS SUBSTANCE which should be handled by trained staff only.

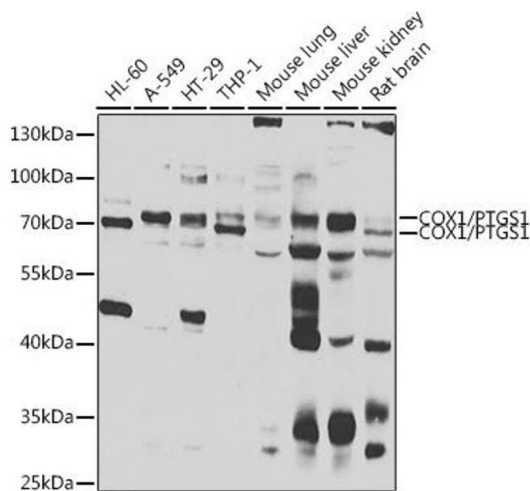
Storage: -20 °C

Storage Comment: Store at -20°C. Avoid freeze / thaw cycles.



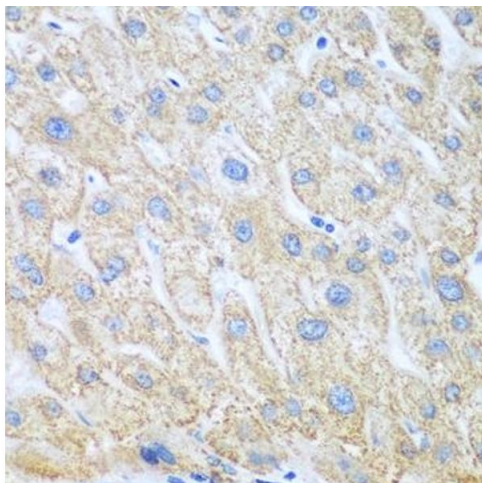
Immunofluorescence

Image 1. Immunofluorescence analysis of HeLa cells using COX1/COX1/PTGS1 Polyclonal Antibody (ABIN6130124, ABIN6146413, ABIN6146414 and ABIN6223187) at dilution of 1:100 (40x lens). Blue: DAPI for nuclear staining.



Western Blotting

Image 2. Western blot analysis of extracts of various cell lines, using COX1/COX1/PTGS1 antibody (ABIN6130124, ABIN6146413, ABIN6146414 and ABIN6223187) at 1:1000 dilution. Secondary antibody: HRP Goat Anti-Rabbit IgG (H+L) (ABIN1684268 and ABIN3020597) at 1:10000 dilution. Lysates/proteins: 25 µg per lane. Blocking buffer: 3 % nonfat dry milk in TBST. Detection: ECL Enhanced Kit (RM00021). Exposure time: 15s.



Immunohistochemistry

Image 3. Immunohistochemistry of paraffin-embedded human liver cancer using COX1/COX1/PTGS1 antibody (ABIN6130124, ABIN6146413, ABIN6146414 and ABIN6223187) at dilution of 1:100 (40x lens). Perform microwave antigen retrieval with 10 mM PBS buffer pH 7.2 before commencing with IHC staining protocol.