

Datasheet for ABIN6146418
anti-PTH antibody (AA 20-115)[Go to Product page](#)

1 Image

Overview

Quantity:	100 µL
Target:	PTH
Binding Specificity:	AA 20-115
Reactivity:	Human
Host:	Rabbit
Clonality:	Polyclonal
Conjugate:	This PTH antibody is un-conjugated
Application:	Western Blotting (WB)

Product Details

Immunogen:	Recombinant fusion protein containing a sequence corresponding to amino acids 20-115 of human Parathyroid Hormone (Parathyroid Hormone (PTH)) (NP_000306.1).
Sequence:	LTKSDGKSVK KRSVSEIQLM HNLGKHLNSM ERVEWLRKKL QDVHNFVALG APLAPRDAGS QRPRKKEDNV LVESHEKSLG EADKADVNVL TKAKSQ
Isotype:	IgG
Cross-Reactivity:	Human
Characteristics:	Polyclonal Antibodies

Target Details

Target:	PTH
---------	-----

Target Details

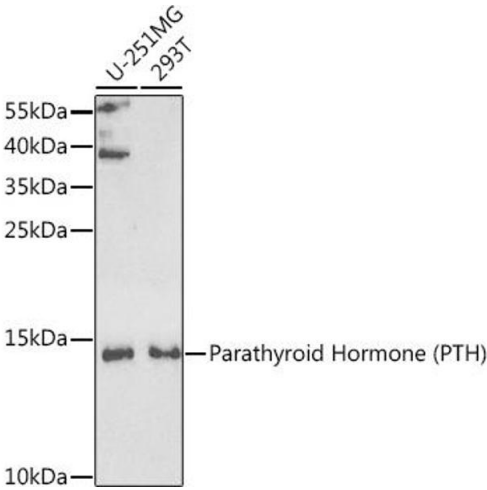
Alternative Name:	PTH (PTH Products)
Target Type:	Hormone
Background:	<p>This gene encodes a member of the parathyroid family of proteins. The encoded preproprotein is proteolytically processed to generate a protein that binds to the parathyroid hormone/parathyroid hormone-related peptide receptor and regulates blood calcium and phosphate levels. Excess production of the encoded protein, known as hyperparathyroidism, can result in hypercalcemia and kidney stones. On the other hand, defective processing of the encoded protein may lead to hypoparathyroidism, which can result in hypocalcemia and numbness. Alternative splicing results in multiple transcript variants.,PTH,PTH1,Signal Transduction,Cell Biology & Developmental Biology,Apoptosis,Growth factor,PTH</p>
Molecular Weight:	12 kDa
Gene ID:	5741
UniProt:	P01270
Pathways:	cAMP Metabolic Process , Regulation of Carbohydrate Metabolic Process

Application Details

Application Notes:	WB,1:500 - 1:2000
Restrictions:	For Research Use only

Handling

Format:	Liquid
Buffer:	PBS with 0.02 % sodium azide,50 % glycerol, pH 7.3.
Preservative:	Sodium azide
Precaution of Use:	This product contains Sodium azide: a POISONOUS AND HAZARDOUS SUBSTANCE which should be handled by trained staff only.
Storage:	-20 °C
Storage Comment:	Store at -20°C. Avoid freeze / thaw cycles.



Western Blotting

Image 1. Western blot analysis of extracts of various cell lines, using Parathyroid Hormone (Parathyroid Hormone (PTH)) antibody (ABIN6128520, ABIN6146418, ABIN6146419 and ABIN6221546) at 1:1000 dilution. Secondary antibody: HRP Goat Anti-Rabbit IgG (H+L) (ABIN1684268 and ABIN3020597) at 1:10000 dilution. Lysates/proteins: 25 µg per lane. Blocking buffer: 3 % nonfat dry milk in TBST. Detection: ECL Enhanced Kit (RM00021). Exposure time: 60s.